

Jean Hilton's Rainbow Gem #1[®] for Rainbow Gallery

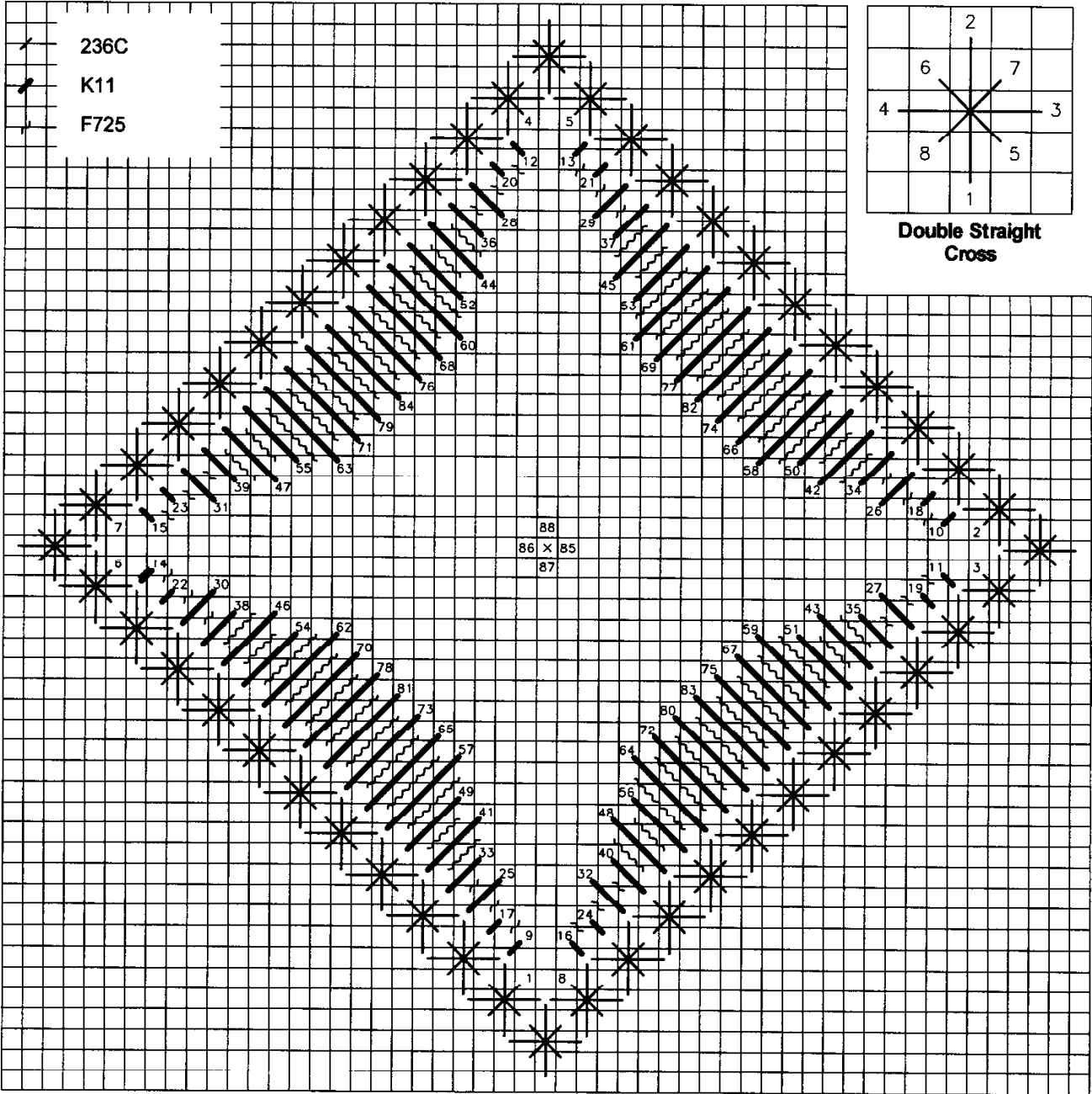
Finished Size: 52 threads (3") square or (4") diamond

Material List

7" x 7"—#18 Mono Canvas (Aquamarine)
Bars to fit; Tacks

#22 & #24 Needles

1 card each of the items listed in legend on back page



Photocopying of this design is invited.

Rainbow Gallery

7412 Fulton Ave., #5, North Hollywood, CA 91605

Production by Lightworks

Color and Stitching Suggestions

CANVAS—You may do each Gem on a separate canvas or you may do several on a larger piece. A 12" x 14" canvas is big enough for five or six designs, with 20 threads between each design.

THREADS—Many Rainbow Gallery threads are interchangeable. If the instructions call for Gold Rush 14[®], for instance, you may substitute Cresta d'Oro[®], Splendor[®] (3 or 4 ply), Flair[®], Pebbly Perle[®] (as it comes off the card, without plying each strand), Neon Rays[®] or Matte 18. Keep in mind the construction of the stitch; that is, whether it has several small stitches per unit as in a Double Straight Cross. Frosty Rays[®] will be too bulky for all the stitches on this small unit, but Flair[®] will work up nicely. Larger patterns, such as the Mistake Stitch on Gem #1 or the Star Stitch on Gem #2, will be lovely in just about anything. Just take care to keep the threads in proportion to each other so one doesn't overpower its neighbor. To ply Splendor[®], first note that it has three bundles. Pull out a bundle and then ply it. Each design takes a minimal amount of yardage. One card may be used to do several different designs.

COLORS—You may use any color you want, including the canvas color.

FINISHING—Try the Gems as Christmas ornaments, a pocket patch, a pendant with a tassel or a tiny pillow insert for a chair.

1. Slightly enlarge the center hole, then count down 26 threads. This is where you will begin the diamond outline of Double Straight Crosses in Color #1 with a #22 needle. See count in diagram at upper right corner of Master Chart.
2. Begin the Mistake Stitch with a long length of Color #2. See count on Master Chart. All stitches go over all previous ones except for the last stitch of each row which slides under the first stitch of that row only. Therefore, 8 goes under 1-2, 16 goes under 9-10, etc. There are many ways you can use colors in a Mistake Stitch. My version is 1-32 with Color #2, then one row 33-40 with Color #1, 41-72 with Color #3, ending with Color #4 in the middle. **You will do the Center Cross Stitch 85-86 and 87-88 only when you have round thread in the center.** A round thread is Gold Rush, Cresta d'Oro, etc. A flat thread such as Neon Rays or Flair does not need to be secured with a Cross Stitch in the middle.

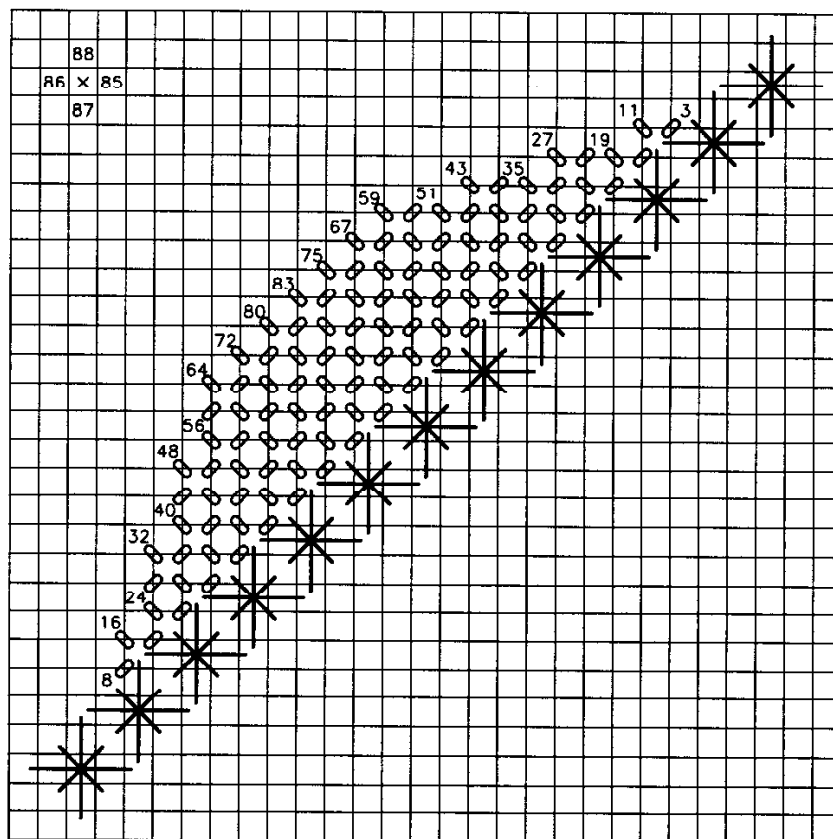


Diagram #1—Alternate Background

3. Two background patterns may be used with Gem #1. The Master Chart show diagonal lines with Color #5 and two ply of Color #6. See Diagram #1 for background of Four-Way Continental over one intersection in Color #6.

Designer's Note: This little diamond stitches up very quickly. It makes a splendid Christmas ornament. Several of them, some in Christmas colors and some in other colors, hang on our tree every year. If you want to shrink the size, simply eliminate one or two Double Straight Crosses and still follow the numbers of the Mistake Stitch. You will have fewer rows of color when you make the diamond smaller.



1. Variegated Gold Rush 14[®] 236C
Dark Blue Mix
5. 24 Karats[®] K11-Purple
6. Fiesta! F725-Tan
2. Fyre Werks[®] F37-Aqua
3. Flair[®] F547-Pale Aqua
4. Variegated Gold Rush 14[®] 208C
Jade Multi