

Jean Hilton's Rainbow Gem #2[®] for Rainbow Gallery

Finished Size: 56 threads (3" square or (4.5" diamond

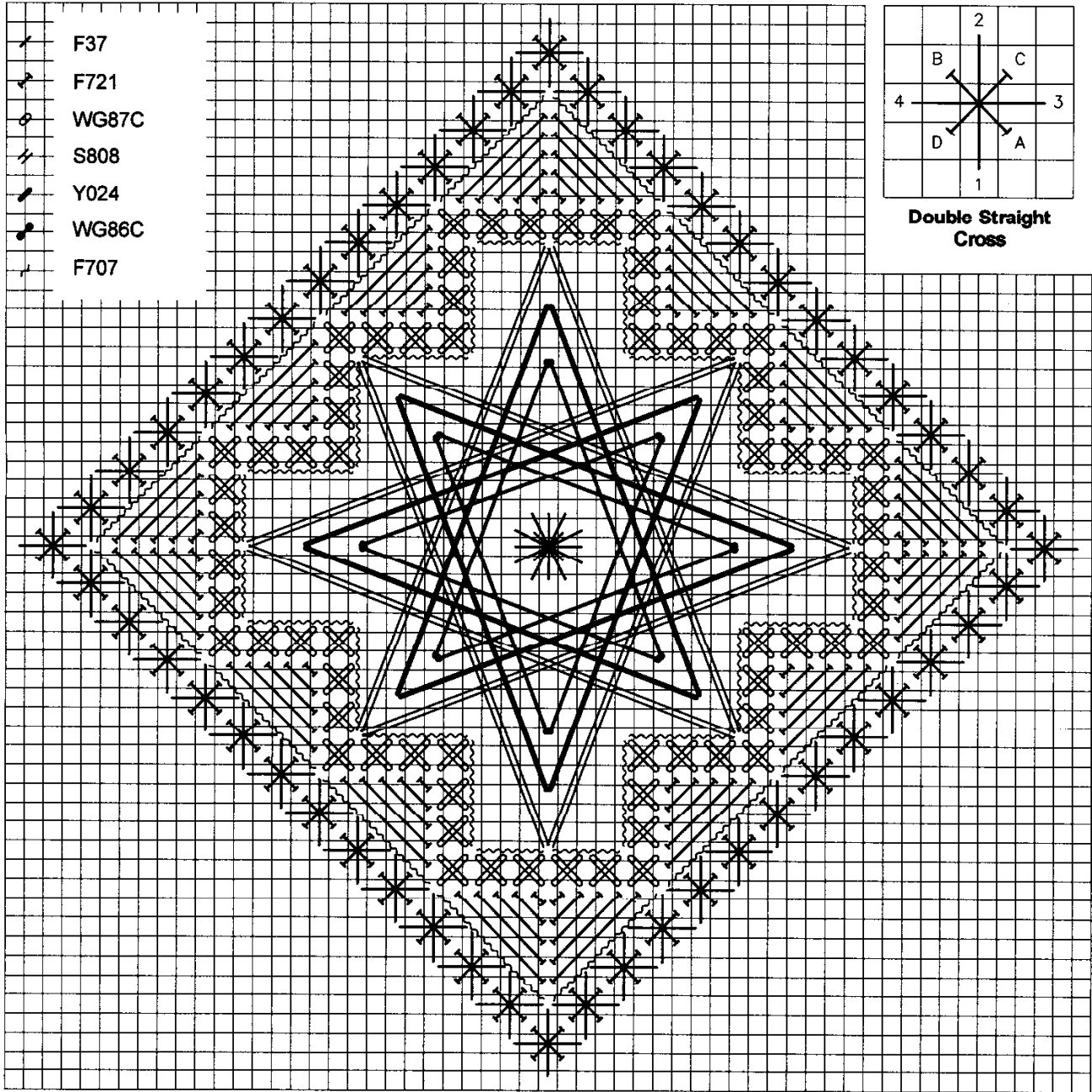
Material List

7" x 7"—#18 Mono Canvas (Aquamarine)

Bars to fit; Tacks

#22 & #24 Needles

1 card each of the items listed in legend on back page



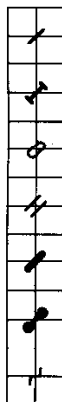
Photocopying of this design is invited.

Rainbow Gallery

7412 Fulton Ave., #5, North Hollywood, CA 91605

Production by Lightworks

1. Slightly enlarge the center hole, then count down 28 threads. This is where you will begin the diamond outline. Use Color #1 with a #22 needle to set up the diamond outline by doing the **straight stitches only** of the Double Straight Crosses. Place diagonal crosses over the top with 2 ply Color #2. See count in diagram at upper right corner of Master Chart.
2. Do the Cross Stitches in the center with Color #3. Be sure to do these all the way around before doing the Star Motif because the Star threads anchor in these crosses.
3. The first (outer) layer of the Star is with 4 ply Color #4. Lay these stitches carefully. See Diagram #1 for count. The second layer is with Color #5. Follow the same numbering but go in three threads on the straight sides and two intersections on the diagonal sides. The final layer is with Color #6. Finish the center with a Rhodes or Jessica with Smyrna Cross in Color #1. See Diagrams 2, 3 and 4.
4. Lay the partial Scotch Stitches by the diamond outline with 3 ply Color #2. Do the five shortest stitches only, leaving the longest stitch for the next step.
5. Backstitch around the diamond, where you omitted the longest stitch of the partial Scotch Stitch with 2 ply Color #7.
6. Finish the center by backstitching on the inner side of the Cross Stitches with 1 ply Color #7.
Always try to poke **down** into the holes where the Star Stitches share.



1. Fyre Werks® F37
Aqua
2. Fiesta! F721
Teal
3. Gold Rush 14® WG87C
Aqua
4. Splendor® S808
Medium Purple
5. Frosty Rays® Y024
Turquoise Gloss
6. Gold Rush 14® WG86C
Lilac
7. Fiesta! F707
Deep Violet

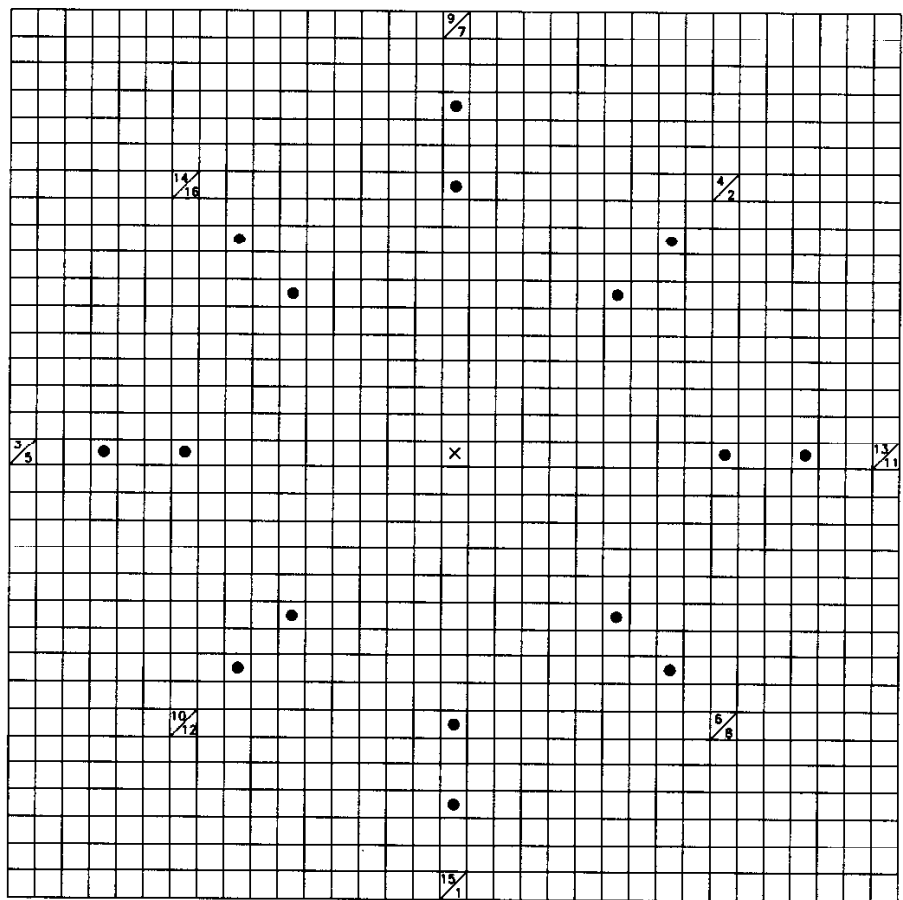


Diagram #1—Star Stitch

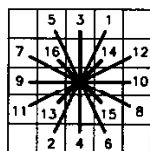


Diagram #2
Rhodes

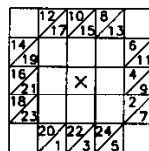


Diagram #3
Jessica



Diagram #4
Smyrna