

Jean Hilton's Rainbow Gem #3[®] for Rainbow Gallery

Finished Size: 56 threads (3") square or (4.5") diamond

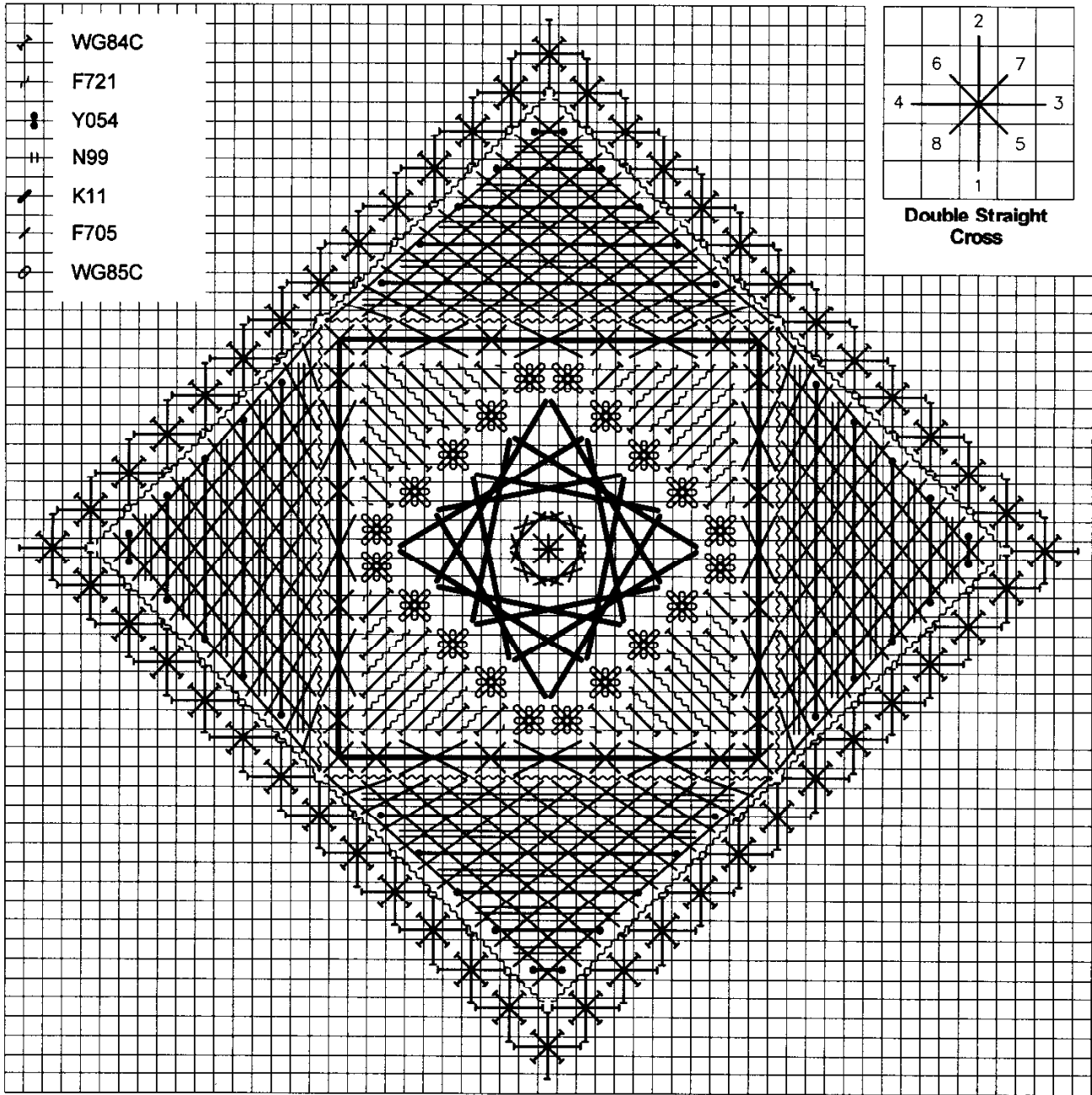
Material List

7" x 7"—#18 Mono Canvas (Aquamarine)

Bars to fit; Tacks

#22 & #24 Needles

1 card each of the items listed in legend on back page



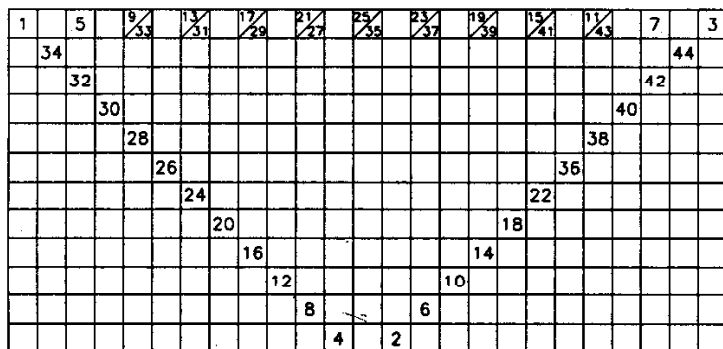
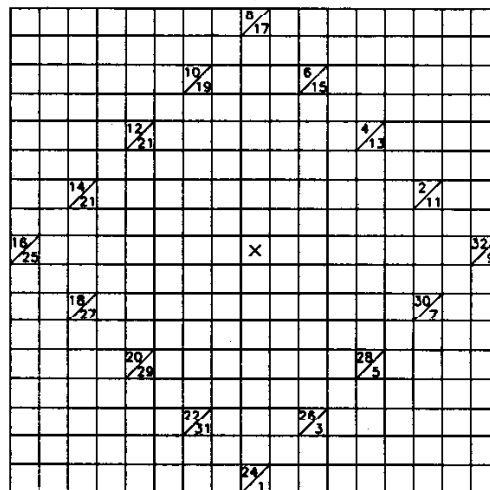
Photocopying of this design is invited.

Rainbow Gallery

7412 Fulton Ave., #5, North Hollywood, CA 91605

Production by Lightworks

1. Slightly enlarge the center hole, then count down 28 threads. This is where you will begin the diamond outline of Double Straight Crosses in Color #1 with a #22 needle. See count in diagram at upper right corner of Master Chart.
2. Set up the inside square ply placing four long stitches one intersection away from the outline using Color #5. Cross Stitch over the long lines with 2 ply Color #6.
3. Do the Smyrna Crosses in the center square with Color #7. See Diagram #1 for count.
4. The diamond Jessica is in Color #5. See Diagram #2 for count. Use two ply Color #6 for the inner small Jessica. Finish this Jessica with a Smyrna Cross in the center. See Diagram #3.
5. Follow Master Chart and legend to fill in the corners of the center square with Color #1 and Color #2.
6. Optional—The padding in the triangles has two colors: Color #3 and Color #4. Follow Master Chart and legend. Notice that these stitches **do not** share with the outline stitches.
7. Finish the triangles with a Sprat's Head in 1 ply Color #6. See Diagram #4. Use a firm tension so these stitches won't pop up. Remember that all stitches go **over** all previous ones. **The Sprat's Head pattern will be very lacy if you eliminate the padding.*
8. Use 1 ply of Color #2 to do long stitches outlining the triangles. Go from one diamond point to the middle of that side, then across the top and back down to the diamond point.



1. Gold Rush 14® WG84C-Deep Blue
2. Fiesta! F721-Teal
3. Frosty Rays® Y054-Dark Periwinkle Gloss
4. Neon Rays® N99-Deep Violet
5. 24 Karats® K11-Purple
6. Fiesta! F705-Lilac
7. Gold Rush 14® WG85C-Deep Purple