

Jean Hilton's Rainbow Gem #4[©] for Rainbow Gallery

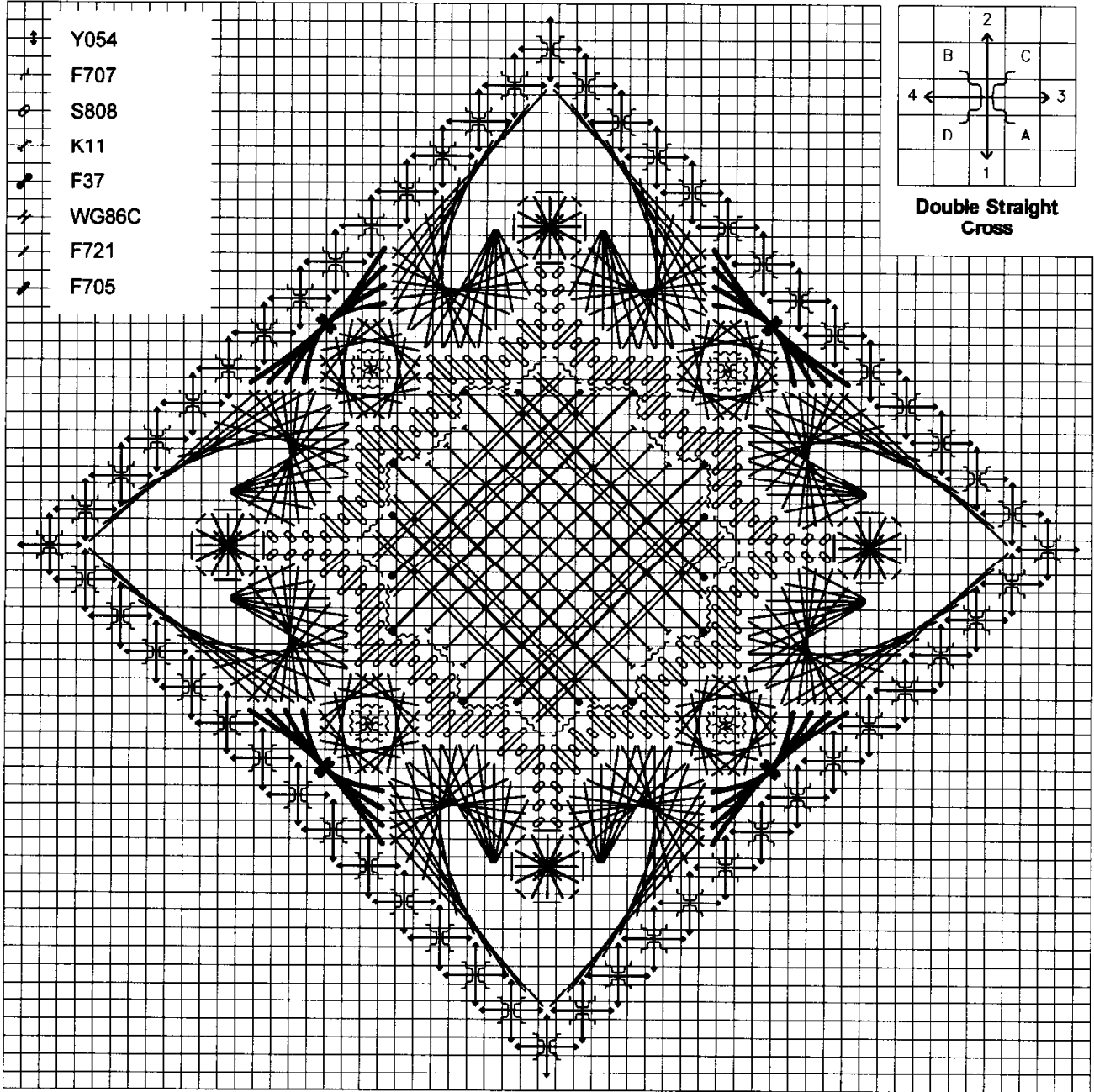
Finished Size: 60 threads (3.5") square or (4.75") diamond

Material List

7" x 7" — #18 Mono Canvas (Aquamarine)
Bars to fit; Tacks

#22 & #24 Needles

1 card each of the items listed in legend on back page



Photocopying of this design is invited.

Rainbow Gallery

7412 Fulton Ave., #5, North Hollywood, CA 91605

Production by Lightworks

- Slightly enlarge the center hole, then count down 30 threads. This is where you will begin the diamond outline. Use Color #1 with a #22 needle to set up the diamond outline by doing the **straight stitches only** of the Double Straight Crosses. Place diagonal crosses over the top with 2 ply Color #2. See count in diagram at upper right corner of Master Chart.
- Use 4 ply of Color #3 to work the Gobelin Stitches and Tent Stitches around the center.
- The center Waffle Stitch numbering is unusual so you won't start and end the threads in the same place. See Diagram #1 for count. Begin with Color #4 at the #1 at the middle lower right and end at #12. Use Color #5 for the second layer, beginning at **uncircled A** in the lower left corner. Color #6 starts at the **circled A** at the upper right, next to **uncircled M**. Outline Waffle Stitch with 1 ply Color #2. See Master Chart for placement.
- See Diagram #2 for the Fleur-de-Lis Crescent numbering. Use 1 ply Color #7 and hold each stitch in place so it won't pop up. All stitches go over all previous stitches. After 19-20 you come up at 2 and go down at 22, 4 to 24, 6 to 26, 8 to 28, 10 to 30, 12 to 32. Continue on with all subsequent stitches going down in #32 with 24-32 as the last stitch.
- Place a Rhodes stitch between the Crescents, again with 1 ply Color #7. See Diagram #3 for count. Outline with same 1 ply of Color #7.
- There is a Jessica between the Crescents, also in 1 ply Color #7. See Diagram #4 for count. The outlined Smyrna Cross inside the Jessica may be done with 2 ply of Color #2 or try this—unravel a length of Color #4 and do the Smyrna with the unchained thread. You must hold the thread straight while stitching so it won't get tangled.
- Finish the sides by the Jessicas with a Sheaf Stitch in 1 ply of Color #8. See Diagram #5 for count. Stitch the 9-10 belt twice.

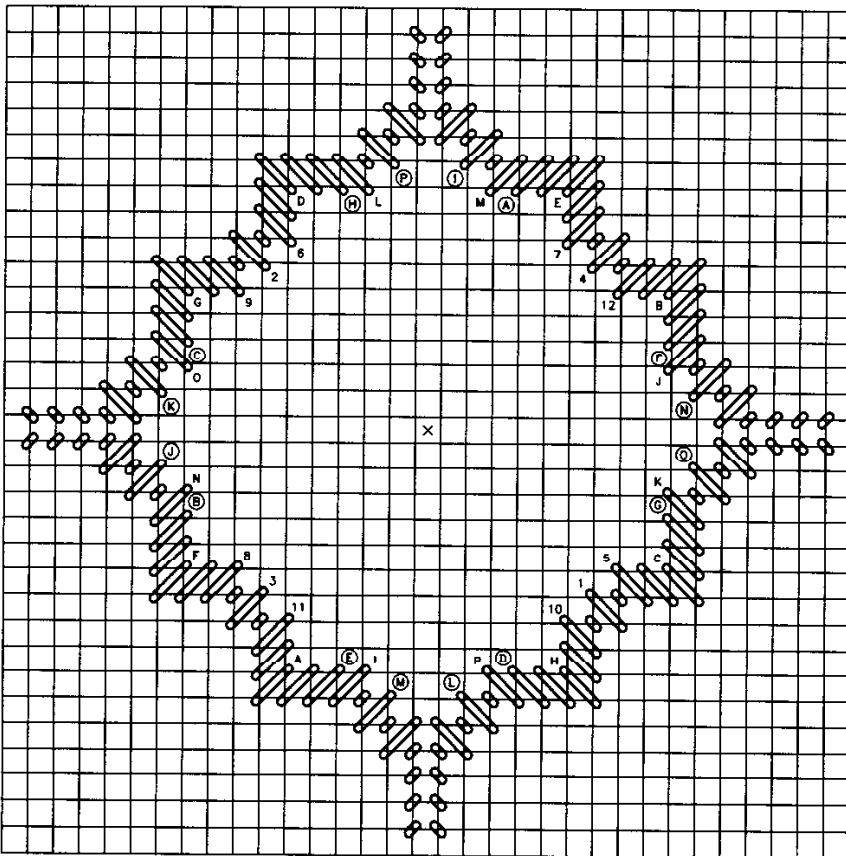


Diagram #1—Waffle Stitch

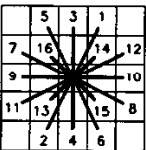


Diagram #3
Rhodes



Diagram #4a
Smyrna

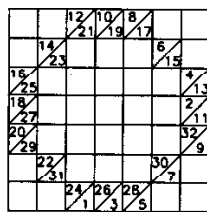


Diagram #4
Jessica

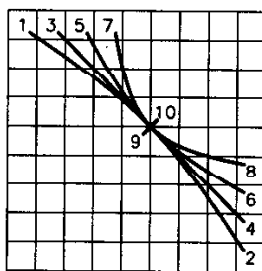


Diagram #5—Sheaf Stitch

			18	16	14	12	
		20					10
	22						8
24							6
26							4
28							2
	30						19
		32					17
						15	
						13	
						11	
						9	
						7	
						5	
						3	
1							

Diagram #2
Fleur-de-Lis Crescent



- Frosty Rays® Y054
Dark Periwinkle Gloss
- Fiesta! F707
Deep Violet
- Splendor® S808
Medium Purple
- 24 Karats® K11
Purple
- Fyre Werks® F37
Aqua
- Gold Rush 14® WG86C
Lilac
- Fiesta! F721
Teal
- Fiesta! F705
Lilac