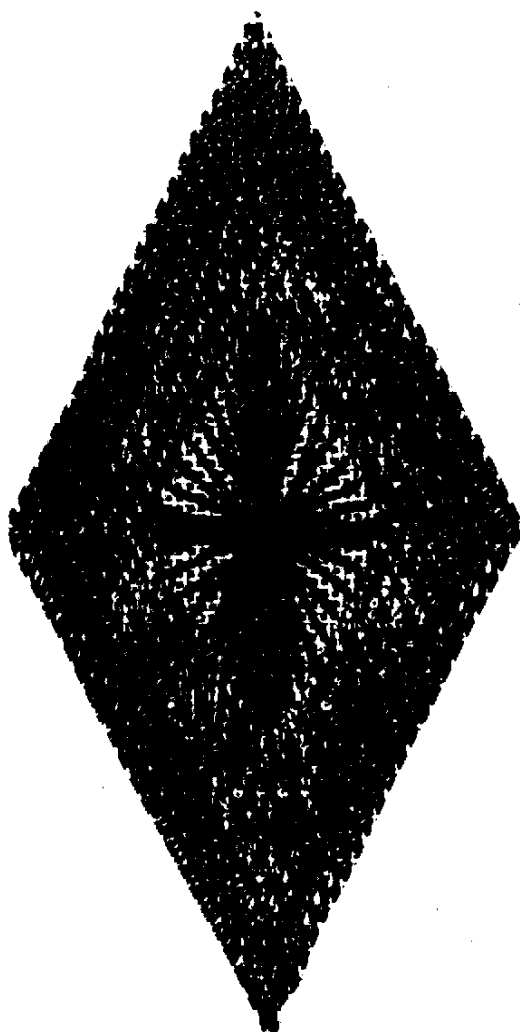


# RALEIGH DIAMOND<sup>©1991</sup>

A Joan Lohr Design for Rainbow Gallery



6" x 8"—#18 Mono Canvas (white or colored)  
(Finished size 2½" x 5")

1 Card Overture™ —V63 (Forest)  
1 Card Patina™ —PA32 (Renaissance Green)  
1 Card Tiara—T114 (Dark Green)

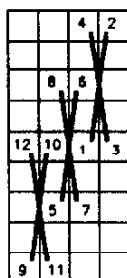
### Alternate Color Schemes:

1 Card Overture™ —V24 (Reds)  
1 Card Patina™ —PA09 (Real Red)  
1 Card Tiara—T115 (Red)

1 Card Overture™ —V32 (Taos)  
1 Card Patina™ —PA28 (Mauve)  
1 Card Tiara—T101 (Pale Gold)

1 Card Overture™ —V30 (Sahara)  
1 Card Patina™ —PA10 (Chalk White)  
1 Card Tiara—T101 (Pale Gold)

Or pick your own.



**STAGGERED OBLONG  
CROSS**



**MODIFIED PARIS  
STITCH**

- TRIPLE BORDER**—Begin at top of diamond with outer row of Staggered Oblong Cross using Patina (heavy lines on chart). Next row is stitched using Tiara (light lines). Inner row of border is also done with Patina.
- MODIFIED PARIS STITCH**—One ply Overture is used as a filler between the Triple Border and Rhodes Knot. Start at top. After filling diamond points, work in a three stitch wide band (see Master Chart).
- IRREGULAR RHODES KNOT**—Fill in remaining area using Tiara. It is important to follow number sequence for this stitch shown on chart (back page).

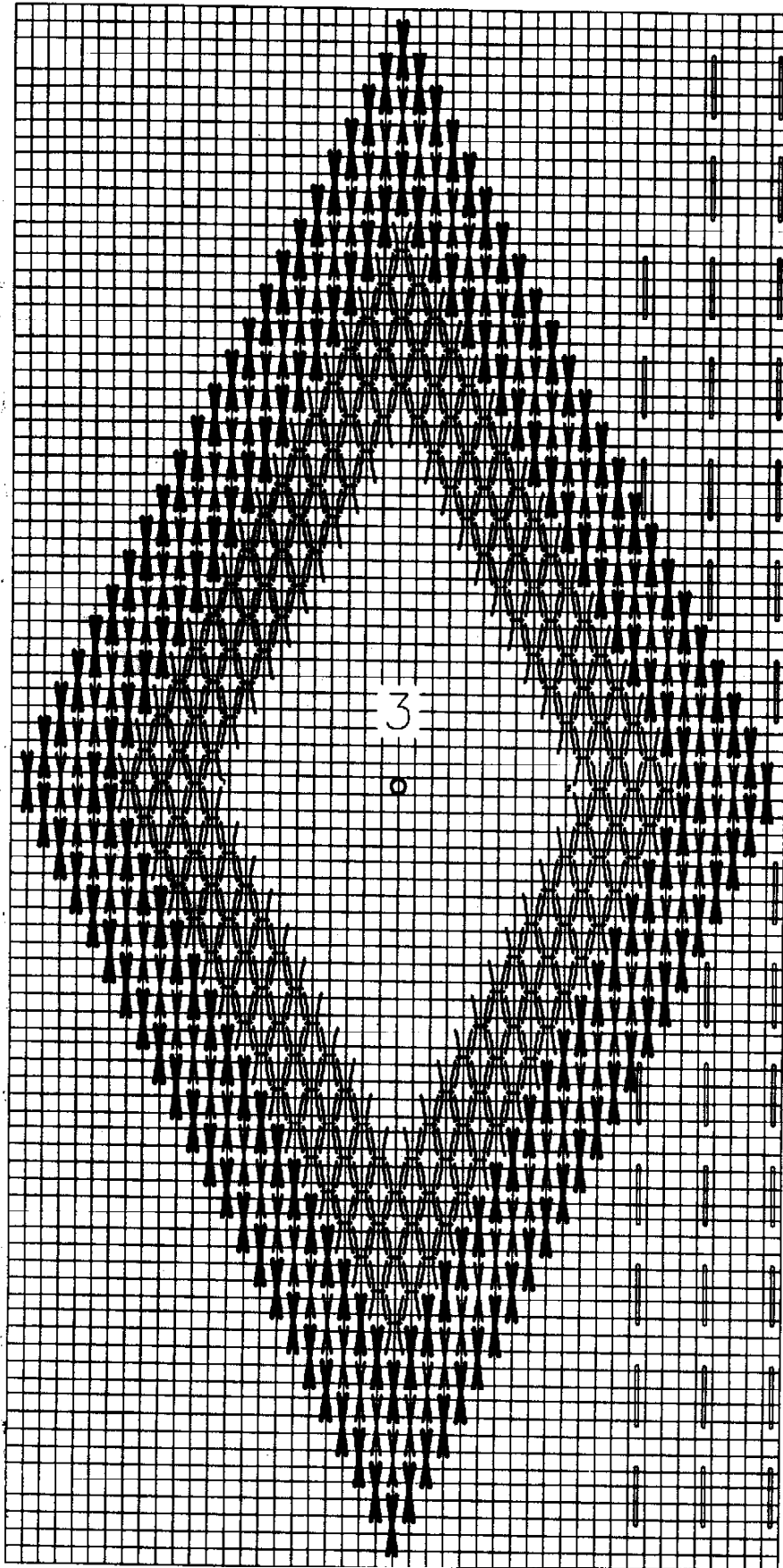
**NOTE:** For a different effect, work Paris Stitch with Patina, Rhodes Knot and center of Triple Border with Overture and outer rows of border in Tiara or Cresta d'Oro. May be finished as an ornament.

To change the diamond shape into a rectangle, add darning stitch (over 4 threads, under 2) as shown by ovals on Master Chart. Extend design size using 1 ply Overture manipulating colors for desired effect.

Permission granted for shop owners and guilds to copy. ©1991 Rainbow Gallery

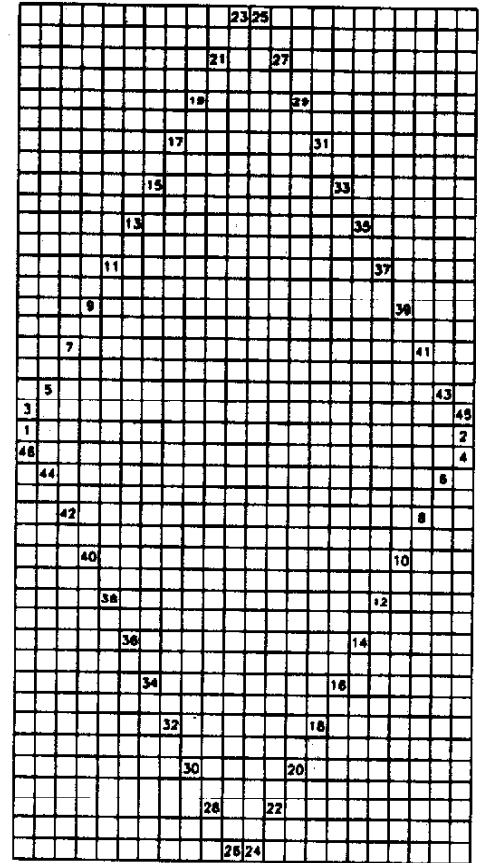
Production by Lightworks

**MASTER CHART**



**RALEIGH DIAMOND ©1991**

**A Joan Lohr Design  
for  
Rainbow Gallery**



**IRREGULAR  
RHODES KNOT**

**Permission granted for shop  
owners and guilds to copy.  
©1991 Rainbow Gallery**

**Production by Lightworks  
(714) 892-9124**