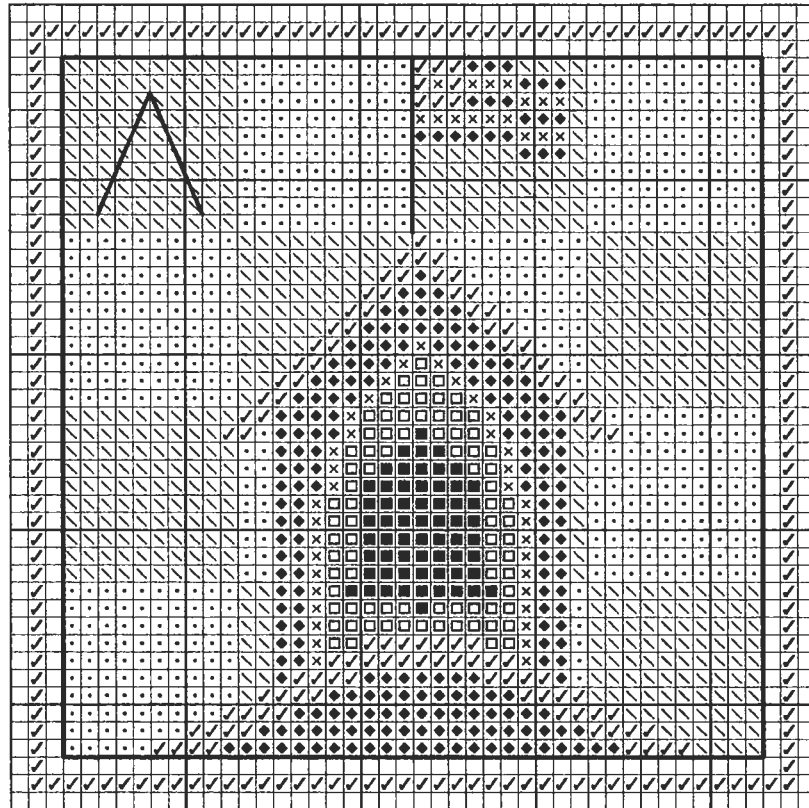


## SEPTEMBER - SCHOOLHOUSE

Stitch count: 44h x 44w – approx. 3”h x 3”w ♥ 28ct Cappuccino Country French linen from Wichelt (#86-265) stitched over two.  
or 14ct Cappuccino Country French Soft Touch Aida (#367-265)



### Rainbow Gallery Fibers - 1 card each

- |  |   |
|--|---|
| x E899 Elegance™ Dark Ecru – 1 strand      | ✓ RT69 Rainbow Tweed Slate Blue – 1 ply |
| ■ H630 Hi-Lights Antique Gold – 1 strand   | • S906 Splendor® Med. Pistachio – 2 ply |
| ◆ M810 Mandarin Floss Cranberry – 2 ply    | ∖ S958 Splendor® Pistachio – 2 ply      |
| □ P47 Pebbly Perle® Dark Chocolate – 1 ply |   |

After completing all cross stitches, back stitch with 1 strand Ecru Elegance™ around the edge of the main design area as indicated by the solid line on the chart. Make a long stitch with 2 ply of Dark Chocolate Pebbly Perle® for the flag pole. We attached the "A+" charm in the top left square of the background with Pistachio Splendor®. (*charm #15042BR from By Jupiter!*)

Go to [www.ericamichaels.com](http://www.ericamichaels.com) for

**ERICA MICHAELS**  
DESIGNS FOR COUNTED CROSS STITCH

more designs by Linda Stolz

See many more of our designs and  
learn more about our products at  
[www.rainbowgallery.com](http://www.rainbowgallery.com)

Model framed by *Homespun Corner, Clarksville TN* with *Wood 'N Needle Crafts #FF HG LL (Holiday Green)*

**Come back for next month's design!**