

SHIMMERING BELLS ^{©1999}

A Toini Figgins Design for Rainbow Gallery

MATERIALS: (finished size: 4" x 4")

	PICTURED	ALTERNATE 1	ALTERNATE 2	ALTERNATE 3
Neon Rays® (2 cards)	N02-White	N38-Emerald	N07-Lavender	N55-True Blue
Fyre Werks® (1 card)	F2-Gold	F38-Red	F43-Purple	F9C-Copper
Canvas 18 Ct.	Victorian Blue	White	Pink	Light Blue

NOTE: Always lay stitches worked with Neon Rays and Fyre Werks.

- Using Neon Rays, work the numbered stitches of a Tied Windmill in the center. Do not end off—come up at arrow on Waste Chart. See Diagram #1.
- Work the body of the bell in Plaited Stitch using Neon Rays. Skip 2 canvas threads for the band. Note compensating stitches. See Diagram #2. Stitch other three bells the same way. Use a waste knot and rotate the canvas for each bell.
- With Fyre Werks, work the lettered stitches of the center Tied Windmill. See Diagram #1. Work the Upright Cross at the top of the bell. See Diagram #3. Repeat for other three bells, rotating the canvas so that 1-2 stitch is vertical for each bell. Tuck Fyre Werks behind the center when going from one bell to the next so the thread does not show through the canvas.
- The band of each bell is Smyrna Crosses in Fyre Werks. See Diagram #4. The clapper is straight stitches in Fyre Werks.
- Use Neon Rays for the vertical and horizontal stitches of the corner motifs. The diagonal stitches are Fyre Werks.

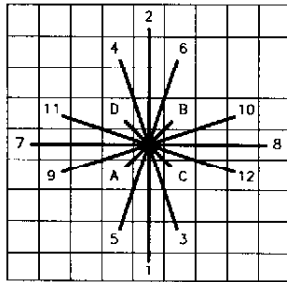


Diagram #1

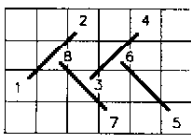
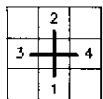
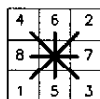


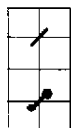
Diagram #2



#3

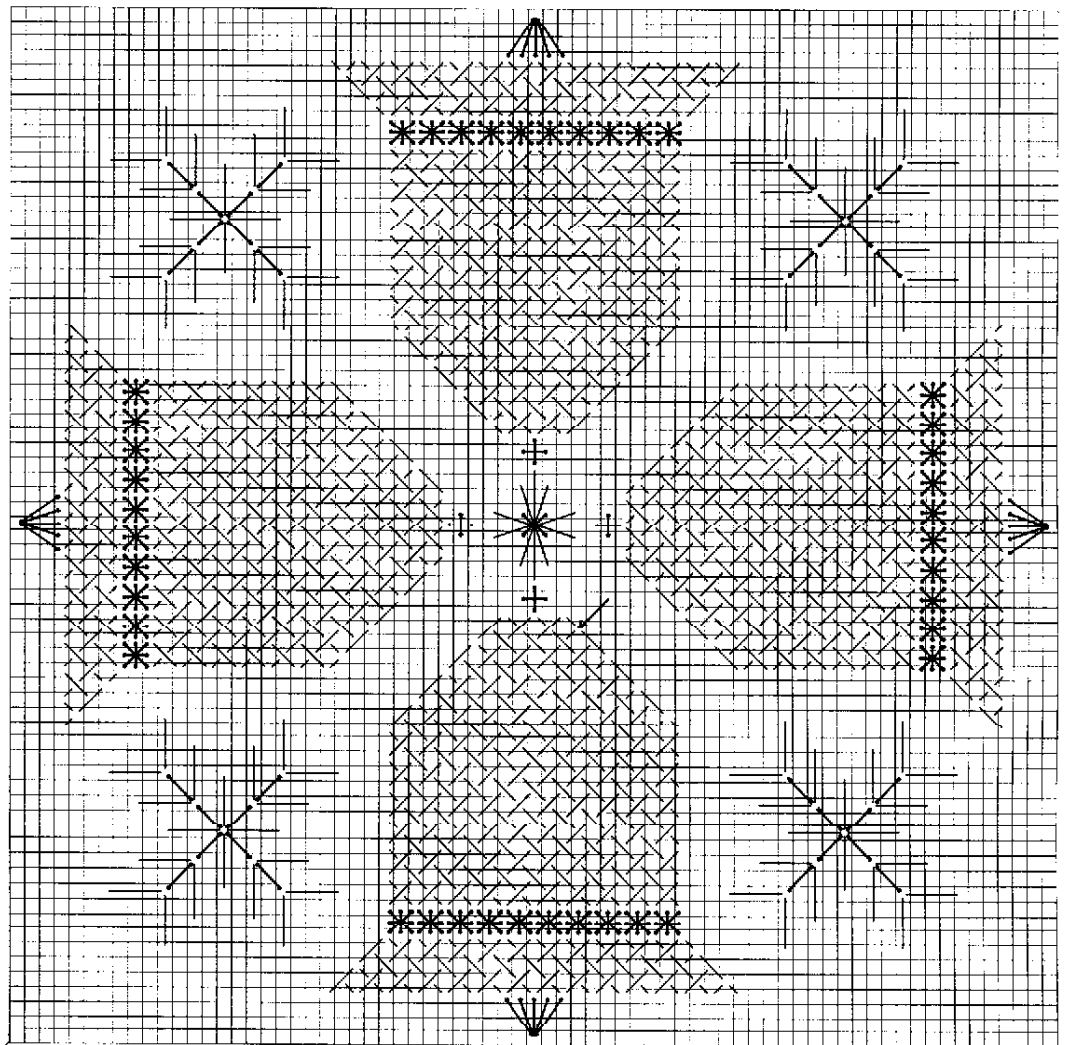


#4



Neon Rays

Fyre Werks



Rainbow Gallery

7412 Fulton Ave., #5, North Hollywood, CA 91605

Photocopying of this design is invited.