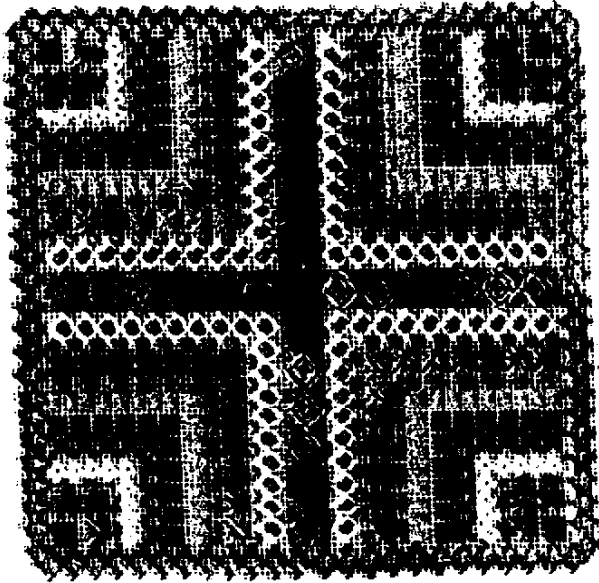


# A SMALL SAMPLING <sup>©1993</sup>

## A Carol Mullane Design for Rainbow Gallery

(Finished size 5<sup>3</sup>/<sub>4</sub>" x 5<sup>3</sup>/<sub>4</sub>" )



### Materials

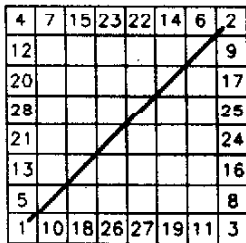
- 10" x 10"—#18 White Mono Canvas
- 1 Card Overture™ (V62—Blues & Golds)
- 1 Card Fyre Werks™ (F2—Gold)
- 1 Card Fyre Werks™ (F36—Royal Blue)
- 1 Card Matte 18 (M044—Beige)  
OR (M087—Lite Mauve)
- 1 Card Flair™ (F512—Dark Antique Mauve)
- Gick Seed Beads—#58

### Alternate Color Scheme:

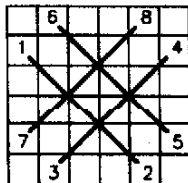
- 1 Card Overture™ (V59—Bayou)
- 1 Card Fyre Werks™ (F2—Gold)
- 1 Card Fyre Werks™ (F5—Silver)
- 1 Card Matte 18 (M087—Lite Mauve)
- 1 Card Flair™ (F551—Lite Tan)
- Gick Silver Beads—Silver

Or pick your own.

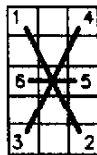
1. Begin stitch in the center of the design with Waffle stitch. Use at least a 30" length of Overture (V62). This stitch forms a cross 13 Waffle stitches by 13 Waffle stitches through the center of the canvas. The first two stitches of each Waffle stitch is shown on the master chart. The center of the canvas is marked by a circle.
2. Follow the sequence of stitches as shown on the master chart, starting with the Diamond in Matte 18 (M044). This stitch is worked in 3 steps. See diagrams 2a, 2b and 2c.
3. Continue with the Strap—1 ply Overture (V62); Tied Cross—Fyre Werks (F2); Scotch—Flair (F512); Trellis—Fyre Werks (F36).
4. The Braid is worked in Matte 18 (M044). See diagram 8. When going from 5 to 6, slip the needle under 1-2; when going from 7 to 8, slip the needle under 3-4. Small fill-in stitches are worked in Overture above and below the Strap stitch and below the Braid stitch.
5. Continue out with the Strap—1 ply Overture (V62) and Scotch—Flair (F512).
6. Work the Diamond stitch (1 ply Overture) around the entire design noting the compensation at the Waffle stitch.
7. Bead the center of the Matte 18 Diamond stitch. Place 2 beads on the diagonal; changing the direction in each quadrant.



1. Waffle



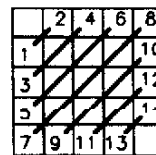
3. Strap



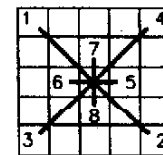
4. Tied



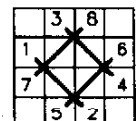
5. Scotch 3



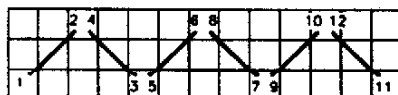
6. Scotch 4



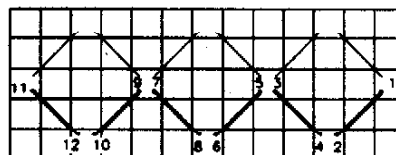
7. Trellis



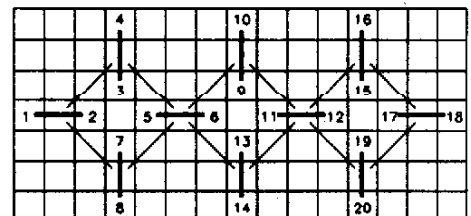
8. Braid



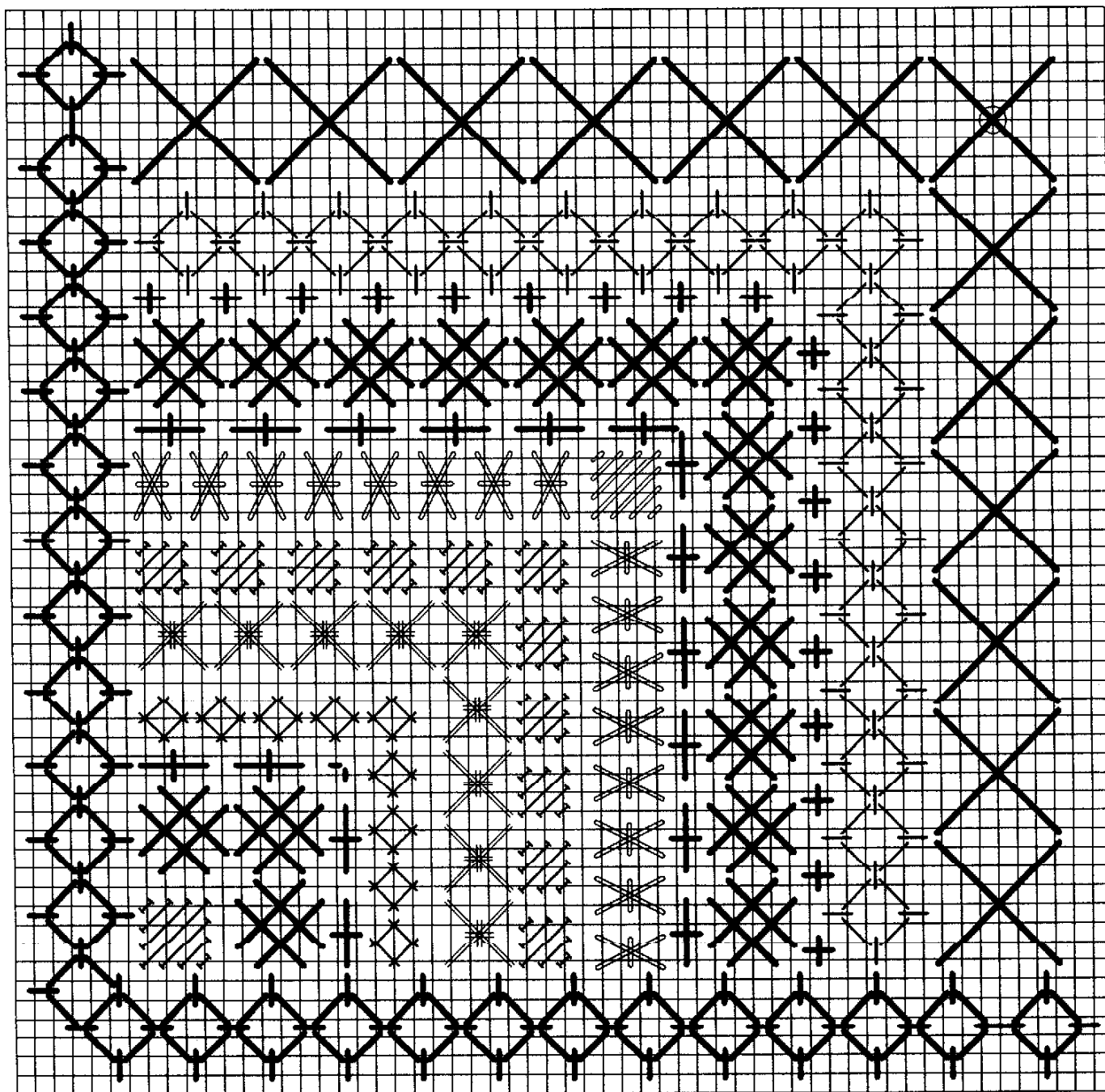
2a. Diamond—Step 1



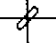

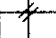


2b. Diamond—Step 2



2c. Diamond—Step 3



-  Overture (V62)
-  Matte 18 (M044)
-  Fyre Werks (F2)
-  Flair (F512)
-  Fyre Werks (F36)

Permission granted for shop owners and guilds to copy.  
 ©1993 Rainbow Gallery

Production by Lightworks