

# SNOWFLOWER TASSEL<sup>®</sup>

## A Ruth Schmuft Design for Rainbow Gallery

### Materials

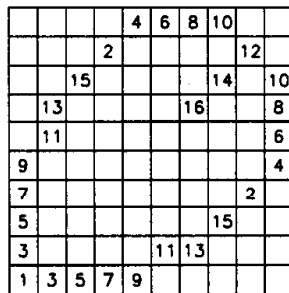
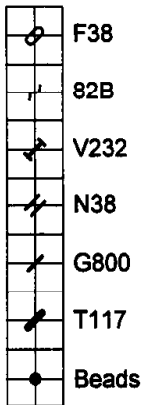
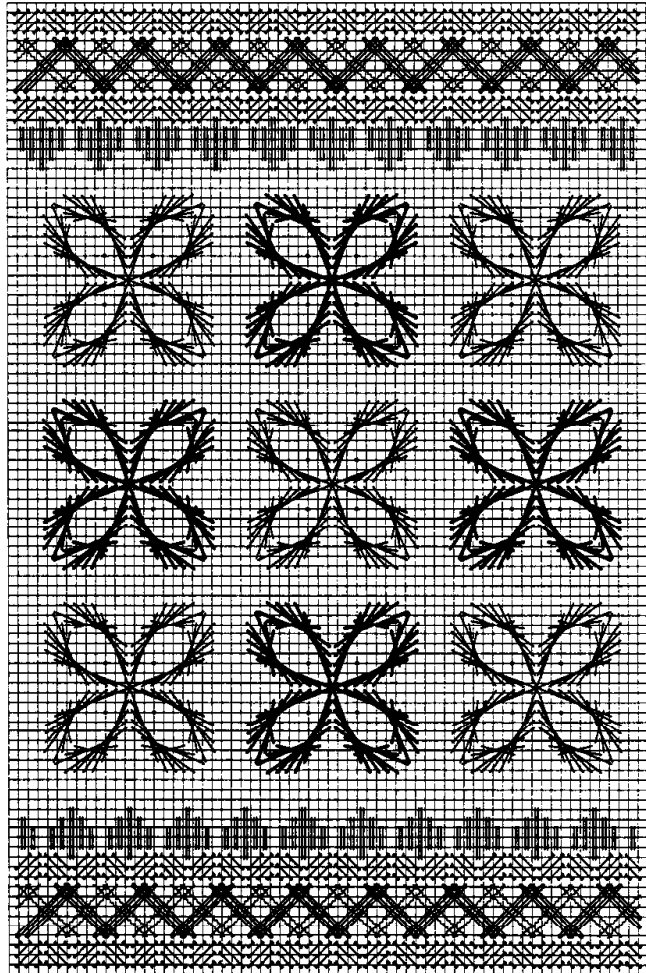
8" x 10"—18 ct. mono canvas (Victorian Red)  
 Stretcher bars to fit  
 #22, #20 Tapestry needles

1 card each:

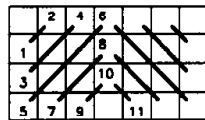
Fyre Werks<sup>®</sup> F38-Red  
 Coronet Braid<sup>®</sup> 82B-Arctic Gold  
 Very Velvet<sup>™</sup> V232-Brite Red  
 Neon Rays<sup>®</sup> N38-Emerald  
 Grandeur<sup>®</sup> G800-Cool White  
 Tiara<sup>®</sup> T117-White Pearl

1. Start in center of canvas and work modified Jessica flowers. See Diagram #1 for count and Master Chart for placement. Alternate flowers using 1 strand of Tiara (T117) and Grandeur (G800).
2. Vertical Long Stitch Band is worked using Neon Rays (N38).
3. Modified Alternating Scotch Stitches are worked using Very Velvet (V232). See Diagram #2 (omit last stitch for modified version). See Master Chart. Use #20 needle and keep a short tail.
4. Four-trip Herringbone. See Diagram #3. Count the same on all four trips. Trips 1 and 2—Coronet Braid (82B); Trips 3 and 4—Fyre Werks (F38).
5. Alternating Scotch Stitches in Very Velvet (V232). See Diagram #2.
6. Optional: Add small gold beads in the center of each flower petal.

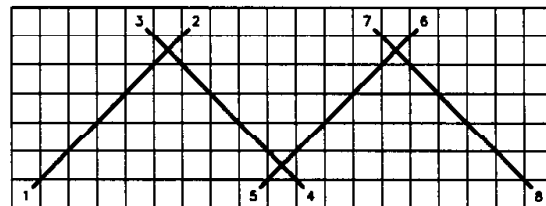
Finish as a roll-up ornament with a tassel at the bottom.



**DIAGRAM #1**



**DIAGRAM #2**



**DIAGRAM #3**

Photocopying of this design is invited.

**RAINBOW GALLERY**  
 7412 Fulton Ave., #5, N. Hollywood, CA 91605