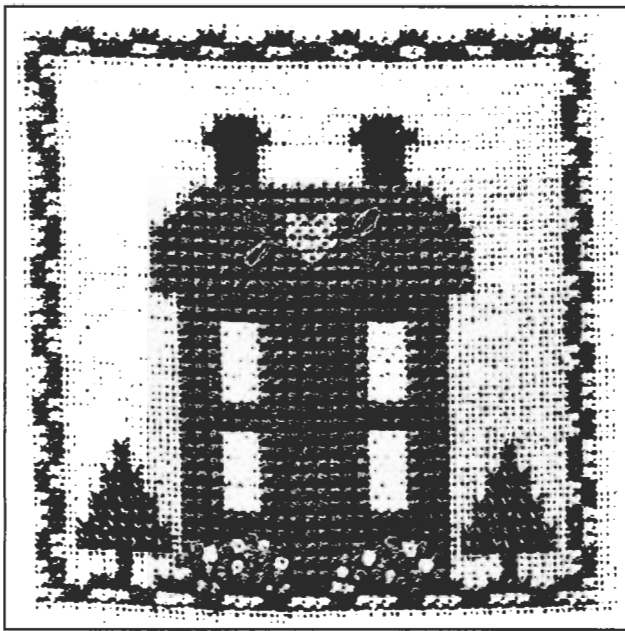


Spring Sampler House

A Pam Miller Design for

Rainbow Gallery



3" X 3"

MATERIALS

28 Ct. Lambswool Linen by Wichelt 9" x 9"

1 card each of Mandarin Floss

◇ M802 – White

M805 – Lite Antique Mauve

✕ M820 – Camel

○ M821 – Dark Beige

= M824 – Deep Wedgewood

★ 1 strand M817 – Cedar and

1 strand M819 – Midnight Green

French Knots: M804 – Medium Raspberry,

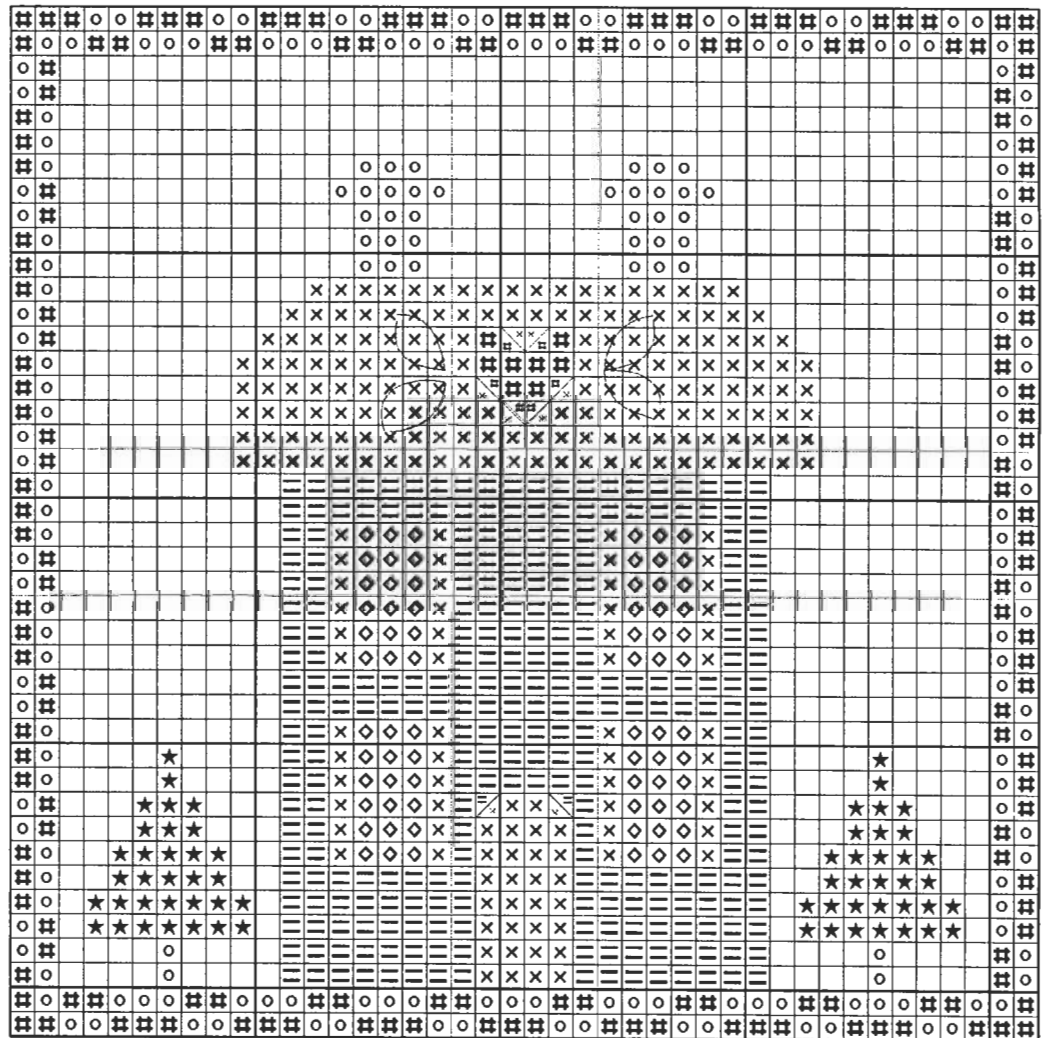
M807 – Lite Violet, M813 - Yellow

1. Cross stitch according to chart using 2 ply Mandarin Floss. This is a 6 ply floss. You will need to separate and use 2 ply. For the trees, use 1 ply M817 & 1 ply M819.

2. Stitch Lazy Daisy's on each side of heart on roof with 2 ply M817 as on chart.

3. For door knob do a French Knot with 1 ply M821.

4. Randomly place French Knot flowers under the windows in 2 ply M807, M813, M804. Add a few French Knots in-between with M817 to fill in for greenery.



©Rainbow Gallery 2005
May be photocopied for
free distribution.