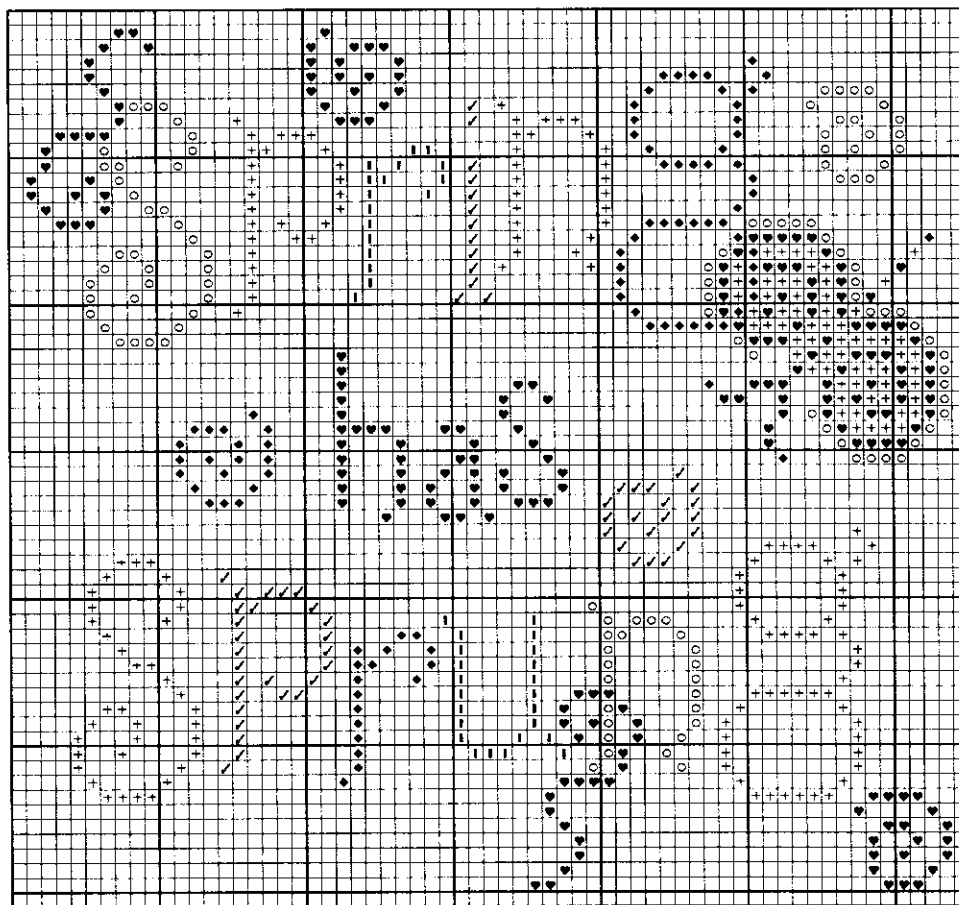


April's "Spring Has Sprung"



Stitch count: 59h x 63w – 4¾”h x 5”w 25ct white Linen-Pearl from Wichelt Imports (#60902-1)

Rainbow Gallery Fibers-1 card each

- | | |
|--|--|
| <ul style="list-style-type: none"> I S878 Splendor® Maize – 2 ply
H623 Hi-lights Yellow Pearl – 1 strand ◆ S885 Splendor® Dark Rose Pink – 2 ply
H610 Hi-lights Hot Pink – 1 strand ♥ S917 Splendor® Lite Antique Violet – 2 ply
H621 Hi-lights Violet – 1 strand | <ul style="list-style-type: none"> + S932 Splendor® Lite Blue Violet – 2 ply
H605 Hi-lights Silver – 1 strand ✓ S944 Splendor® Orange Sherbet – 2 ply
H632 Hi-lights Melon – 1 strand ○ S1058 Splendor® Lt Spring Green – 2 ply
H638 Hi-lights Christmas Green – 1 strand |
|--|--|

Make cross-stitches over two threads of the Linen-Pearl using 2 ply of Splendor silk and 1 strand of Hi-lights combined in your needle. If you prefer, you can use the Splendor silk alone, but it will lack the sparkle the Hi-lights adds to the piece.

NOTE: Work using rather short lengths to help minimize fraying.

Designed by
ERICA MICHAELS
DESIGNS FOR COUNTED CROSS STITCH

Go to www.ericamichaels.com for
 more designs by Linda Stolz

See many more of our designs and
 learn more about our products at
www.rainbowgallery.com

Come back for each new monthly design!