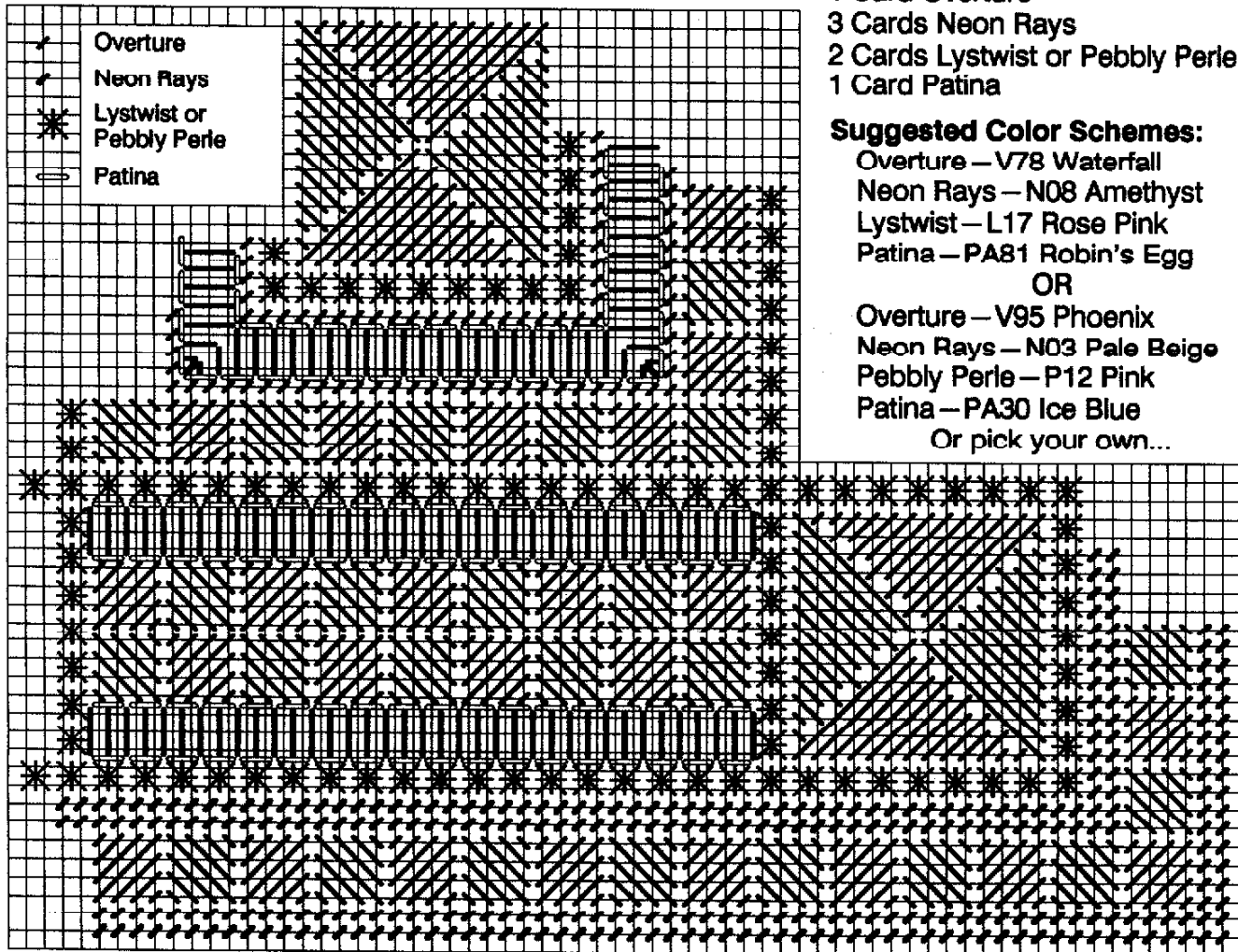


SQUARES 'N SQUARES ©1990

A Sandi Ragan Design for Rainbow Gallery



5" x 5" — #18 Mono Canvas

1 Card Overture

3 Cards Neon Rays

2 Cards Lystwist or Pebbly Perle

1 Card Patina

Suggested Color Schemes:

Overture — V78 Waterfall

Neon Rays — N08 Amethyst

Lystwist — L17 Rose Pink

Patina — PA81 Robin's Egg

OR

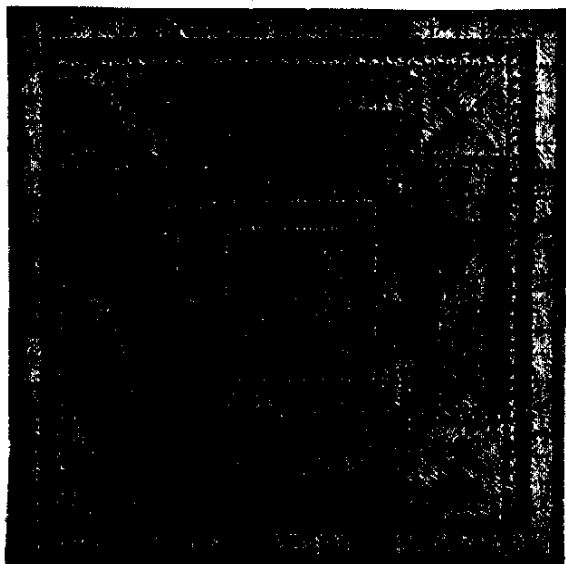
Overture — V95 Phoenix

Neon Rays — N03 Pale Beige

Pebbly Perle — P12 Pink

Patina — PA30 Ice Blue

Or pick your own...



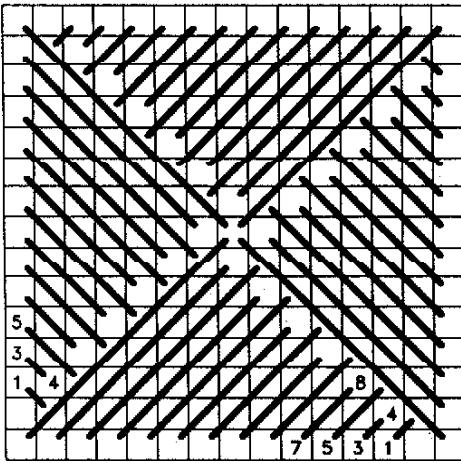
Use #22 needle for Neon Rays and
#24 for remaining fibers.

1. Center square is stitched in 1 ply Overture.
2. Smyrna Crosses are worked outside the center square in Lystwist or Pebbly Perle, working from left to right. Rotate chart, if you rotate your canvas.
3. The next square is row of Continental in 1 ply Overture.
4. Upright Gobelin using Neon Rays. Carefully lay the Neon Rays. For best results, stitch over two rows of tramé padding. Then another row of Continental in 1 ply Overture.

SQUARES 'N SQUARES ©1990

5. Backstitch on either side of the Upright Gobelin with 1 ply of Patina. (Smooth Patina with damp paper towel.)
6. Alternating Scotch Stitches in 1 ply Overture make up the next square. Continue working the squares out from the center as shown on main chart.
7. Two rows of Basketweave in Neon Rays are stitched outside the last square of Smyrna Crosses and outside the last square of Alternating Scotch stitches.

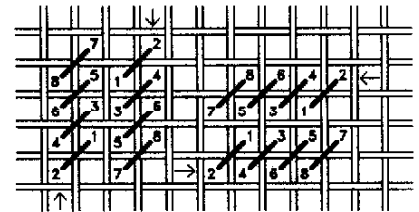
1. Center Square



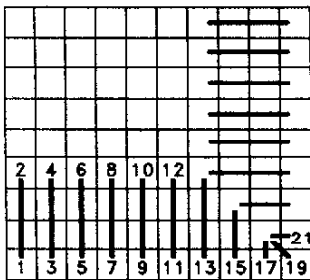
2. Smyrna Cross — working left to right.



3. Continental
Arrows indicate the stitch direction.



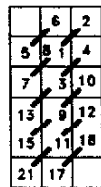
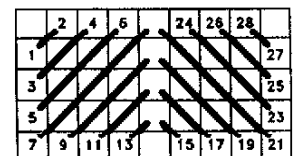
4. Upright Gobelin
with Corner



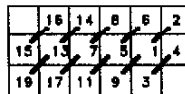
5. Backstitch



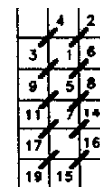
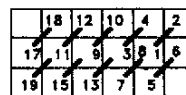
6. Alternating Scotch



7. Basketweave — when first stitch is over a vertical thread. (2 rows)



When first stitch is over a horizontal thread.



Permission granted for shop owners and guilds to copy. ©1990 Rainbow Gallery

Production by Lightworks
(714) 892-9124