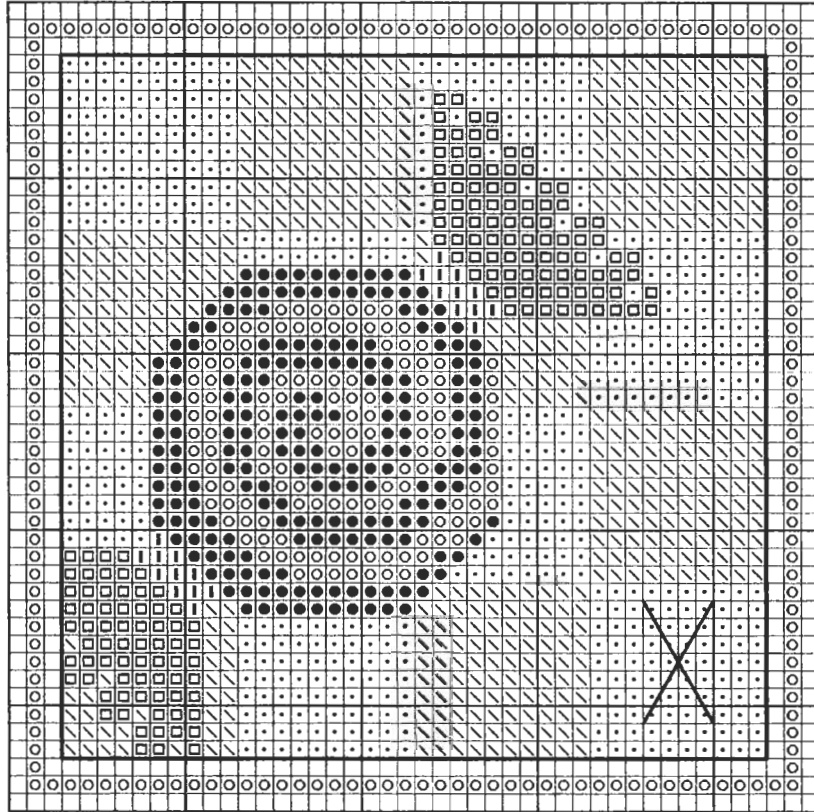


DECEMBER - STOCKING STUFFER

Stitch count: 44h x 44w – approx. 3”h x 3”w ♥ 28ct Wheaten Country French linen from Wichelt (#86-267) stitched over two or 14ct Wheaten Country French Soft Touch Aida (#367-267)



Rainbow Gallery Fibers - 1 card each

- E800 Elegance™ Cool White – 1 strand
- E820 Elegance™ Ruby Red – 1 strand
- H625 Hi-Lights White Pearl – 1 strand
- ND2 Nordic Gold® Gold – 1 strand
- ∖ S1063 Splendor® Fern Green – 2 ply
- S1064 Splendor® Dk Fern Green – 2 ply

After completing all cross stitches, back stitch with 1 strand Nordic Gold around the edge of the main design area as indicated by the solid line on the chart. Attach the gold stocking charm in the lower right corner with Fern Green Splendor® (note that the ring of the charm where you actually attach it will fall into the block just above). (*charm #88052 from By Jupiter!*)

Go to www.ericamichaels.com for

ERICA MICHAELS
DESIGNS FOR COUNTED CROSS STITCH

more designs by Linda Stolz

See many more of our designs and
learn more about our products at
www.rainbowgallery.com

Model framed by Homespun Corner, Clarksville TN with Wood 'N Needle Crafts #FF G LL (Forest Green)

Come back for next month's design!