

susan portra design for Rainbow Gallery August 1989

8" x 8" - 18 mono

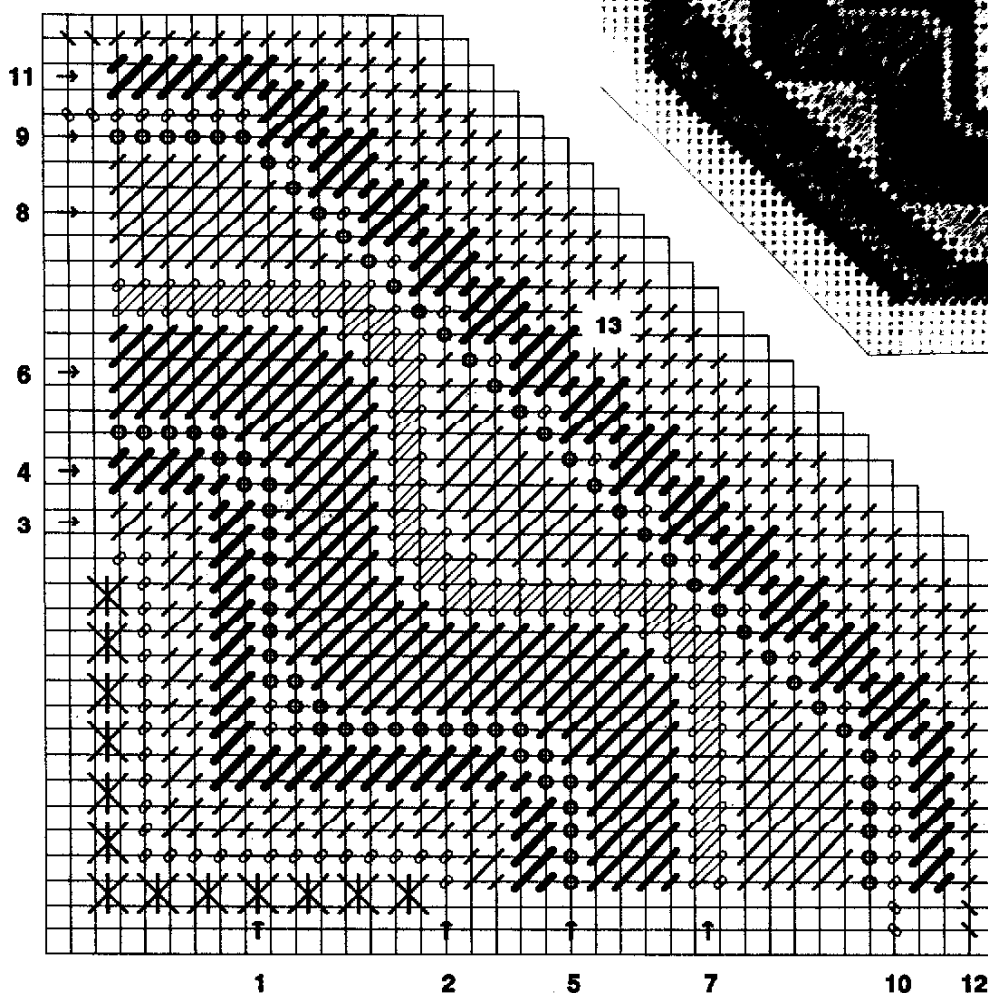
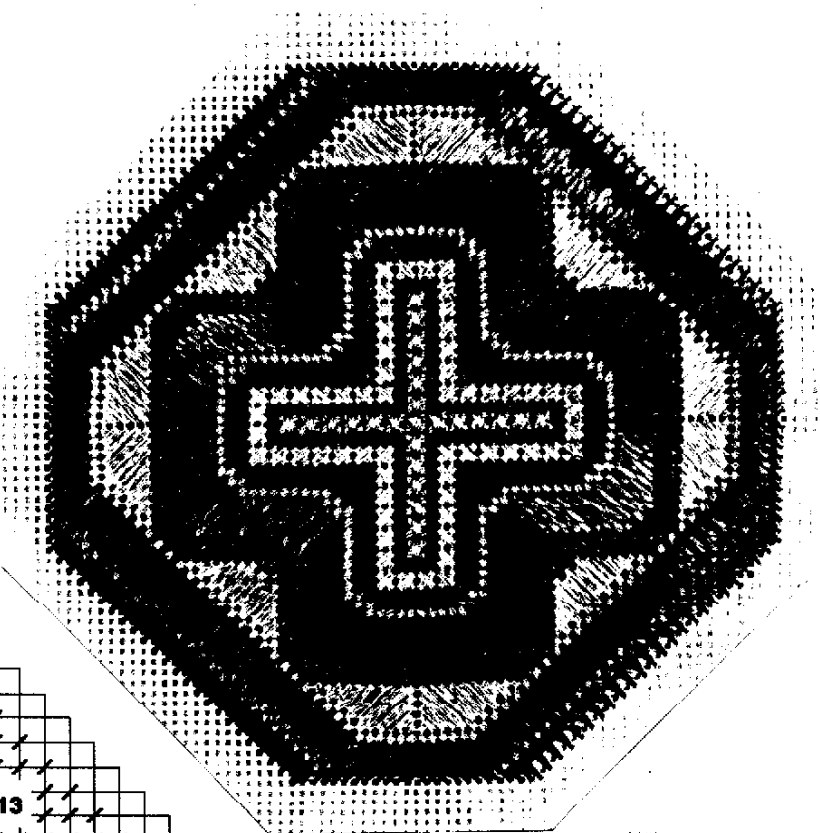
Fibers—1 card each

Overture, Neon Rays, Pebbly Perle & Fyre Werks

This design is a quarter—reverse direction of stitches at each quadrant.

Possible fiber color choices: V 35, N 05, F 36, P 17 OR V 58, N 48, F 2, P 15

RAINBOW ORNAMENT©1989



1. Pebbly Perle (as is)
2. Fyre Werks
3. Neon Rays
4. 1 ply Overture
5. 4 ply Pebbly Perle
6. 1 ply Overture
7. Fyre Werks
8. Neon Rays
9. 3 ply Pebbly Perle
10. Fyre Werks
11. 1 ply Overture
12. 1 ply Overture
13. 1 ply Overture
Basketweave

Permission for shop owners to copy.

Computer Production by Lightworks
(714)892-9124