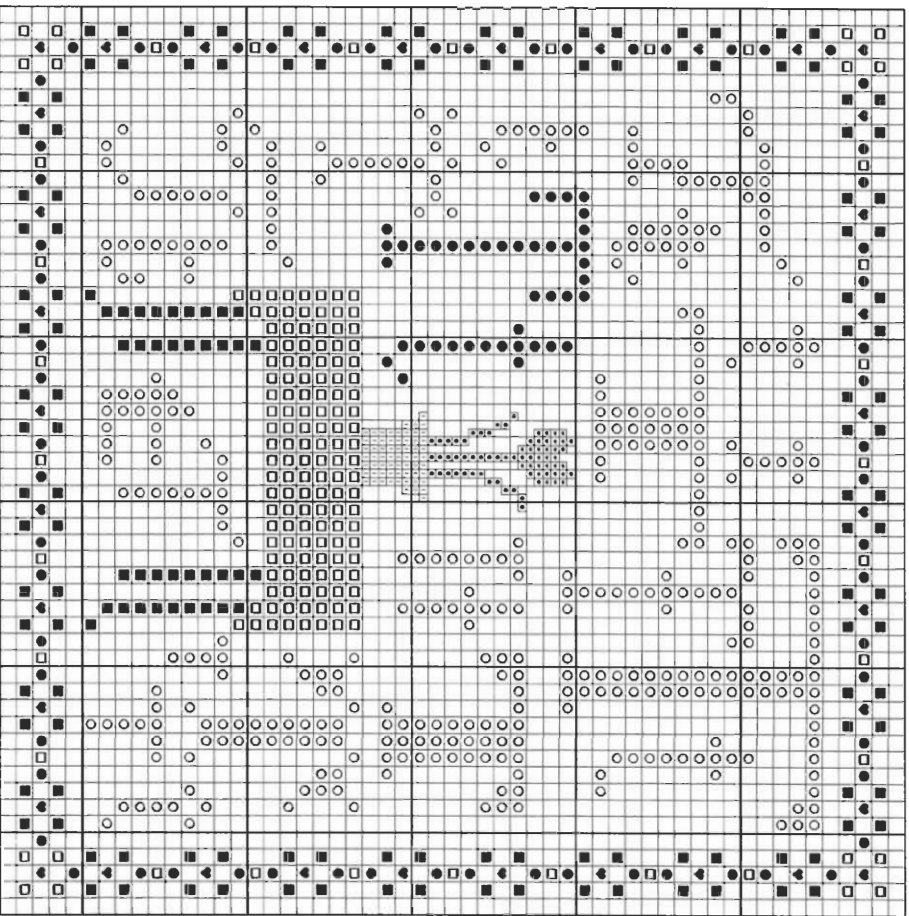


“T” is for Tulip on a Table & the Tent Stitch

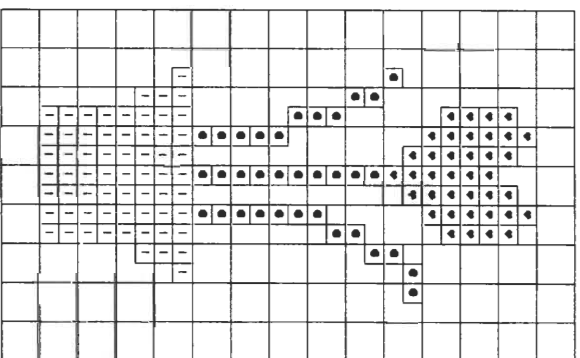
Stitch count: 53h x 53w – approx. 4”h x 4”w stitched over 2 threads on 28ct Clay Cashel linen from Zweigart (#3281-715)



Rainbow Gallery Fibers - 1 card each

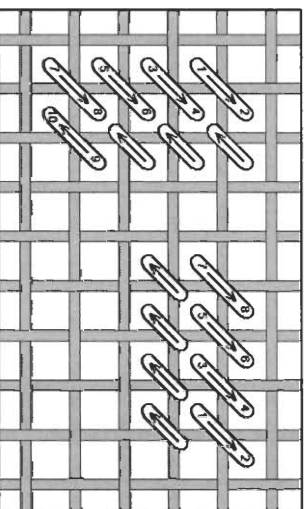
- M830 Mandarin Floss Coffee Bean – 2 ply
- M894 Mandarin Floss Dark Teal – 2 ply
- S802 Splendor® White – 2 ply
- S820 Splendor® Ruby Red – 2 ply
- ! S925 Splendor® Lite Brick – 2 ply
- S1140 Splendor® Dark Apple Green – 2 ply

After completing all cross stitches, use 1 ply of each of the threads indicated by the symbols to make the small tent stitches over 1 thread of linen or evenweave fabric. Use the detail chart to help you stitch the potted tulip and tablecloth detail (*Lite Brick* pot, *Apple Green* stems, *Ruby Red Tulip*). The small symbol squares on this detail chart are the over-one stitches and the larger grid represents 2 threads of your evenweave fabric or one square on the main chart.



Tent Stitches

This is basically a half cross stitch – working this as a “Continental Tent” helps keep the thread from slipping under the weave of the fabric while stitching, and will have diagonal stitches on the back side. Follow the numbers in the stitch diagram – stitches are shown worked both vertically and horizontally. Notice that your needle changes direction when you start a new row (indicated by the arrows).



NOTE: Grid lines in stitch diagram represent one thread of your evenweave or linen fabric.

See many more of our designs and learn more about our products at www.rainbowgallery.com

Model framed by Lynne's Custom Framing, Clarksville TN
 East Side Mouldings #OCON, www.eastsidemouldings.com
 Individual frame sizes: 5-3/4" square

ERICA MICHAELS
 NEEDLEART DESIGNS

See more designs at www.ericamichaels.com

Come back for next month's design, and collect the entire alphabet!

© 2007 RAINBOW GALLERY Permission to photocopy for free distribution.