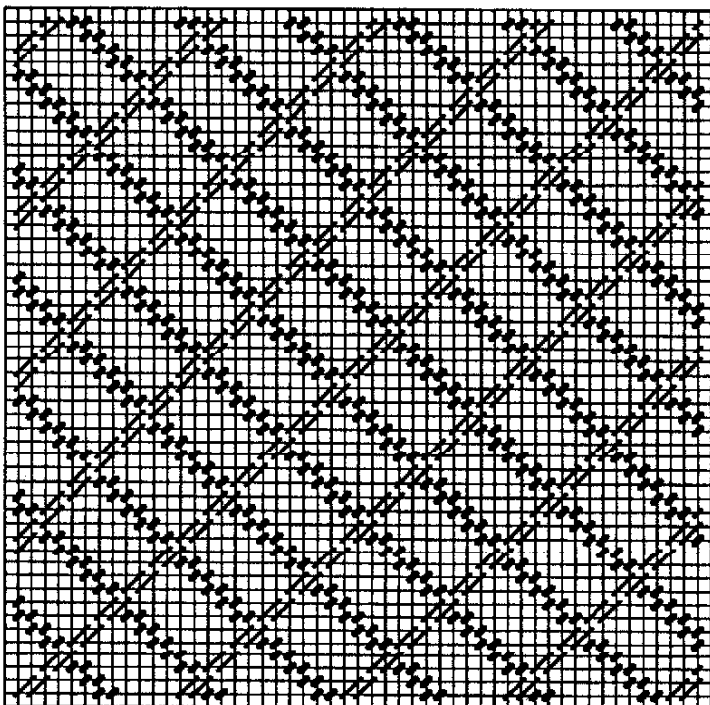
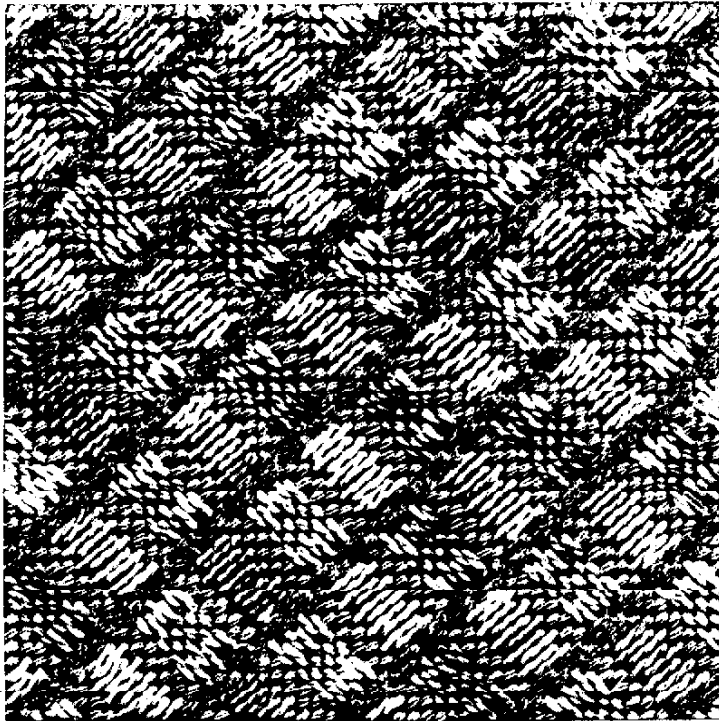


TARTAN TANGENTS^{©1991}

A Carol Mullane Design for Rainbow Gallery

8" x 8" — #13 or #14 Mono Canvas
(Finished size 4" x 4")

One Card each: Overture™, Fyre Werks™ and
Pebbly Perle™ or Matte 18



Suggested Color Schemes:

Overture — V59 Bayou
Fyre Werks — F2 Gold
Pebbly Perle — P12 Pink

Overture — V95 Phoenix
Fyre Werks — F5 Silver
Matte 18 — M237 Seafoam

Overture — V28 Lagoon
Fyre Werks — F37 Aqua
Pebbly Perle — P23 Jade

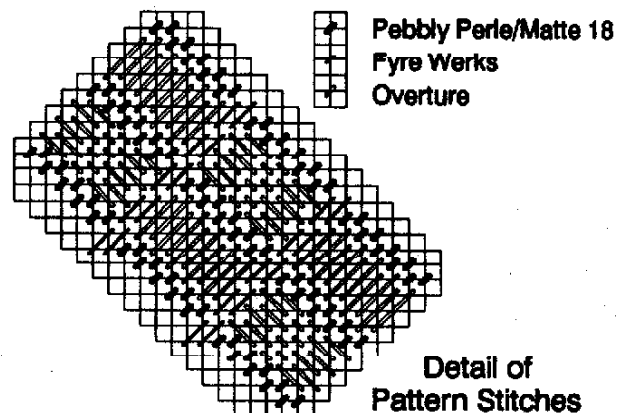
Overture — V75 Dried Flowers
Fyre Werks — F2 Gold
Matte 18 — M079 Celery

Or make your own combinations.

First, stitch the diagonal rows of Pebbly Perle or Matte 18, then the diagonal rows of Fyre Werks. Fill in the rectangles (see detail below) with one ply of Overture. Keep edge areas in pattern and compensate as needed.

This pattern invites experimentation and variations. Try a contrasting color of Neon Rays in the alternating blocks, etc.

The design can be easily expanded to any desired size by lengthening the diagonal lines. Use for a telephone or paperback book cover, an evening bag or ?



Permission granted for shop owners and guilds to copy. ©1991 Rainbow Gallery

Production by Lightworks
(714) 892-9124