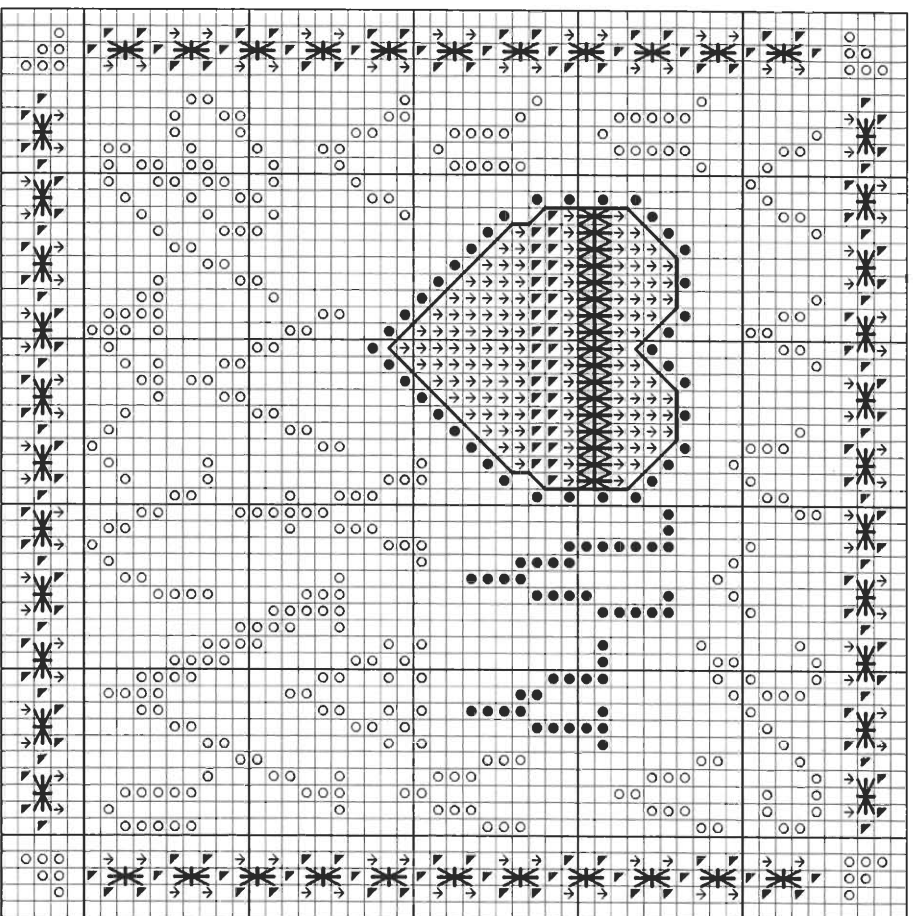


“V” is for Valentine & the Vertical Elongated Smyrna Stitch

Stitch count: 53h x 53w – approx. 4”h x 4”w stitched over 2 threads on 28ct Clay Cashel linen from Zweigart (#3281-715)



Rainbow Gallery Fibers - 1 card each

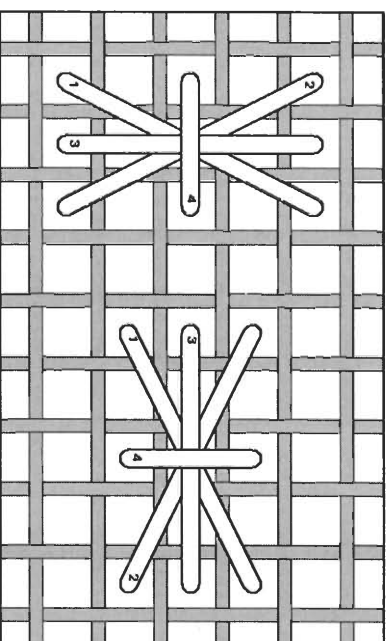
- ↳ SK27 Sparkle! Braid Shimmer Pink – 1 strand
- ↳ S884 Splendor® Baby Pink – 2 ply
- S1067 Splendor® Dark Raspberry – 2 ply
- PB04 Treasure Braid™ Petite Silver – 1 strand

After completing all cross stitches, make the elongated Smyrna stitches as follows: 1) use 1 ply of S1067 Dark Raspberry for the vertical Smyrnas within the heart shape; 2) use 1 strand of PB04 Silver for the vertical and horizontal ones in the border. Lastly, with 1 ply of S1067 Dark Raspberry, backstitch around the heart shape as shown on the chart.

Vertical Elongated Smyrna

Just as in the standard Smyrna stitch, make the base cross first – this time it is a vertical or elongated shape worked over 4 threads in one direction and 2 threads in the other to cover a rectangle of threads. Finish the stitch by making the top straight cross as shown. (Diagram shows this stitch worked both vertically and horizontally.)

NOTE: Grid lines in stitch diagram represent one thread of your evenweave or linen fabric.



ERICA MICHAELS
NEEDLEART DESIGNS

See more designs at www.ericamichaels.com

See many more of our designs and learn more about our products at www.rainbowgallery.com

Model framed by Lynne's Custom Framing, Clarksville TN
East Side Mouldings #OCOM, www.eastsidemouldings.com
Individual frame sizes: 5-3/4" square