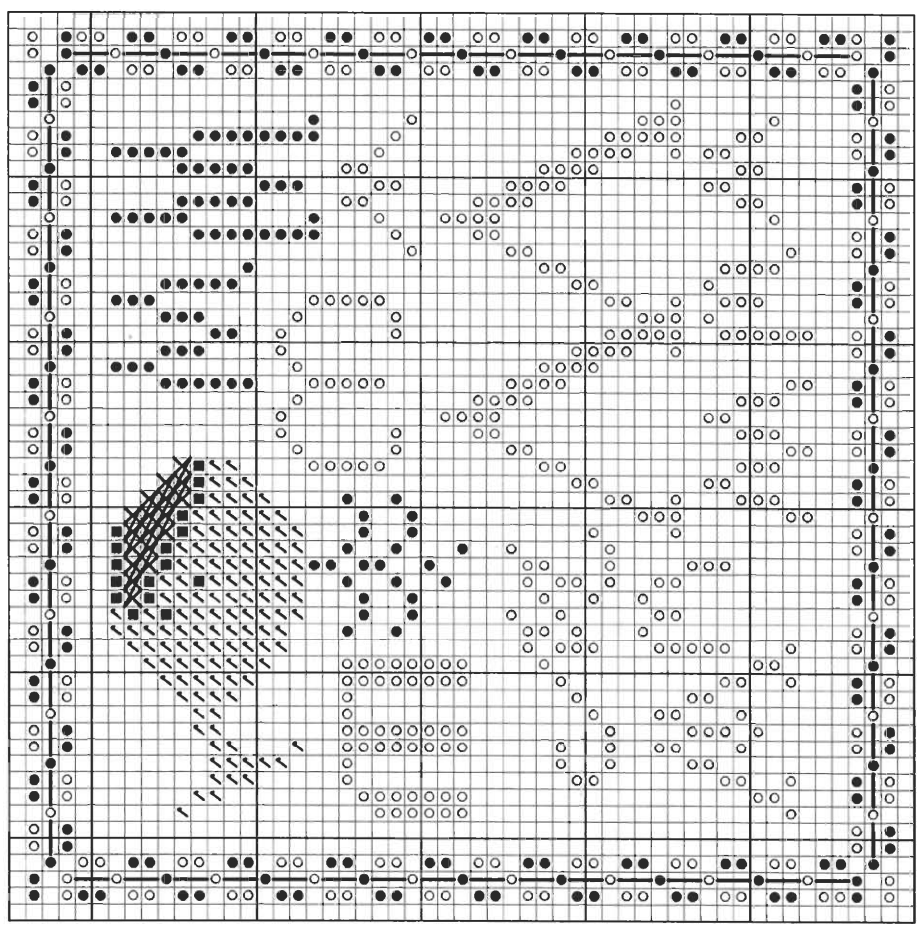


“W” is for Whale & the Williamsburg Stitch

Stitch count: 53h x 53w – approx. 4”h x 4”w stitched over 2 threads on 28ct Clay Cashel linen from Zweigart (#3281-715)



- Rainbow Gallery Fibers - 1 card each**
- M826 Mandarin Floss Pearl Gray – 1 ply
 - M890 Mandarin Floss Dark Navy – 2 ply
 - M893 Mandarin Floss Teal – 2 ply
 - SK13 Sparkle! Braid Lite Blue – 1 strand
 - ✓ S1076 Splendor® Dark Blue Violet – 2 ply

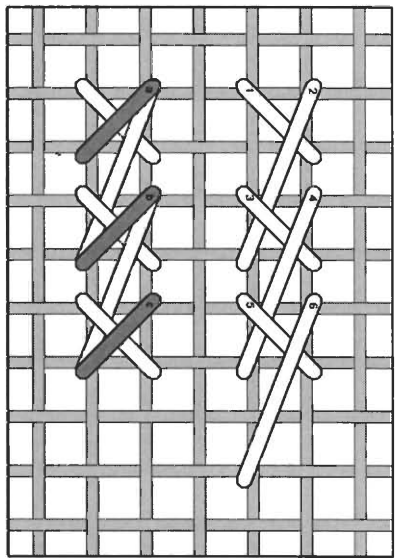
After completing all cross stitches per the chart, make straight stitches in the border with 1 ply of S1076 Dark Blue Violet. Fill the whale's mouth with Williamsburg stitches using 1 ply of M826 Pearl Gray.

Williamsburg Stitch

This stitch is worked in two journeys. In the first pass, the initial leg is a like the beginning of a standard cross stitch, worked over 2 threads from lower left to upper right. The second leg is worked from the upper left – but extends down to the lower right over 4 threads rather than 2.

The second journey (which can be made with a contrasting color) is shown by the dark gray lines in the diagram, and is worked over 2 threads from upper left to the lower right.

NOTE: Grid lines in stitch diagram represent one thread of your evenweave or linen fabric.



ERICA MICHAELS
NEEDLEART DESIGNS

See more designs at www.ericamichaels.com

See many more of our designs and learn more about our products at www.rainbowgallery.com

Model framed by Lynne's Custom Framing, Clarksville TN
East Side Mouldings #OCON, www.eastsidemouldings.com
Individual frame sizes: 5-3/4" square

Come back for next month's design, and collect the entire alphabet!

© 2007 RAINBOW GALLERY Permission to photocopy for free distribution.