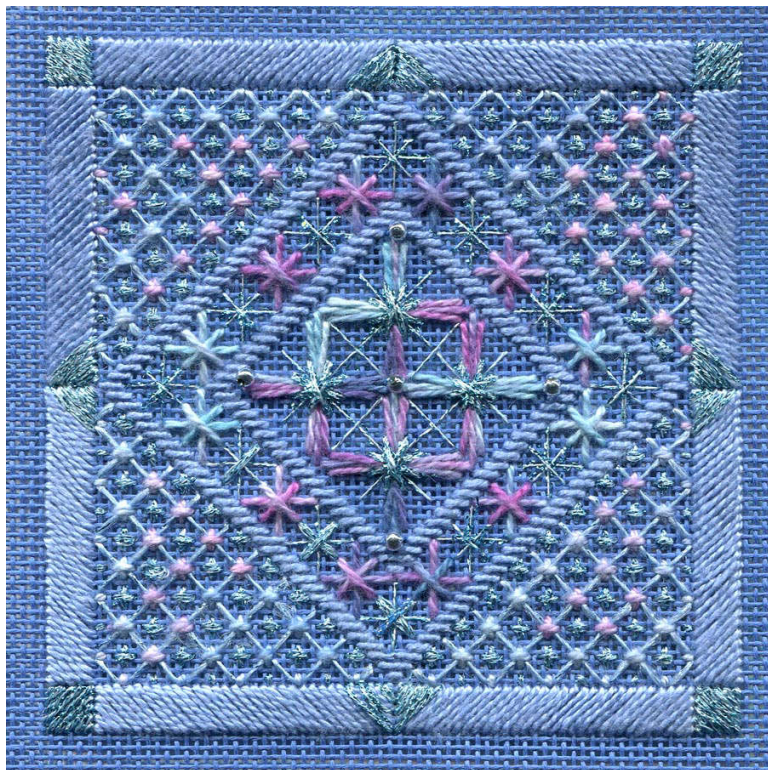


# Winter Stars



## e General Instructions: e

- To keep work taut, stretcher bars or scroll bars are highly recommended.
- Start all threads with a waste knot on top of canvas; end all threads by weaving them into the back of existing work. Avoid carrying threads across the back of unstitched canvas.
- When using the variegated thread, stitch with 1 ply of the 4-ply cotton. Cut a length of thread, then separate it into 4 plies - but stitch with only 1 ply.
- When using the solid color Grandeur, stitch with the whole strand.
- Before attaching canvas to stretcher bars or scroll bars, mark your starting point in the center of canvas.
- When using metallic threads or braids, cut and stitch with shorter pieces to avoid fraying.
- NOTE: Each LINE on the graphs represent one THREAD of the canvas.

*These are the different stitches used in this design:*

## e Stitching Instructions: e

**Center Stars:** Find and mark the center of your canvas. From the center of your canvas, Fan Stitch the arms of each star shape using 1 ply of the variegated 4-ply Overture. Put a Triple Cross on top of each large star: first, make a large cross stitch on top with 1 strand of Sparkle! Braid SK18; next, add two elongated crosses on top of that, with 1 strand of Tiara T132.

**Narrow Diamond Borders:** Straight Stitch both narrow borders that frame the central star box using 1 strand of Grandeur S932.

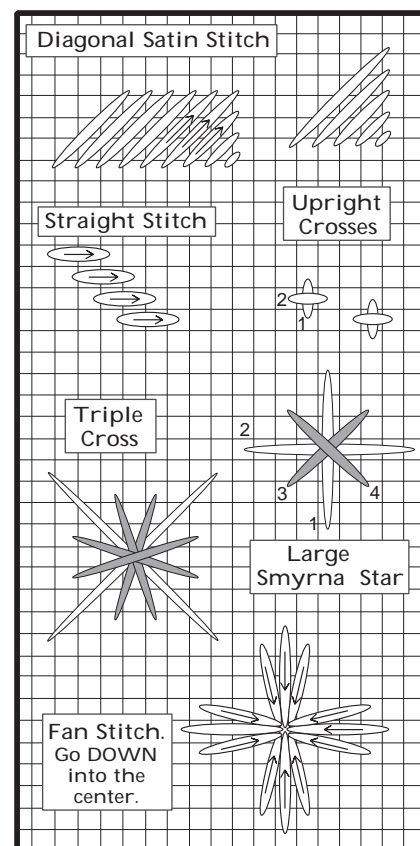
**Winter Star Border:** Fill the border with winter stars. First work the finer Smyrna Stars with 1 strand of Sparkle! Braid SK18, topping them with a cross stitch of 1 strand of Tiara T132. Next, create the remaining Smyrna Stars with 1 ply of the variegated 4-ply Overture.

**Starry Fields:** Fill in each quadrant with a field of small stars. First, work the four-way background lattice with 1 strand Sparkle! Braid SK18. Second, add a small Upright Cross at each lattice intersection, using 1 ply of the variegated Overture. Third, place a small Upright Cross inside each lattice opening, using 1 strand of Tiara T132. [Note: for a different look, you can also switch the variegated crosses with the metallic crosses.]

**Wide Outer Border:** Diagonal Satin Stitch the wide outer border, going over 5 threads of canvas, with 1 strand of Grandeur. *NOTE: The border stitch direction changes in each quadrant of the design.* At the centers, add diagonal stitches of Tiara T132. In the corners, make diagonal satin stitch squares with 1 strand of Tiara T132.

[**OPTIONAL:** Add some beads - of your own color choice - wherever you want. I've shown a few places to put beads on the main graph. ]

**Finishing Ideas:** This small square design can be inset in a pillow; put on a wooden box top; set on point and made into an ornament; or framed. Enjoy these winter stars!








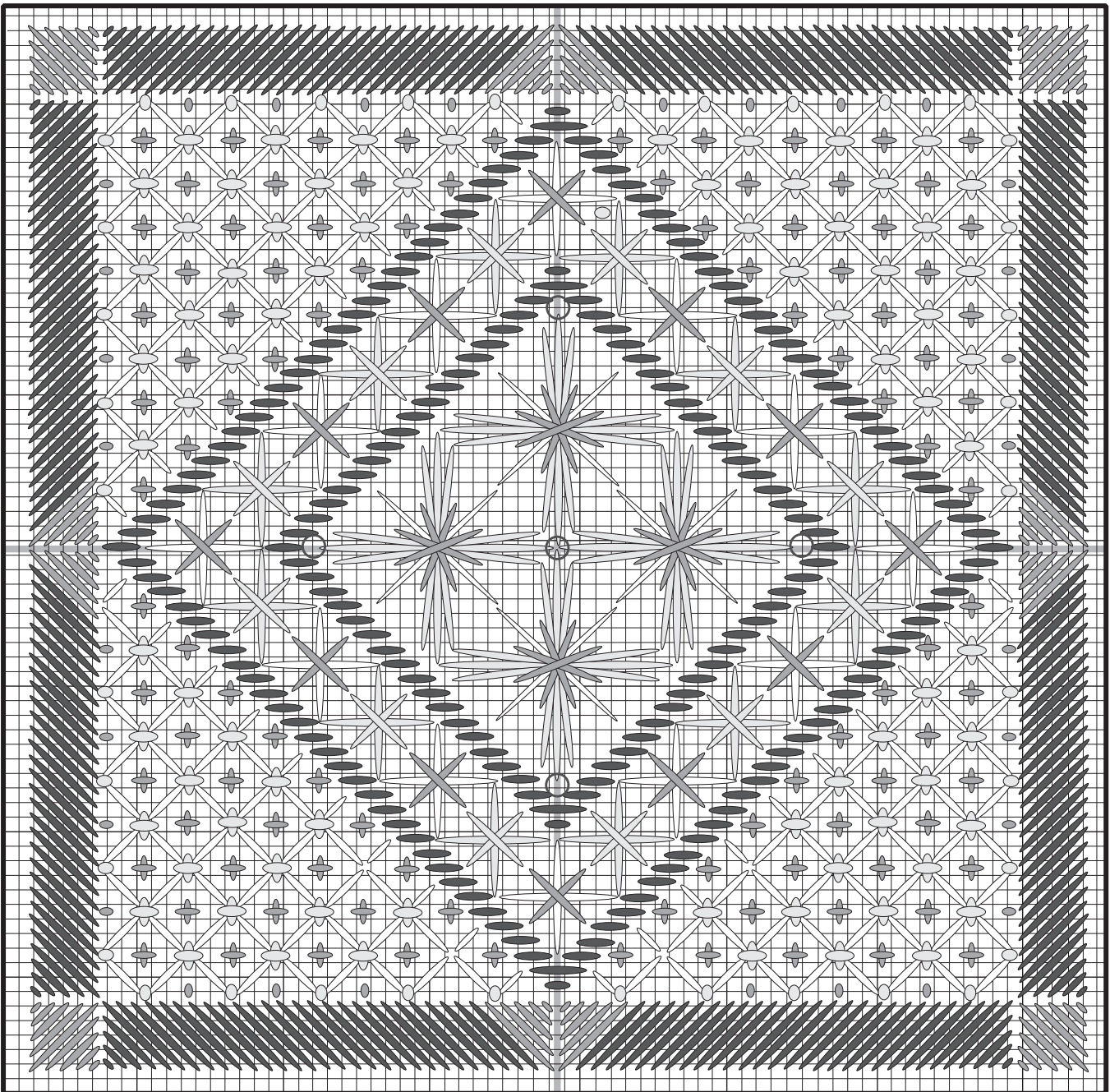
*Designed for Rainbow Gallery  
by*

**Laura J. Perin Designs**

712 COLLEGE ST. HEALDSBURG, CA 95448 650-823-5373  
website: [www.ljperindesigns.com](http://www.ljperindesigns.com)

# Winter Stars

Symbol	Materials	Design
	Overture (a 4-ply cotton), V90 - "Anemone"	Count: 72h x 72w threads Size: 18 ct: apprx. 4.5"h x 4.5"w (Cut canvas at least 8" x 8")  <i>This design can be done in lots of different thread colors, on lots of different canvas colors. Use pale, bright or dark thread colors on light, medium or dark canvas. <b>Pick your variegated thread first</b>, then match one solid color and two sparkly metallics to it. Have fun playing with this design!</i>
	Grandeur, S932 - lite blue violet	
	Tiara, T132 - sky blue	
	Sparkle! Braid, SK18 - silver blue	
	<i>OPTIONAL: beads of your choice</i>	
#22 tapestry needle 8" x 8" 18 ct. mono canvas, in leventeen blue		



NOTE: Each LINE on this graph represent ONE thread of the canvas.