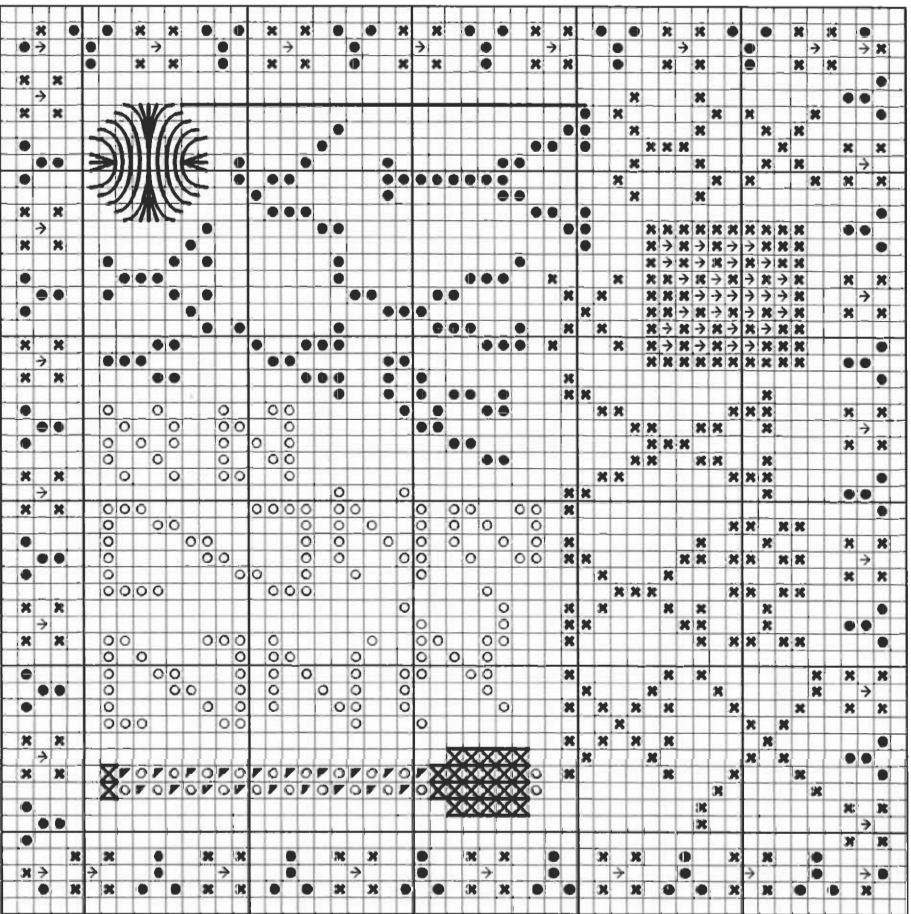


“X, Y, Z” are for X-Ray, Yo-Yo, & Zipper & the X, Y, and ZigZag Stitches

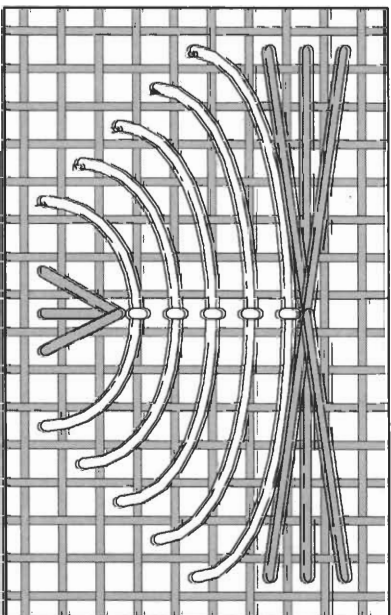
Stitch count: 53h x 53w – approx. 4”h x 4”w stitched over 2 threads on 28ct Clay Cashel linen from Zweigart (#3281-715)



Rainbow Gallery Fibers - 1 card each

- ↑ E802 Elegance™ White – 1 strand
- ▲ M891 Mandarin Floss Dark Pearl Gray – 2 ply
- RT33 Rainbow Tweed Dark Christmas Red – 1 ply
- ✱ S801 Splendor® Black – 2 ply
- S889 Splendor® Dark Gray – 2 ply

After completing all cross stitches per the chart (Yes, we “cheated” a bit for the letter “X” – it’s just your standard cross stitch!) use 2 ply of M891 Dark Pearl Gray to backstitch the yo-yo’s string. The yo-yo is worked using 1 ply of RT33 red in the fly stitch with a few compensating straight stitches (See diagram). The zipper pull and zipper bottom are worked using 1 ply of M891 Pearl Gray in the zigzag stitch.

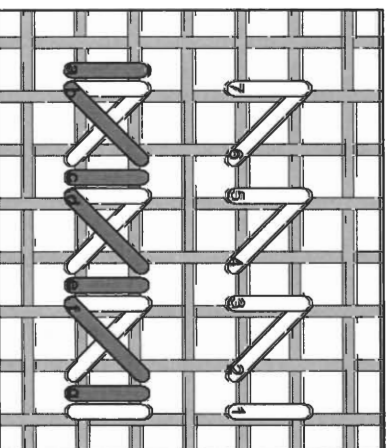


“Y” or Fly Stitch

Start as if making a straight stitch but come back up in the center at the desired location so you pull the stitch into a curved shape – tack each one down as you go with a small stitch over just one thread of linen or evenweave fabric. The diagram here shows the “Y” stitches arranged in a vertical row for the bottom half of the yo-yo – just repeat the same process for the top half, and then make the straight stitches (shown with the gray lines) to compensate and fill in the rest of the circular shape.

ZigZag Stitch

This is a 2-journey stitch. First pass is worked from right to left and each stitch from the bottom. It’s a sequence of vertical then diagonal stitches. The second pass (shown with the dark gray lines), working now from left to right, repeats each vertical bar and makes the diagonal in the other direction to complete the cross.



NOTE: Gnd lines in stitch diagrams represent one thread of linen or evenweave fabric.

See many more of our designs and learn more about our products at www.rainbowgallery.com

Model framed by Lynne’s Custom Framing, Clarksville TN
East Side Mouldings #OCON, www.eastidemouldings.com
Individual frame sizes: 5-3/4” square

See more designs at www.ericamichaels.com
ERICA MICHAELS
NEEDLEART DESIGNS

See your favorite retailer for “The Sampler Book” – complete instructions for finishing this series into a charming personalized booklet format.