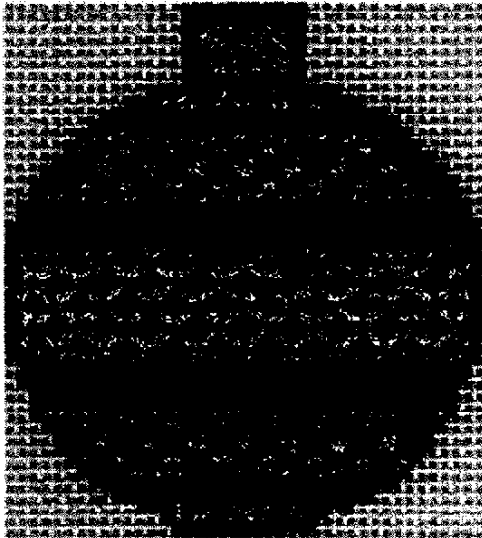


Cheryl Schaeffer's Christmas Ornament for Rainbow Gallery

©1999

Variation #8 by Mary Middlebrook



MATERIALS:

- 6" x 6"—#14 mono canvas (white)
- 1 card—Fyre Werks® F5-Silver
- 1 card—Fyre Werks® F14-Christmas
- 1 card—Flair® F530-Christmas Red
- 1 card—Flair® F533-Med. Christmas Green

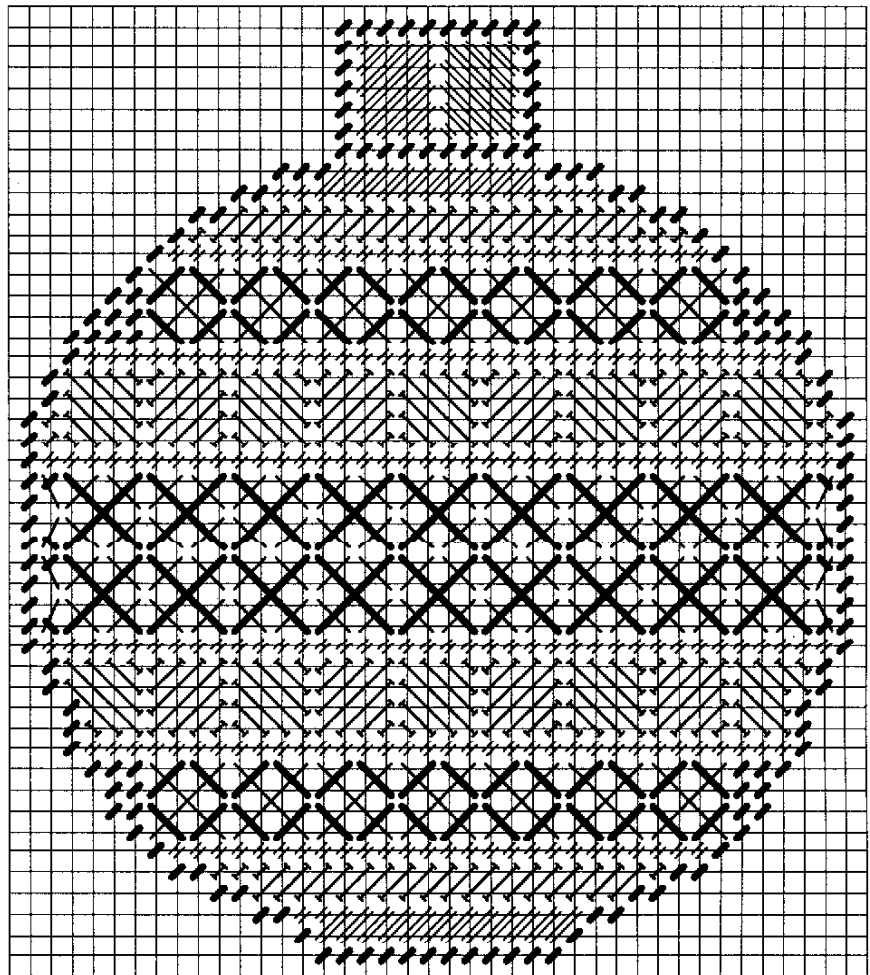
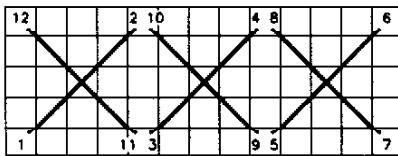
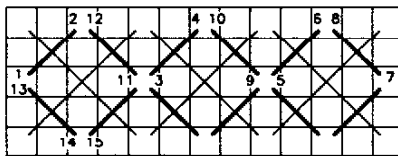


DIAGRAM #1—Giant Rice Stitch



STEP 1



STEP 2

Follow Master Chart and color legend.

1. Outline ball and top of ornament in Tent Stitch using F530. Fill in top with elongated alternating Scotch Stitches in F14.
2. Center band is 2 rows of Giant Rice Stitch. First step is a Cross Stitch over 4 threads in F530. Second step uses F5. See Diagram #1.

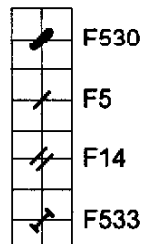
The following is worked on both sides of the center band. See Master Chart.

3. A single row of Tent Stitch in F14. Alternating Scotch Stitch (over 4 threads) in F533. A single row of Tent Stitch in F14. One row of Giant Rice (first step—F5, second step—F530). A single row of Slanted Gobelin (over 2 threads) in F533, followed by a row in F14. See Master Chart and color legend.

Photocopying of this design is invited.

Rainbow Gallery

7412 Fulton Ave., #5, North Hollywood, CA 91605



Production by Lightworks