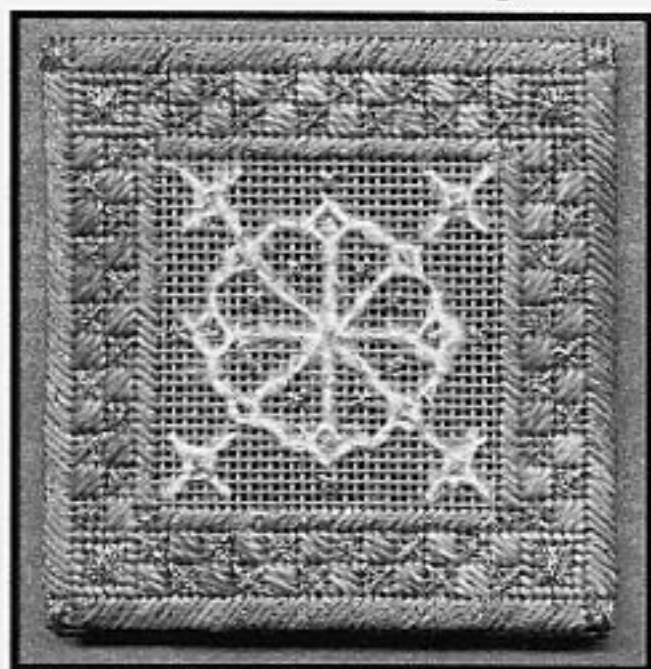






# Holiday Ornament 2000



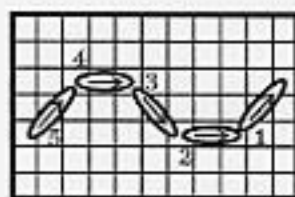
For Rainbow Gallery by:

LAURA J. PERIN DESIGNS

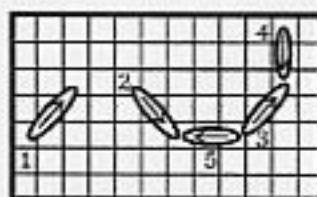
Symbol	Materials
	Rainbow Gallery's Fuzzy Stuff, FZ15 - White
	Treasure Braid, PB09 - Sky Blue
	Overture, V119 - Bouquet
	Pebbly Perle, P09 - Spode Blue
Design Count: 54 x 54 stitches Design Size: 3" x 3" on 18 ct. mono canvas (tan or dark color) Cut Canvas Size: 6" x 6"	

## General Instructions:

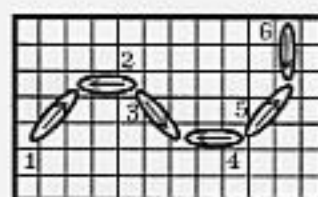
- To keep work taut, scroll bars are highly recommended.
- This design uses bright holiday colors, but please feel free to use other color combinations.
- Start all threads with a waste knot on top of fabric; end all threads by weaving them into back of existing work. Avoid carrying thread across back of open fabric.
- Use Backstitch, Double-Running Stitch or a combination of both (Running Backstitch) for working all blackwork.



Backstitch



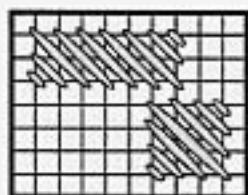
Double-Running Stitch



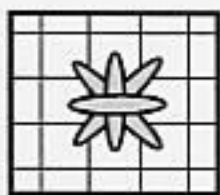
Running Backstitch

## STITCHING INSTRUCTIONS:

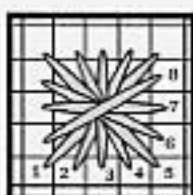
- Step 1. Blackwork Snowflake:** Mark center of canvas. With one strand of Fuzzy Stuff, begin at center and stitch blackwork snowflake. With 2 strands of Treasure Braid (or one strand doubled in needle) stitch all small crosses in snowflake design. Put French Knot in center. See Main Graph for stitch color and placement.
- Step 2. Inner Border Lines:** With one strand Pebbly Perle blended with one strand of Treasure Braid, stitch Diagonal Satin Stitch over two threads to create the thin borders. Stitch Smyrna Knot corners with 2 strands of Treasure Braid.
- Step 3. Checkerboard Border:** With one ply of varigated Overture, stitch checkerboard Scotch Stitches around border. Next, use 2 strands of Treasure Braid to stitch large cross stitches in alternate checker blocks, going over 3 threads.
- Step 4. Corner Squares:** Tent Stitch the small boxes in the corners of the checkerboard border. Inside, create small Rhodes Stitches with 2 strands of Treasure Braid.
- Step 5. Outer Border:** Blending one strand of Pebbly Perle and one strand of Treasure Braid together, work the outer border with Diagonal Satin Stitches over 3 threads. Make Rhodes Stitches in the corners with 2 strands of Treasure Braid. See Main Graph for stitch color and placement.



Diagonal Satin Stitch



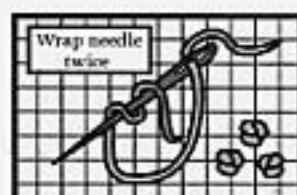
Smyrna Cross



Rhodes Stitch

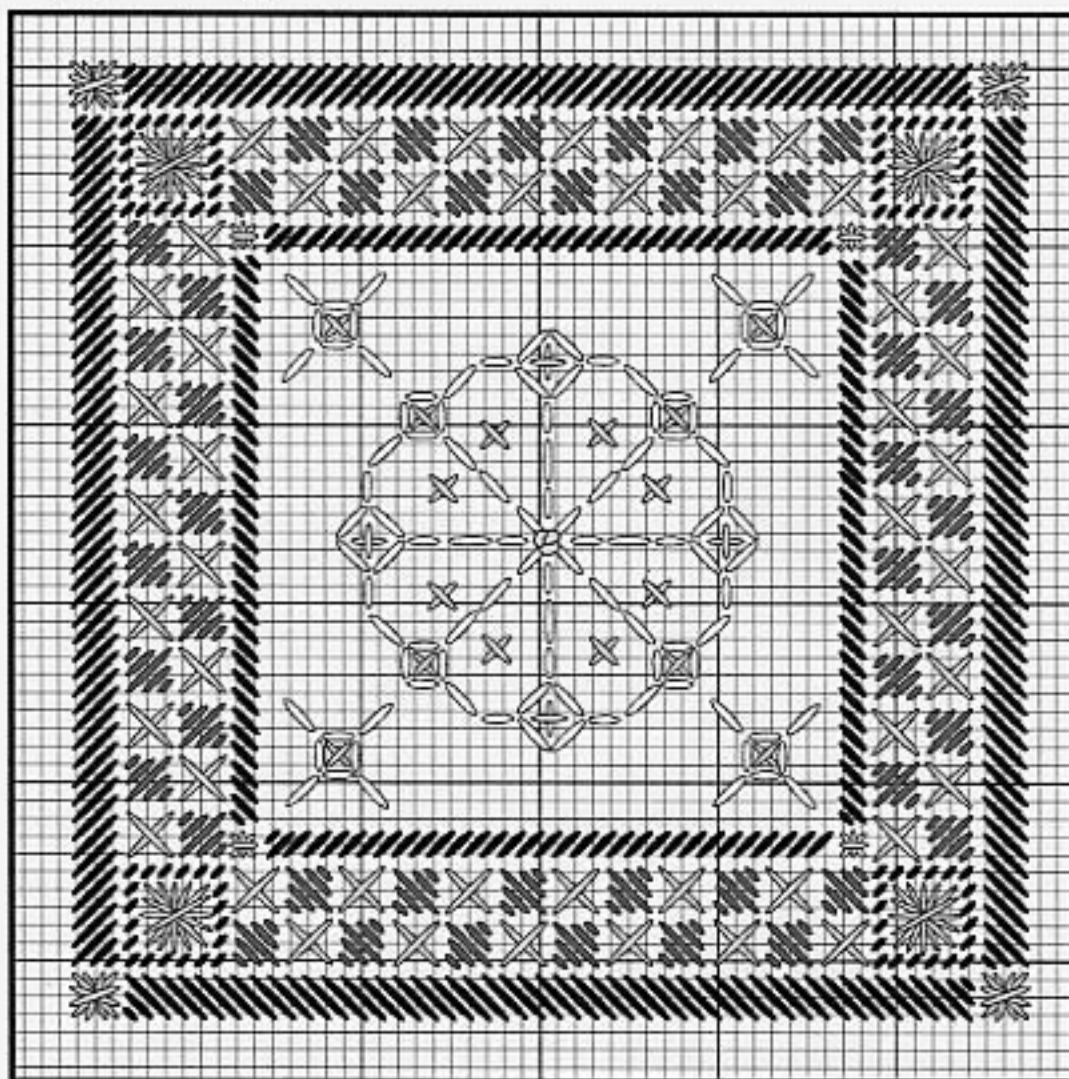


Scotch & Cross  
Stitch Border



French Knots

**Main Graph, showing all stitches**



*Be creative...  
use various types  
of threads...  
and have fun!*

- |  |  |
|--|--|
|  | <b>Rainbow Gallery's</b><br>Fluffy Stuff |
|  | Treasure Braid (metallic)                |
|  | Overture (varigated)                     |
|  | Pebble Perle (solid)                     |

For more information about **LAURA J. PERIN DESIGNS** please contact your local needlework shop or visit [www.laurajperindesigns.com](http://www.laurajperindesigns.com) to see more designs.