

# TULIP TISSUE BOX COVER <sup>©1994</sup>

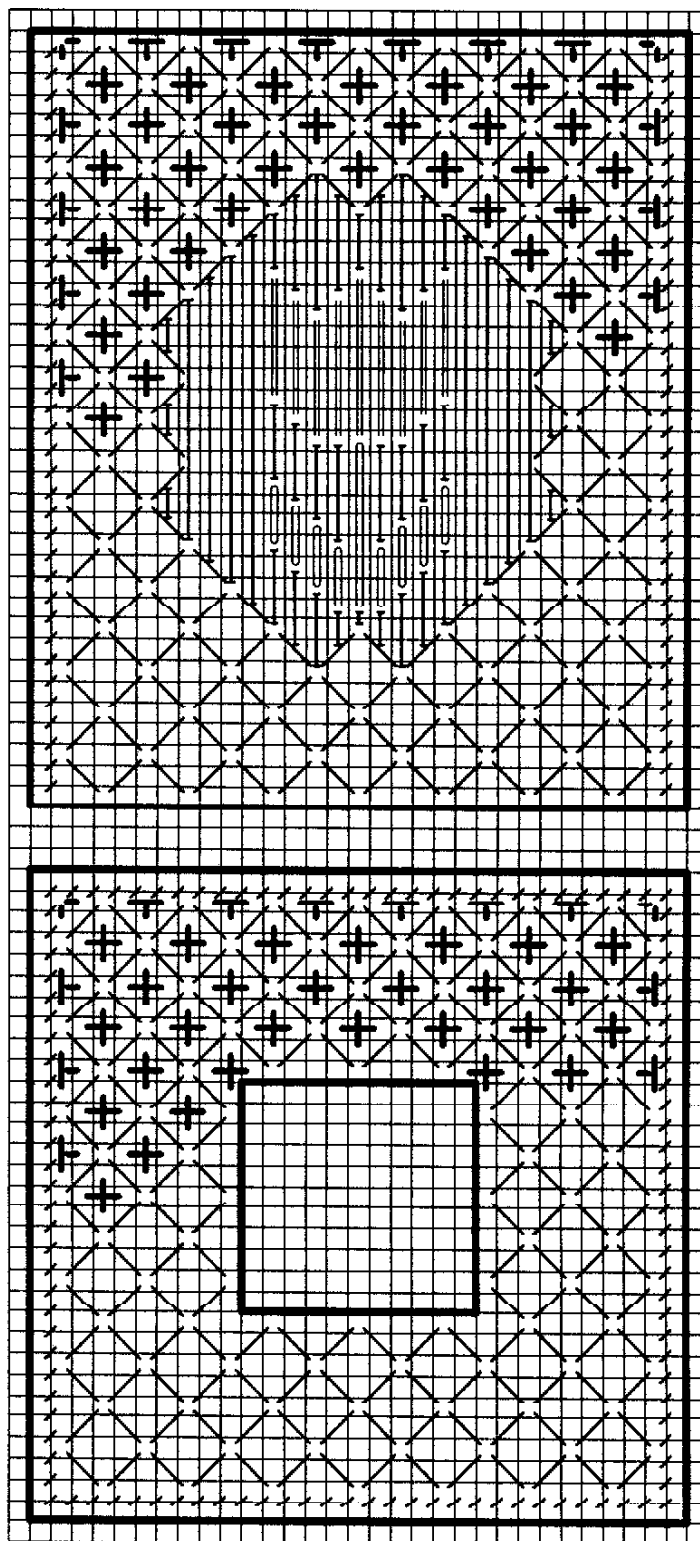
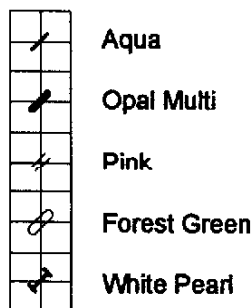
A Joan Green Plastic Canvas Design for Rainbow Gallery

This design fits 4 1/2" x 4 1/2" x 5" box.

## MATERIALS:

- 1 1/4 sheets—#7 Mesh Plastic Canvas
- #16 Tapestry Needle
- Plastic Canvas Metallic 7 Yarn by Rainbow Gallery
  - 3 yds—PC8 Pink
  - 22 yds—PC9 Opal Multi
  - 14 yds—PC10 White Pearl
  - 2 yds—PC17 Forest Green
- Worsted Weight Yarn
  - 32 yds—Aqua

1. Cut four pieces of canvas (31 holes x 37 holes) for sides. Cut one piece (31 holes x 31 holes) for top. Carefully trim away the center square area for the tissue opening.
2. Work top piece and outer portions of sides in diagonal stitches as shown on the chart, making Continental Stitches along edges where indicated. Complete by making Upright Cross Stitches in the centers using the Opal Multi yarn. Continue to fill in background pattern as established.
3. The tulip portions of the design are worked entirely in long straight stitches carrying the yarn clear around the back side for best coverage. Be careful not to let yarn become twisted—it should lay flat for the best effect.
4. Overcast the tissue opening with Opal Multi and sew the entire box together using Opal Multi yarn. Overcast the entire bottom edge of the box with the Aqua worsted weight yarn.



**Metallic Yarn Source:**  
 Designs by Joan Green  
 3897 Indian Ridge Woods  
 Oxford, OH 45056-9481  
 e mail: [designsjg@aol.com](mailto:designsjg@aol.com)

led.  
 #5, North Hollywood, CA 91605

Production by Lightworks