

SNOW-CAPPED CHRISTMAS TREE ORNAMENT ©1994

A Joan Green Plastic Canvas Design for Rainbow Gallery

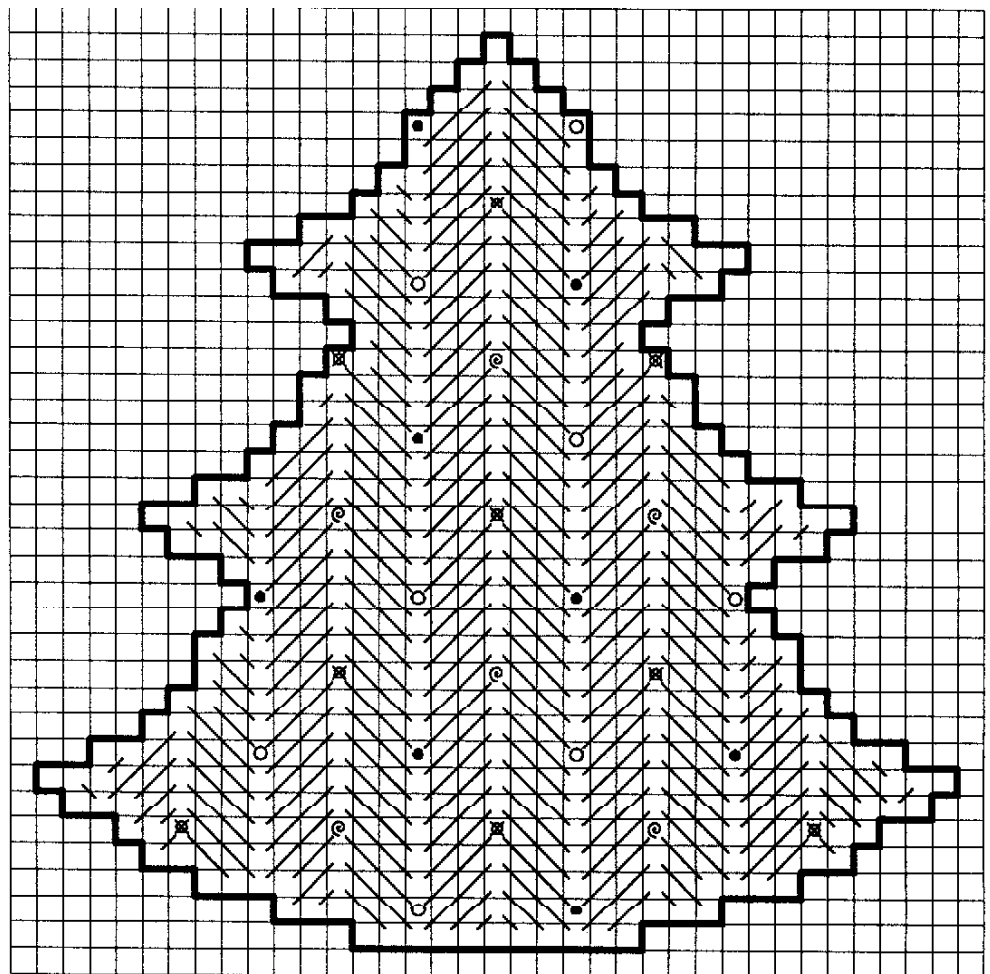
MATERIALS

1/4 sheet—#7 Mesh Plastic Canvas
 #16 Tapestry Needle
 Star-shaped faux jewel or gold charm

Plastic Canvas Metallic 7 by Rainbow Gallery
 10 yds—PC17 Forest Green
 2 yds—PC10 White Pearl
 1 yd each—PC5 Red, PC8 Pink, PC18 Dark Gold,
 PC19 Blue

1. Cut one piece, 35 holes x 35 holes, and trim according to dark outer lines of chart.
2. Work tree in rows of Slanting Gobelin, noting direction of stitches. Overcast the bottom edge of the tree and the small underside portions of the branches with Forest Green. Overcast remaining edges with White Pearl.
3. Make French Knots with the four colors for tree decorations, wrapping yarn twice around the needle for larger knots. Cut a 7" piece of Dark Gold, form a loop and glue to the top back side for a hanger. Glue the charm or star jewel to the top of the tree.

/	Forest Green
○	Pink French Knot
@	Dark Gold French Knot
⊠	Red French Knot
●	Blue French Knot



Photocopying of this design is invited.

Rainbow Gallery

7412 Fulton Ave., #5, North Hollywood, CA 91605

Metallic Yarn Source:
 Designs by Joan Green
 3897 Indian Ridge Woods
 Oxford, OH 45056-9481
 e mail: designsjg@aol.com

Production by Lightworks