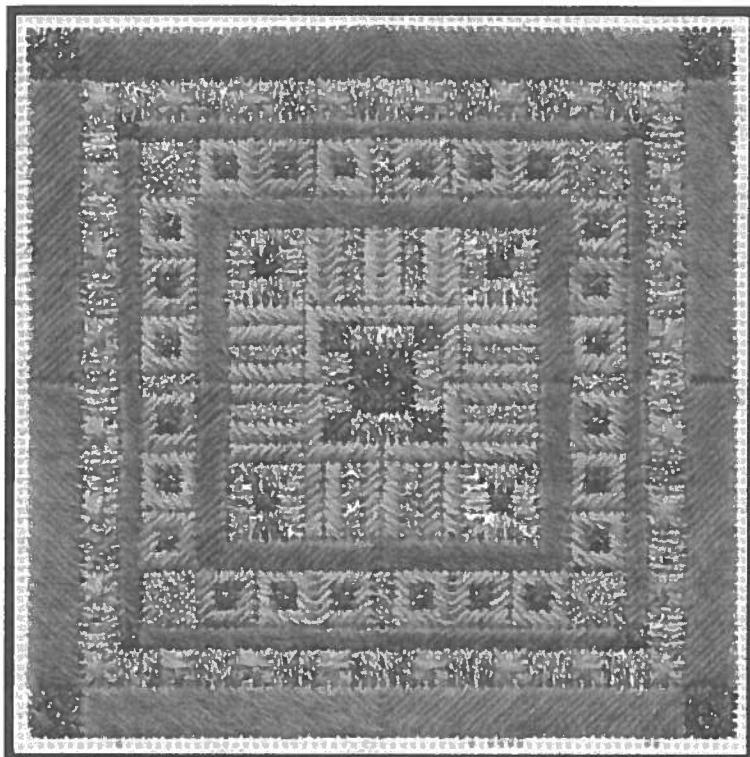


Autumn Square

For Rainbow Gallery by:

LAURA J. PERIN DESIGNS



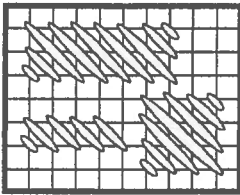
Symbol	Materials
	Rainbow Gallery's:
	Treasure Chest, TC05 - Tropic Gold
	Nordic Gold, ND14 - Copper
	Gold Rush 18, GD26C - Royal Blue
	Matte 18, M304 - Lilac
	Matte 18, M246 - Dark Blue Violet
Design Count: 72w x 72h stitches Design Size: 4' x 4" on 18 ct. mono canvas (eggshell or pale complementary color) Cut Canvas Size: 6' x 6'	

General Instructions:

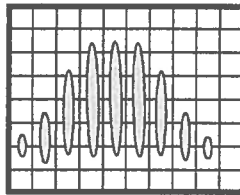
- To keep work taut, scroll bars are highly recommended.
- Please experiment with different color combinations, as well as different thread types. For instance, you can use #5 pearl cotton threads instead of the Matte 18 threads mentioned above.
- Start all threads with a waste knot on top of fabric; end all threads by weaving them into back of existing work. Avoid carrying thread across back of open fabric.
- *NOTE: All stitching in this design is done with ONE STRAND of each type of thread.*

STITCHING INSTRUCTIONS:

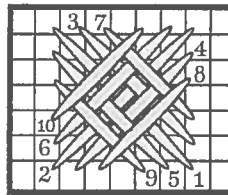
- Step 1. Center Block:** Mark center of canvas. With 1 strand of Gold Rush 18, work Waffle Stitch at center, going over 6 threads; work corner blue squares. With 1 strand Treasure Chest, work Straight Stitches around blue center. With 1 strand lilac Matte 18, Diagonal Satin Stitch around center square, then work chevron rows radiating out to sides. In-between chevron rows, use 1 strand Nordic Gold to create Cross Stitch Rows. Put small blue Smyrna Stitches in corner centers, then use Treasure Chest to Straight Stitch sparkling corner squares.
- Step 2. Middle Band:** Work border with dark blue violet Matte 18, going over 3 threads of canvas. With 1 strand Nordic Gold, make Waffle Stitches in corners. Fill rows with alternating squares of lilac Matte 18. Put a Cross Stitch Row at center of each band. Work a row of Diagonal Satin Stitches along outer edge of middle band, using dark blue violet Matte 18. Put a small Smyrna Stitch in each corner using Gold Rush 18.
- Step 3. Outer Border:** With 1 strand lilac Matte 18, work a row of large Smyrna Stitches, going over 4x4 threads, and skipping every 4 threads. In-between Smyrnas, use Treasure Chest to Straight Stitch along the row. Finally, work the wide outer border with 1 strand dark blue violet Matte 18, going over 5 threads of canvas. At corners, work a Waffle Stitch out of royal blue Gold Rush 18.



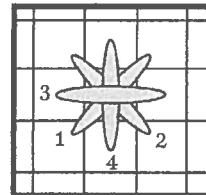
Diagonal Satin Stitch



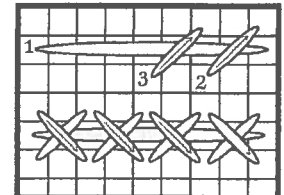
Straight Stitch



Waffle Stitch

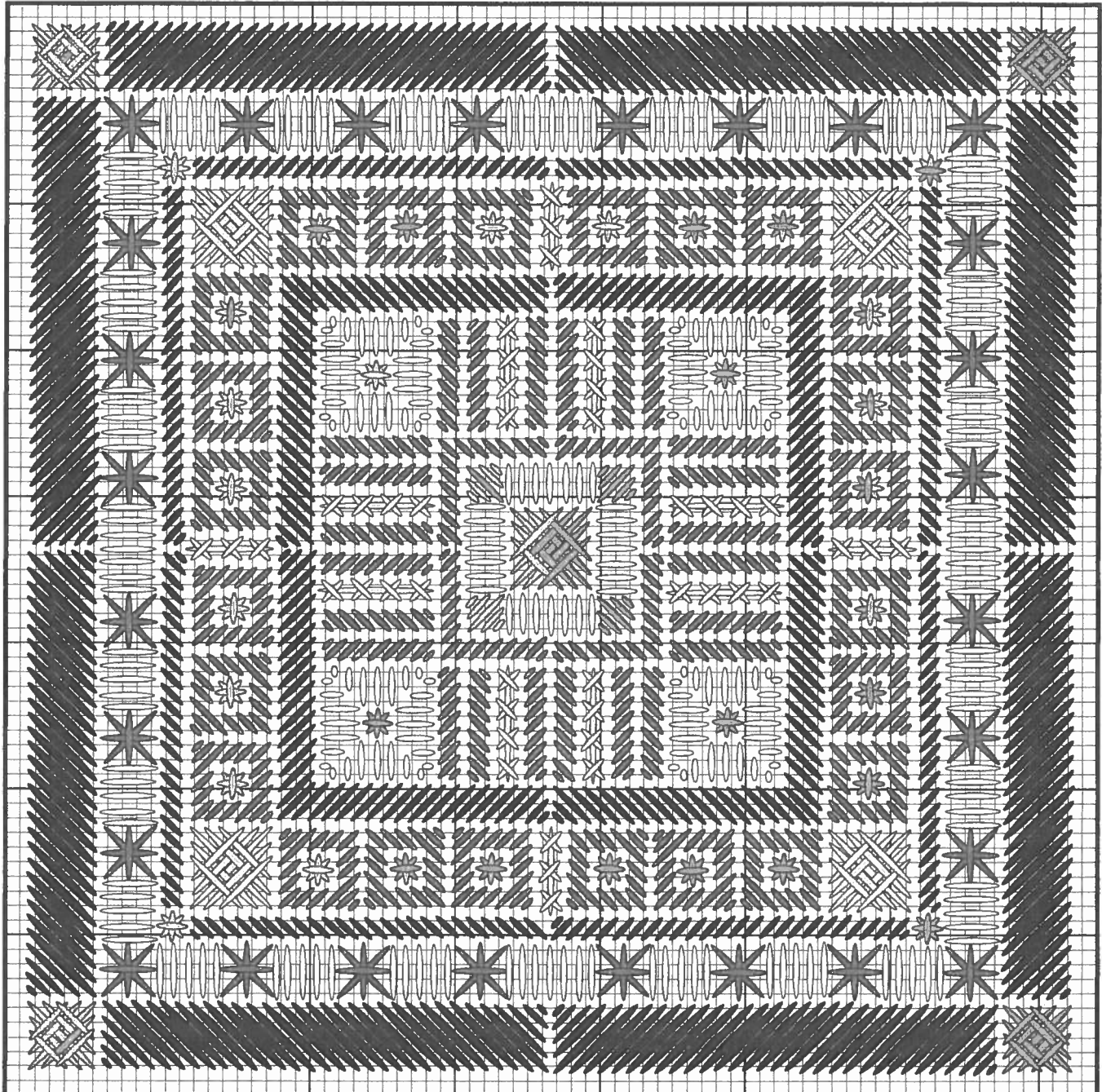


Smyrna Stitch




Cross Stitch Row

Main Graph, showing all stitches



Be creative...
 use various types
 of threads...
 and have fun!

Rainbow Gallery's:

- | | |
|--|---|
|  Treasure Chest, TC05 - Tropic Gold |  Matte 18, M304- Lilac |
|  Nordic Gold, ND14 - Copper |  Matte 18, M246 -Dk Blue Violet |
|  Gold Rush 18, GD26C - Royal Blue | <i>NOTE: Use one strand of all threads.</i> |