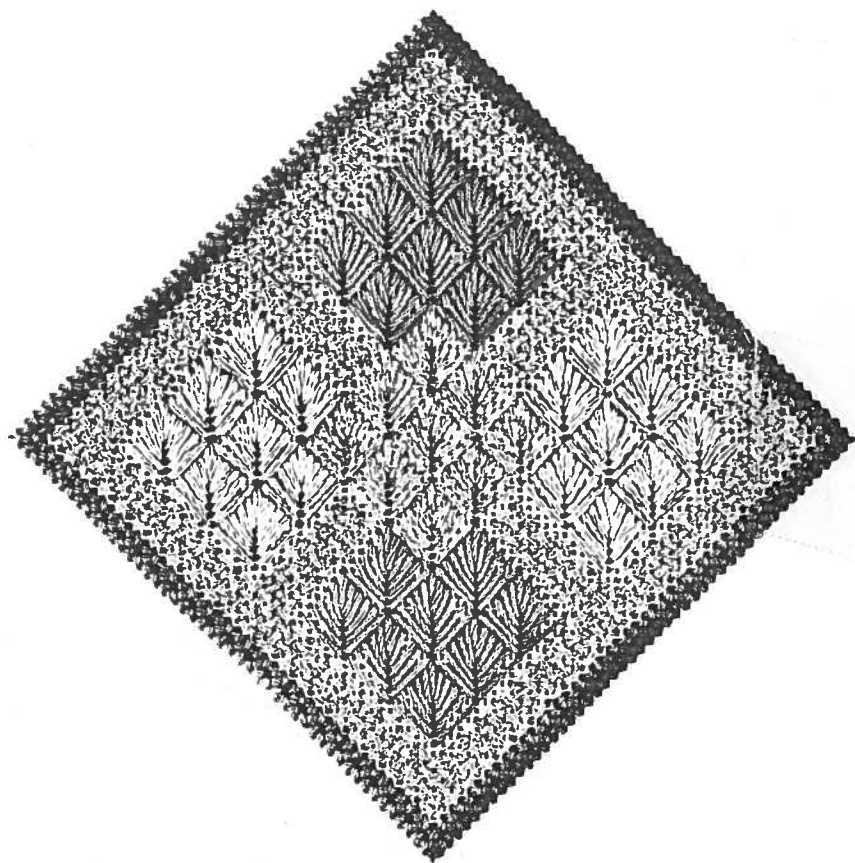


# ENLOE DIAMONDS<sup>©1991</sup>

## A Joan Lohr Design for Rainbow Gallery



To work as companion to Joan Lohr's  
**MALTESE CROSS ORNAMENT**,  
see alternate on page 2.

8" x 8"—#18 White Mono Canvas  
(Finished size 5½" x 5½")

1 Card Pebbly Perle™—P22 (Hot Pink)  
1 Card Cresta d'Oro™—C19 (Pale Pink)  
1 Card Fiesta!—S709 (Light Pink)

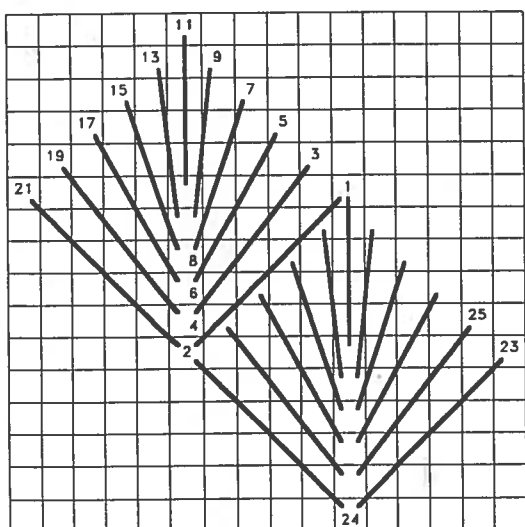
### Alternate Color Schemes:

1 Card Pebbly Perle™—P09 (Dark Blue)  
1 Card Tiara—T111 (Royal Blue)  
1 Card Neon Rays™—N59 (Royal Blue)

1 Card Pebbly Perle™—P02 (White)  
1 Card Tiara—T117 (White Pearl)  
1 Card Fiesta!—S702 (White)  
Pink or blue canvas

1 Card Pebbly Perle™—P16 (Silver)  
1 Card Tiara—T103 (Silver)  
1 Card Neon Rays™—N91 (Silver)

Or pick your own.

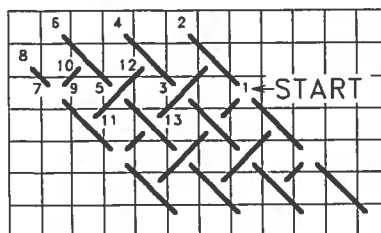


**LEAF STITCH**

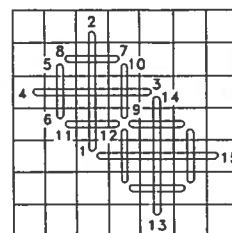
### 1. MODIFIED LEAF STITCH

- Begin with upper set of 8 leaf stitches (light lines), using **Pebbly Perle**. Work in diagonal rows. See master chart for placement.
- Center set is **Cresta d'Oro** or 2 ply **Tiara**.
- Left and right sides (heavy lines) use **Neon Rays** or 3 ply **Fiesta!**. Follow chart carefully.

- DIAGONAL WEAVING**—Start at circle marked on master chart. Use same metallic as Leaf set B. Compensate to follow diamond shape. Turn canvas a quarter turn at each point of diamond and continue pattern.



**DIAGONAL WEAVING**



**STRAIGHT  
RICE**

- STRAIGHT RICE**—Begin at top of outer border using **Pebbly Perle**. Work clockwise around Diagonal Weaving.