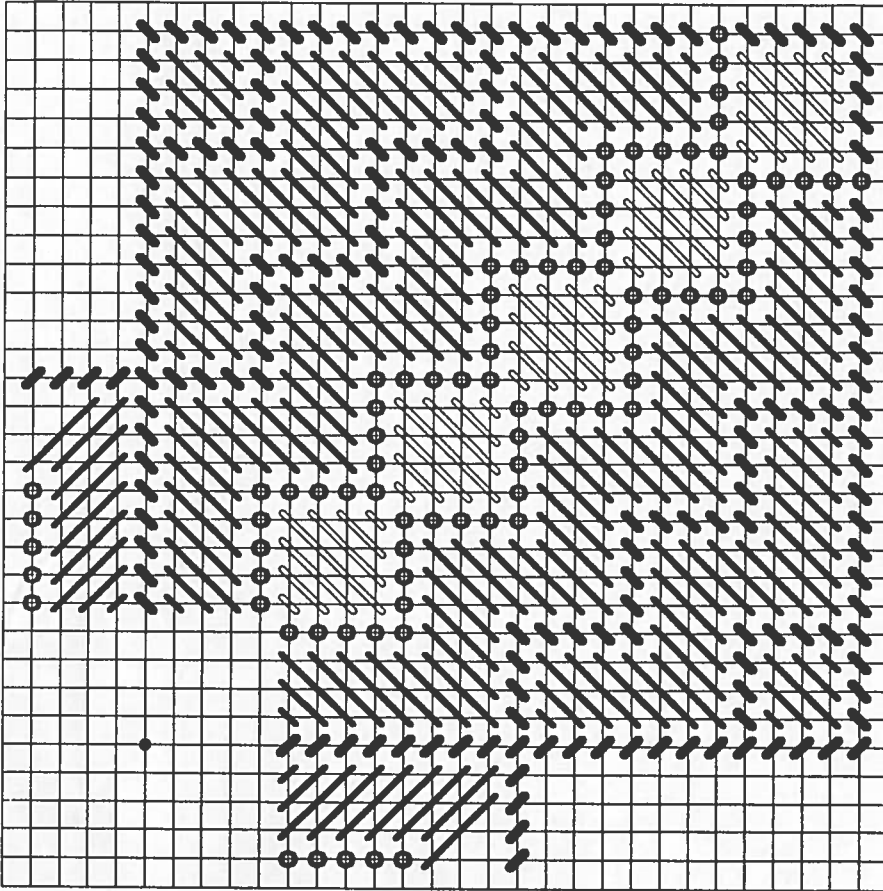


MYSTICAL STAIRS^{©1991}

A Carol Mullane Design for Rainbow Gallery

8" x 8" — #18 Mono Canvas
 (Finished size 27/8" square)
 1 Card Overture™

1 Card Neon Rays™
 1 Card Fyre Werks™
 1 Card Matte 18 or Pebbly Perle™



Suggested Color Schemes:

Neon Rays — N09 Purple
 Fyre Werks — F37 Aqua
 Overture — V28 Lagoon
 Matte 18 — M563 Teal

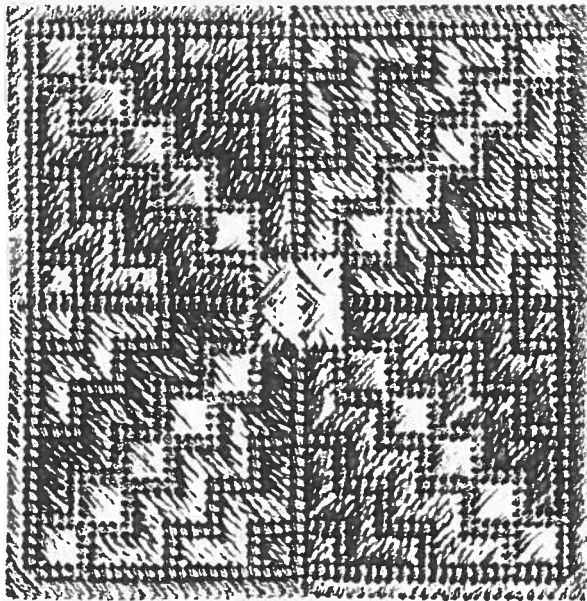
Neon Rays — N38 Spruce Green
 Fyre Werks — F31 Black
 Overture — V65 Tahoe
 Pebbly Perle — P23 Jade

Neon Rays — N04 Mauve
 Fyre Werks — F42 Pale Blue
 Overture — V35 Wild Berries
 Pebbly Perle — P26 Cerise

Neon Rays — N63 Light Aqua
 Fyre Werks — F5 Silver
 Overture — V78 Waterfall
 Pebbly Perle — P23 Jade

Or select your own colors.

4	7	15	23	31	30	22	14	6	2
12									9
20									17
28									25
36									33
29									32
21									24
13									16
5									8
1	10	18	26	34	35	27	19	11	3



1. Begin in center with a 36" length of Neon Rays. Secure with an away knot. Work Waffle stitch. See count at right.
2. Stitch Scotch stitches in Neon Rays (ovals on chart). These radiate from the corners of the center Waffle. (Design may be enlarged by adding additional Scotch stitch sections.)
3. Outline Scotch squares with Fyre Werks (circles on chart).
4. Work one Byzantine area in 1 ply Overture (thin lines).
5. Outline Byzantine area with Continental stitches (heavy lines) in Pebbly Perle or Matte 18.

6. Continue Byzantine with Continental stitch outline as in #4 and #5 above until quarter is finished. Turn master chart quarter turns to complete entire design.

Permission granted for shop owners and guilds to copy. ©1991 Rainbow Gallery

Production by Lightworks
 (714) 892-9124