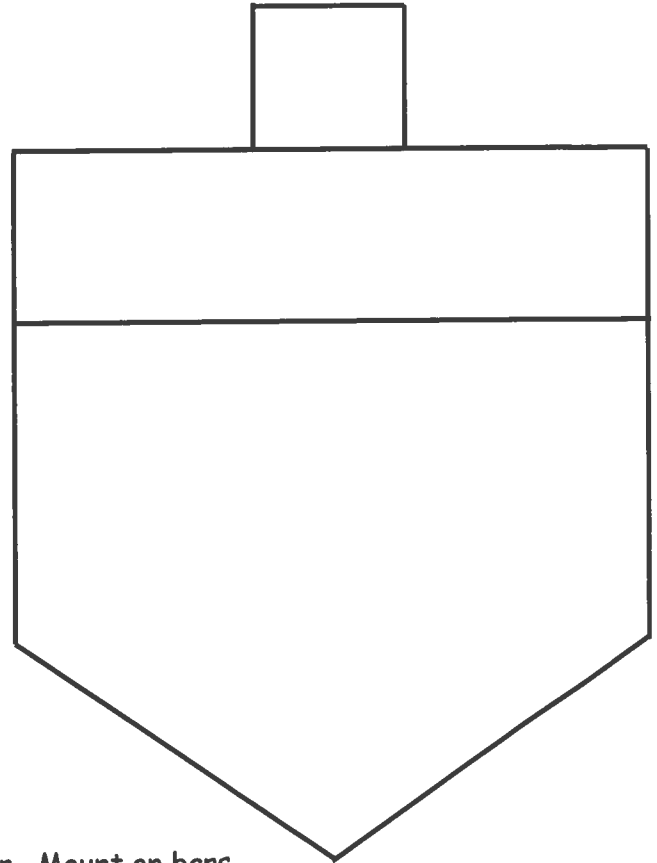


Eight Nights Of Chanukah

A unique design series by Marla Pelz of MAP Designs

Night One



Materials

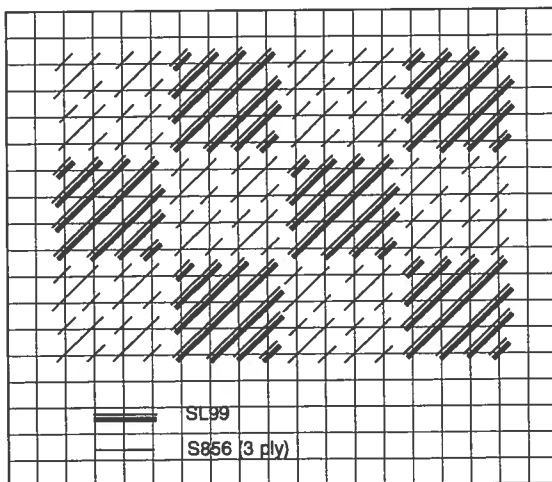
8"x8" white 18 mono
canvas
stretcher bars to fit
Blue Invisible Pen or
Permanent Marker

1 Card of the Following:

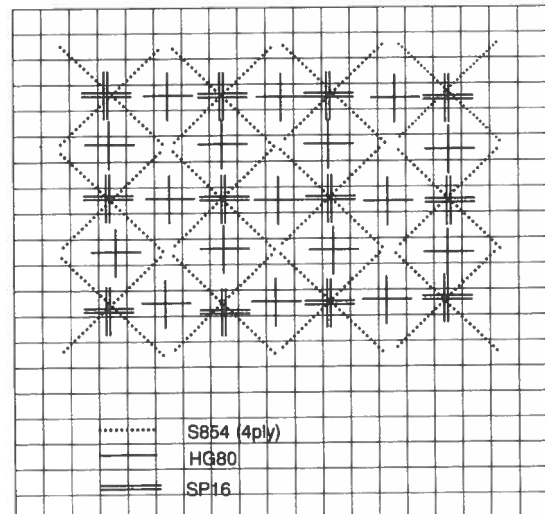
Splendor S858-medium navy
Splendor S854-blue
Splendor S856-sky blue
Silk Lame SL99-classic blue
Silk Lame Petite SP16-navy
Treasure Braid HG80-white pearl

Stitching Instructions

1. Trace outline of dreidel shape onto canvas with marker. Mount on bars.
2. Basketweave handle in S858, 4 ply. This area is 16 threads wide x 14 threads high.
3. Stitch band in Scotch/Mosaic combo. This area should be 16 threads high x 60 threads wide, centered under the handle.
4. Stitch main part of dreidel in Combination Crosses.
5. Finish as flat back shape with sleeve in handle so all dreidels can be strung onto cord and displayed.



Scotch/Mosaic Combo

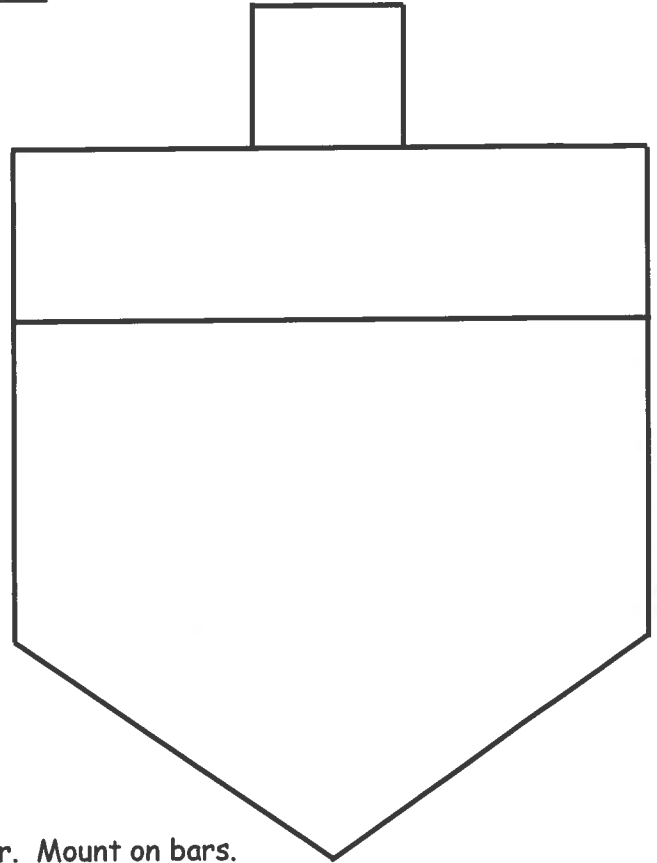
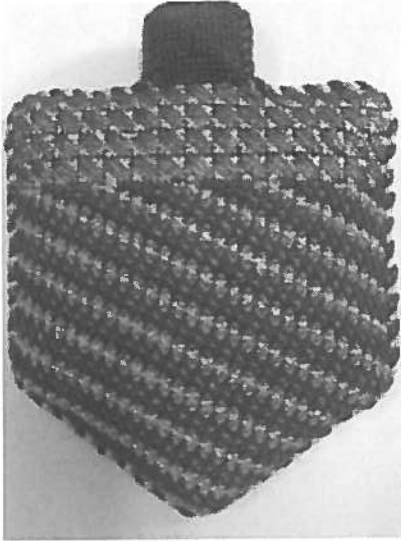


Combination Crosses

Eight Nights Of Chanukah

A unique design series by Marla Pelz of MAP Designs

Night Two



Materials

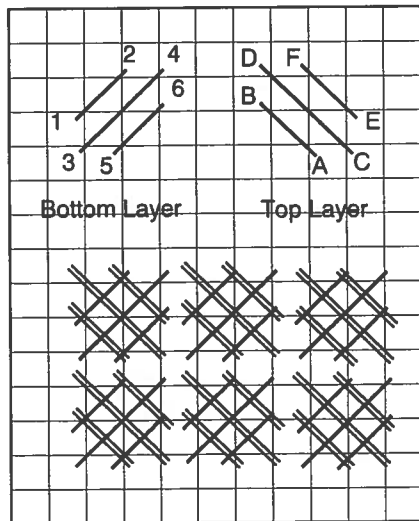
8"x8" white 18 mono
canvas
stretcher bars to fit
Blue Invisible Pen or
Permanent Marker

1 Card of the Following:

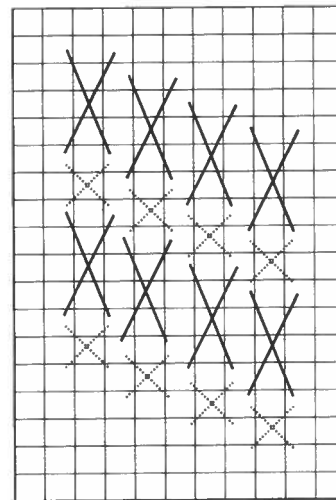
Neon Rays N67-dark teal
Fyre Werks FT35-smoke gray
Fyre Werks FT59-tawney gold
Petite Velvet V617-peacock blue
Crystal Braid CR15-blue pearl

Stitching Instructions

1. Trace outline of dreidel shape onto canvas with marker. Mount on bars.
2. Basketweave handle in N67. This area is 16 threads wide x 14 threads high.
3. Stitch band in Bound Cross with FT35 on the bottom layer and FT59 on the top layer. This area should be 16 threads high x 60 threads wide, centered under the handle.
4. Stitch main part of dreidel in Flying Cross Variation with V617 for large crosses and CR15 for small crosses.
5. Finish as flat back shape with sleeve in handle so all dreidels can be strung onto cord and displayed.



Bound Cross

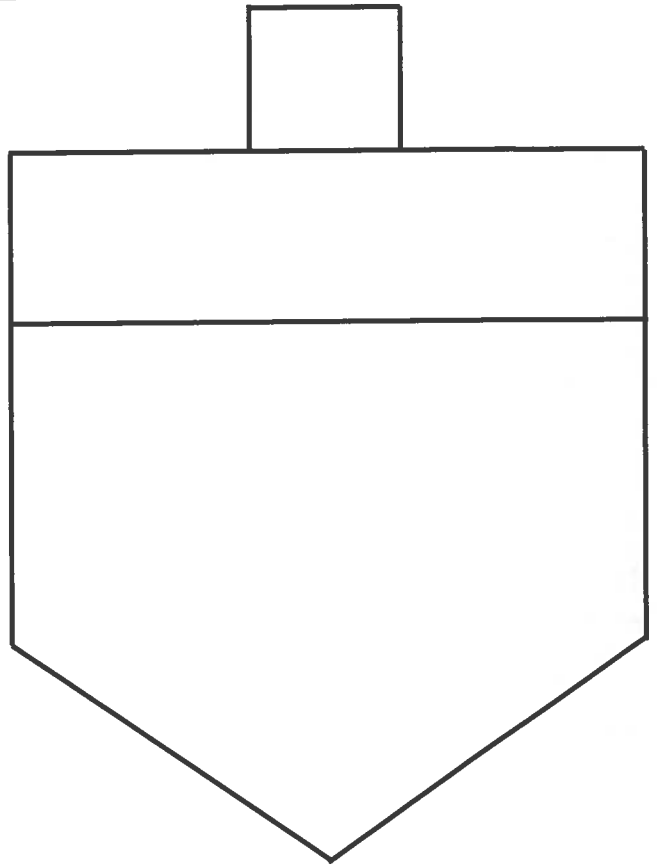
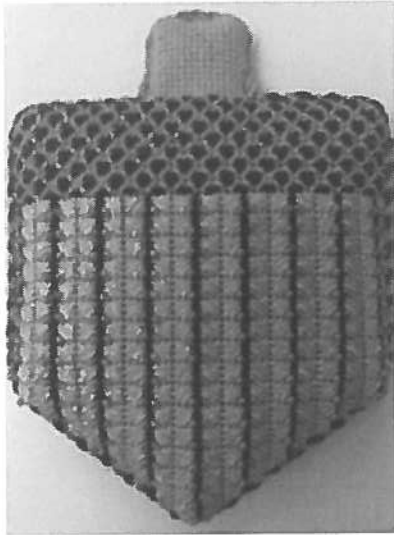


Flying Cross Variation

Eight Nights Of Chanukah

A unique design series by Marla Pelz of MAP Designs

Night Three



Materials

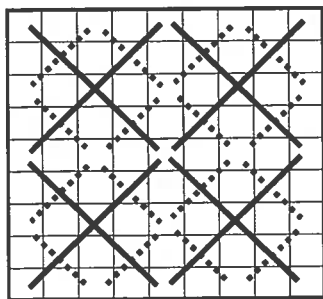
8"x8" white 18 mono canvas
stretcher bars to fit
Blue Invisible Pen or
Permanent Marker
Size 14 Gold beads

1 Card of the Following:

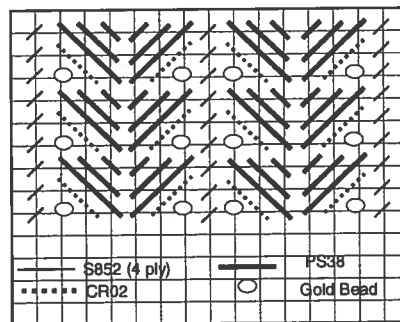
Crystal Braid CR02-baby blue pearl
Petite Sparkle Rays PS38-lite cornflower
Petite Very Velvet V683-dark chocolate
Splendor S909-goldenrod
Splendor S852-very dark brown
Treasure Braid TR247-awesome gold

Stitching Instructions

1. Trace outline of dreidel shape onto canvas with marker. Mount on bars.
2. Basketweave handle in S909 4 ply. This area is 16 threads wide x 14 threads high.
3. Stitch band in Rice Stitch with V683 on the bottom layer and TR247 on the top layer. This area should be 16 threads high x 60 threads wide, centered under the handle.
4. Stitch main part of dreidel in continental and Scotch Variation as per diagram.
5. Finish as flat back shape with sleeve in handle so all dreidels can be strung onto cord and displayed.



Rice Stitch

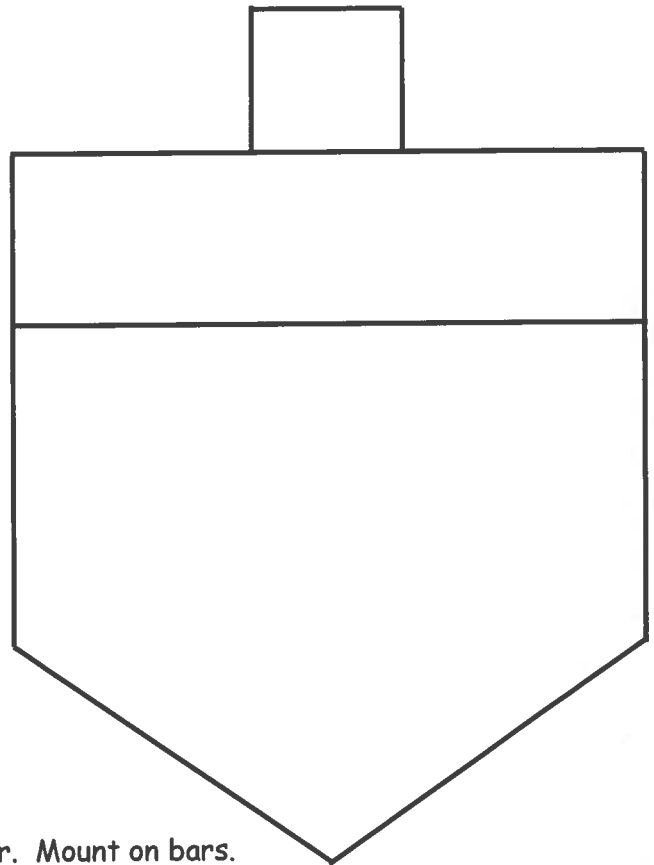
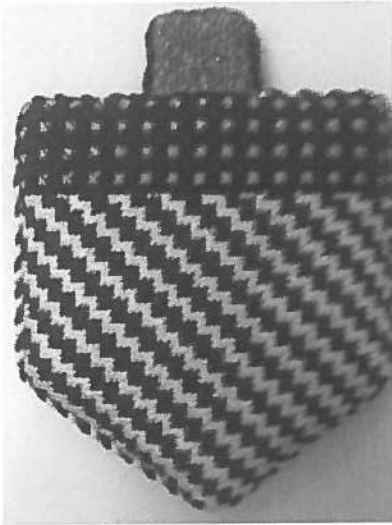


Scotch Variation

Eight Nights Of Chanukah

A unique design series by Marla Pelz of MAP Designs

Night Four



Materials

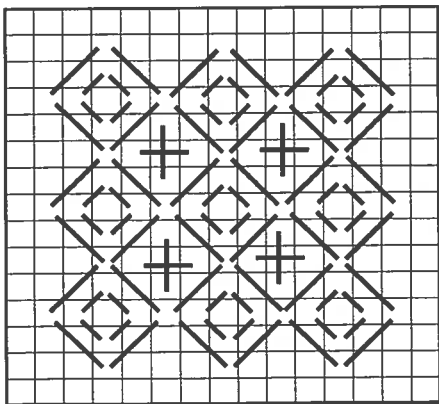
8"x8" white 18 mono
canvas
stretcher bars to fit
Blue Invisible Pen or
Permanent Marker

1 Card of the Following:

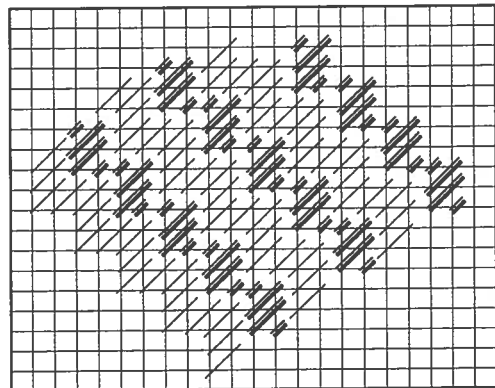
Neon Rays+ NP02-white
Silk Lame 18 SL119-blue sapphire
Silk Lame 18 SL183-gray stone
Treasure Braid TR693-gold
Petite Very Velvet V627-eggplant

Stitching Instructions

1. Trace outline of dreidel shape onto canvas with marker. Mount on bars.
2. Basketweave handle in SL183. This area is 16 threads wide x 14 threads high.
3. Stitch band in Alternating Mosaic Variation using V627 for mosaic and TR693 for upright cross. This area should be 16 threads high x 60 threads wide, centered under the handle.
4. Stitch main part of dreidel in Byzantine Cashmere Variation using NP02 for Byzantine and SL119 for Cashmere.
5. Finish as flat back shape with sleeve in handle so all dreidels can be strung onto cord and displayed.



Alternating Mosaic Variation

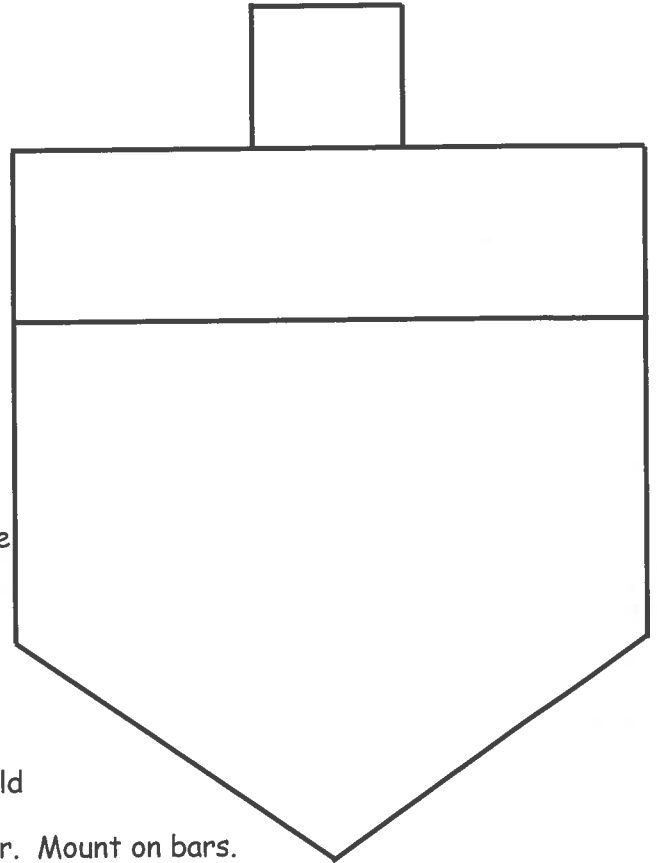


Byzantine and Cashmere

Eight Nights Of Chanukah

A unique design series by Marla Pelz of MAP Designs

Night Five



Materials

8"x8" white 18 mono canvas

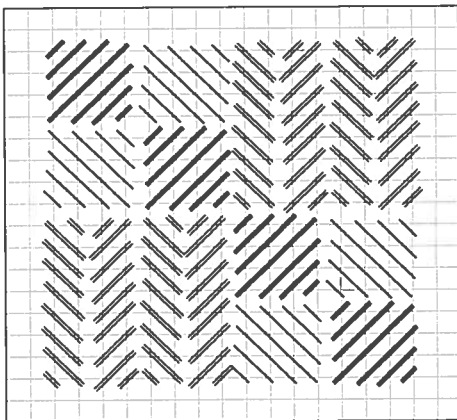
stretcher bars to fit
Blue Invisible Pen or
Permanent Marker

1 Card of the Following:

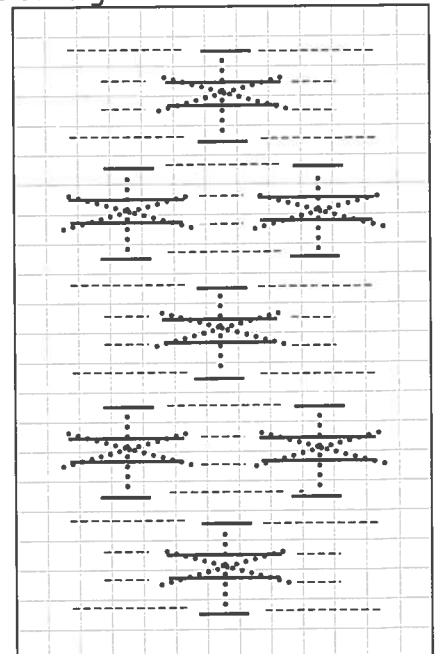
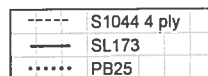
Pet. Sparkle Rays PS37-Turquoise
Silk Lane 18 SL23-Dk Lavender
Silk Lane 18 SL173-Pansy
Silk Lane 18 SL175-Honey Gold
Splendor S806-Magenta
Splendor S1044-Deep Aqua
Treasure Braid Pet. PB25-Old Gold

Stitching Instructions

1. Trace outline of dreidel shape onto canvas with marker. Mount on bars.
2. Basketweave handle in SL23. This area is 16 threads wide x 14 threads high.
3. Stitch band in Scotch Gobelin Combo using S806 and SL175 for alternating scotch and gobelin. This area should be 16 threads high x 60 threads wide, centered under the handle.
4. Stitch main part of dreidel in Horizontal Patchwork in threads indicated in diagram.
5. Finish as flat back shape with sleeve in handle so all dreidels can be strung onto cord and displayed.



Scotch Gobelin Combo

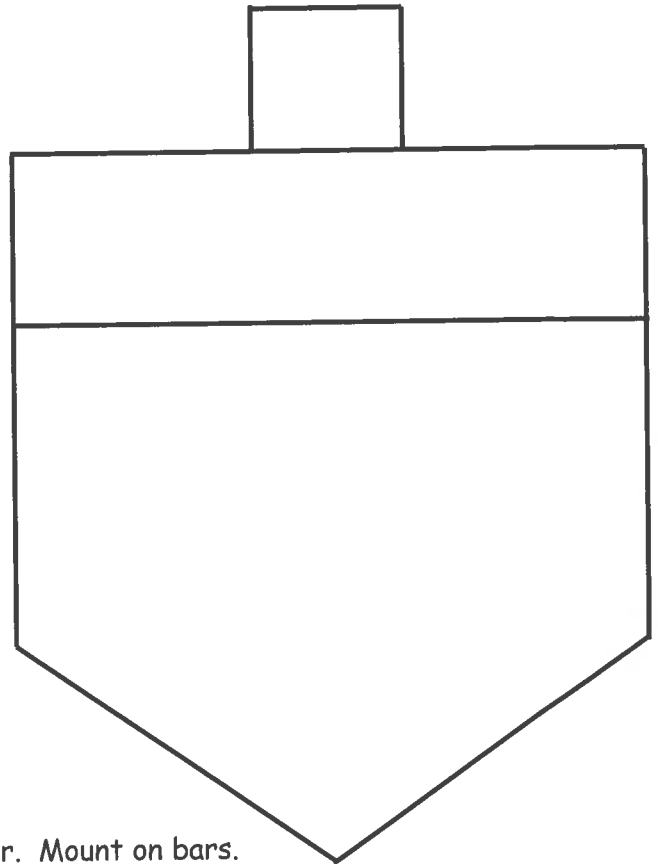


Horizontal Patchwork

Eight Nights Of Chanukah

A unique design series by Marla Pelz of MAP Designs

Night Six



Materials

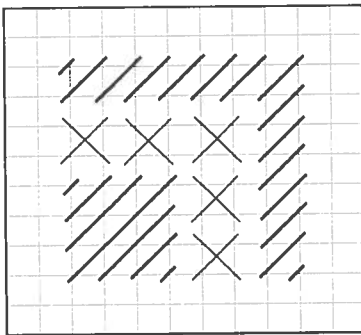
8"x8" white 18 mono
canvas
stretcher bars to fit
Blue Invisible Pen or
Permanent Marker

1 Card of the Following:

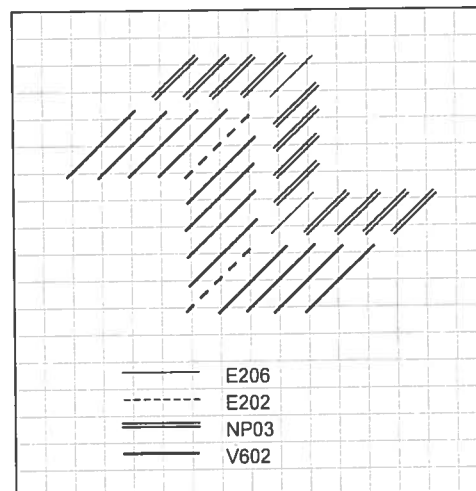
Entice E202-Snow White
Entice E206-Orchid
Neon Rays N39-Lite Beige
Neon Rays+ NP03-Pale Beige
Petite Very Velvet V602-White
Silk Lame 18 SL89-Blue Jeans
Silk Lame 18 SL147-Taupe

Stitching Instructions

1. Trace outline of dreidel shape onto canvas with marker. Mount on bars.
2. Basketweave handle in SL147. This area is 16 threads wide x 14 threads high.
3. Stitch band in Gobelin Cross Stitch Combo using SL89 for gobelin stitches and N39 for cross stitches. This area should be 16 threads high x 60 threads wide, centered under the handle.
4. Stitch main part of dreidel in Byzantine Variation in threads indicated in diagram.
5. Finish as flat back shape with sleeve in handle so all dreidels can be strung onto cord and displayed.



Gobelin Cross Stitch Combo

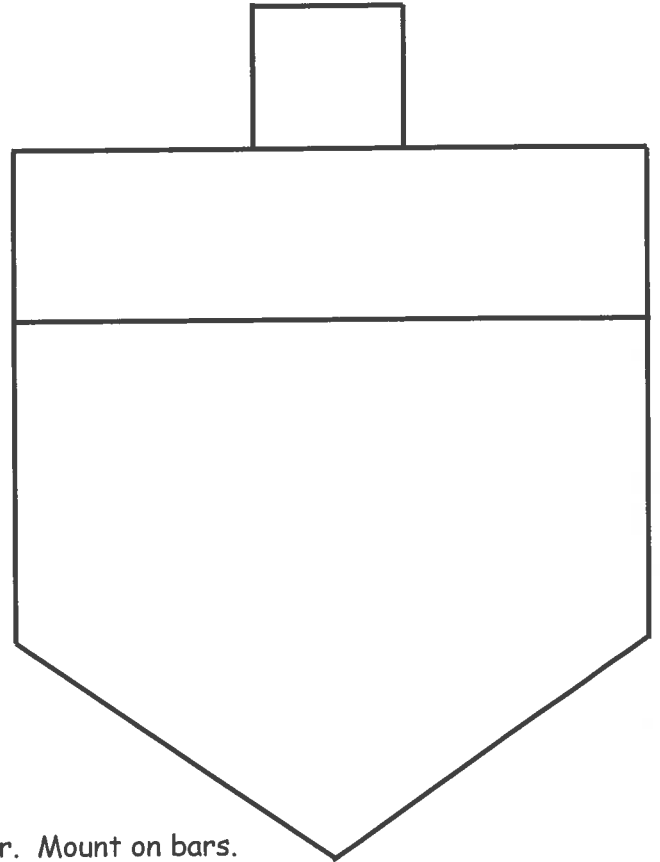


Byzantine Variation

Eight Nights Of Chanukah

A unique design series by Marla Pelz of MAP Designs

Night Seven



Materials

8"x8" white 18 mono
canvas

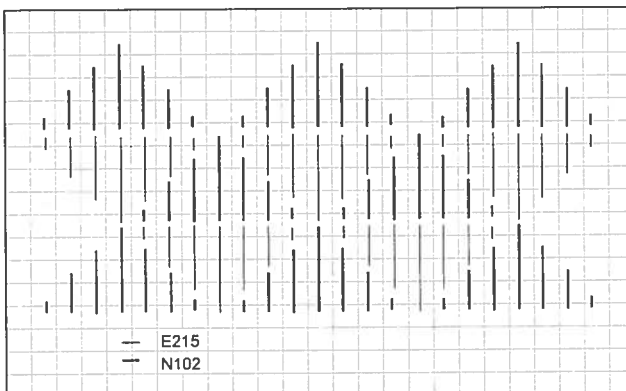
stretcher bars to fit
Blue Invisible Pen or
Permanent Marker

1 Card of the Following:

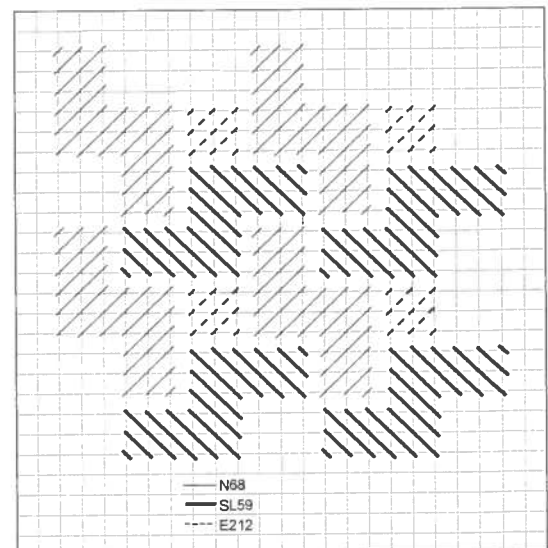
Entice E212-Navy
Entice E215-Grecian Gold
Neon Rays N68-Periwinkle
Neon Rays N102-Antique White
Silk Lane 18 SL59-Lilac
Splendor S1030-Med. Blue Violet

Stitching Instructions

1. Trace outline of dreidel shape onto canvas with marker. Mount on bars.
2. Basketweave handle in S1030, 4 ply. This area is 16 threads wide x 14 threads high.
3. Stitch band in Half Diamonds using E215 and N102. This area should be 16 threads high x 60 threads wide, centered under the handle.
4. Stitch main part of dreidel Alternating Byzantine in threads indicated in diagram.
5. Finish as flat back shape with sleeve in handle so all dreidels can be strung onto cord and displayed.



Half Diamonds

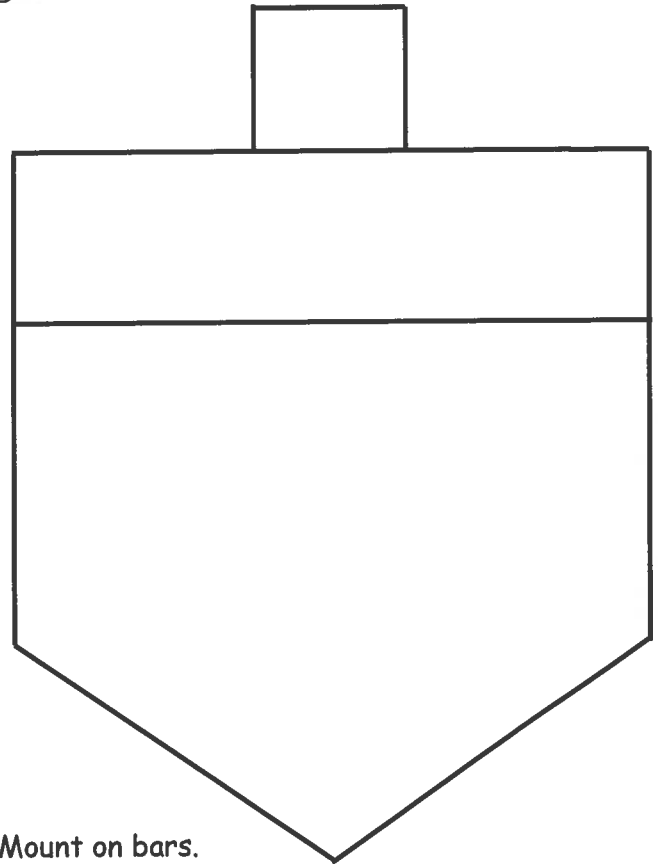


Alternating Byzantine

Eight Nights Of Chanukah

A unique design series by Marla Pelz of MAP Designs

Night Eight



Materials

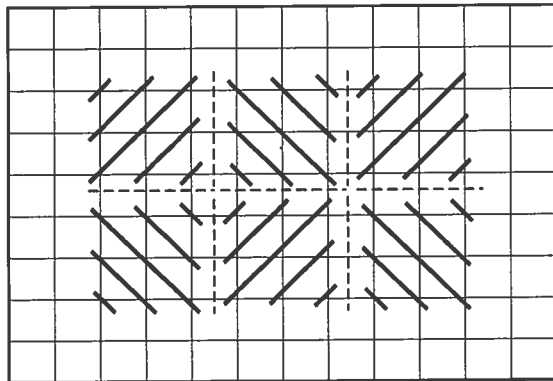
8"x8" white 18 mono
canvas
stretcher bars to
fit
Blue Invisible Pen or
Permanent Marker

1 Card of the Following:

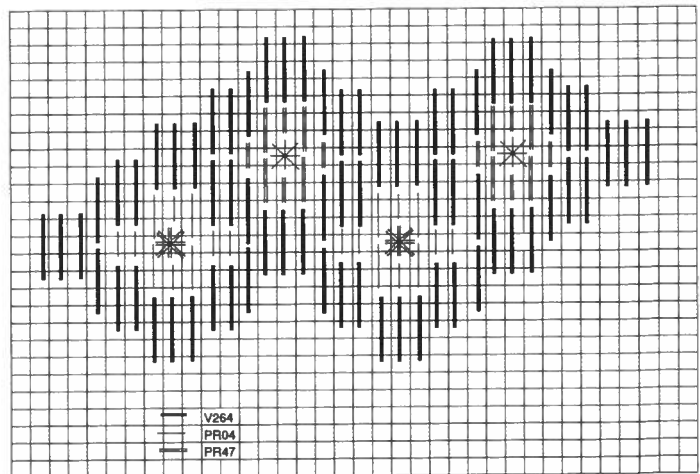
Entice E223-Forever Blue
Neon Rays+ NP103-Indigo Blue
Petite Treasure Ribbon PR04-Silver
Petite Treasure Ribbon PR47-
Awesome Gold
Petite Very Velvet V657-Gold
Very Velvet V264-Indigo Blue

Stitching Instructions

1. Trace outline of dreidel shape onto canvas with marker. Mount on bars.
2. Basketweave handle in NP103. This area is 16 threads wide x 14 threads high.
3. Stitch band Outlined Cushion Stitch using V657 for cushion stitch and E223 for outline. This area should be 16 threads high x 60 threads wide, centered under the handle.
4. Stitch main part of dreidel in Bargello in threads indicated in diagram.
5. Finish as flat back shape with sleeve in handle so all dreidels can be strung onto cord and displayed.



Outline Cushion



Bargello