

Sally's 2010 Heart Ornaments

Forever In My Heart #1 in a Series of 12



Materials

7" x 7" #18 Mono Metallic Canvas-White
Opalescent

#22 or #24 Tapestry needles

Stretcher bars to fit

Blue invisible pen or Zig Textile Marker

1 card of the following

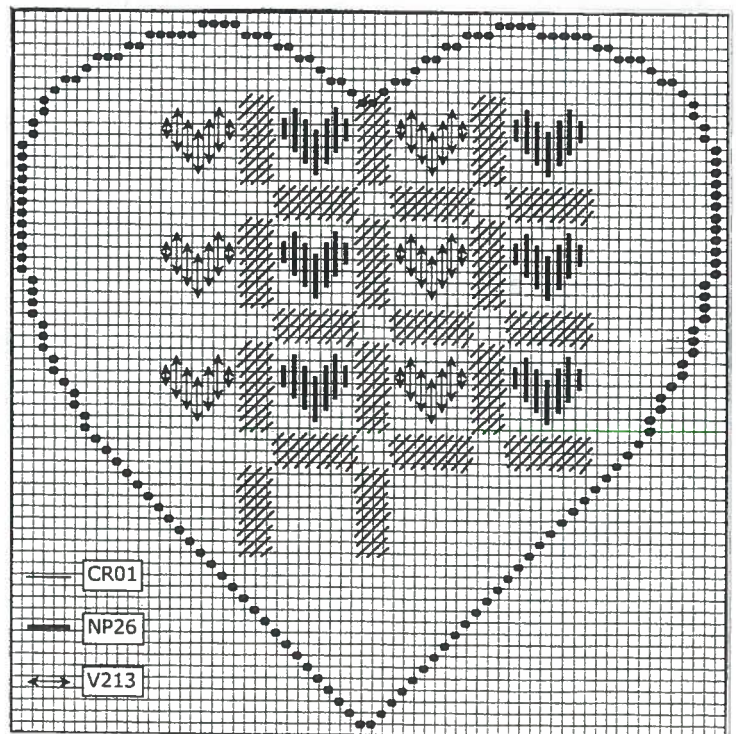
Crystal Braid CR01-White Pearl

Neon Rays® Plus NP26-Burgundy

Very Velvet® V213-Burgundy

Finished Size - 3 1/2" x 3 1/2"

1. Outline - Before mounting your canvas on stretcher bars trace heart shape on canvas with marker.
2. At center point begin with CR01 stitching vertical Cashmere Stitches. Work rows to the left and right filling in heart shape. Continue with the same stitch working in horizontal rows. Refer to chart for stitch and placement.
2. After all rows are completed fill in open squares with straight Gobelin hearts. Alternate each area with V213 and NP26. Refer to chart. Compensate stitches when necessary.



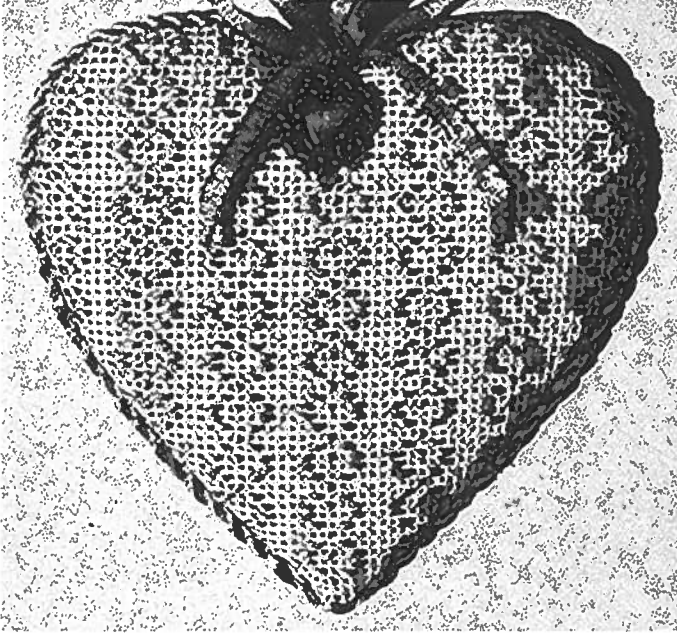
Finish as flat or stuffed ornaments.

Hearts may be done on different size canvas and in a variety of colors.

Be creative and have fun with them.

Sally's 2010 Heart Ornaments

Follow Your Heart #2 in a Series of 12



Materials

7" x 7" #18 Mono Metallic Canvas-White
Opalescent

#22 or #24 Tapestry needles

Stretcher bars to fit

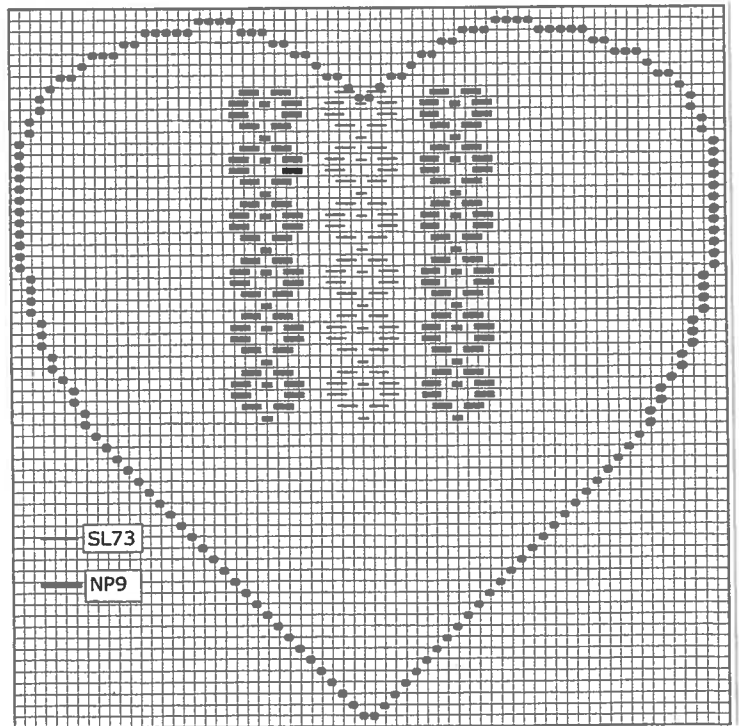
Blue invisible pen or Zig Textile Marker

1 card of the following

Silk Lame Braid #18 SL73-Pale Lavender Blue
Neon Rays® Plus NP92-Silver

Finished Size - 3 1/2" x 3 1/2"

1. Outline - Before mounting your canvas on stretcher bars trace heart shape on canvas with marker.
2. At center point of your heart shape begin with SL73 working each heart stitch in vertical rows. Alternate rows with NP92. Refer to chart for stitch and placement.
2. Continue rows until heart shape is filled. Compensate when necessary.



Finish as flat or stuffed ornaments.

Hearts may be done on different size canvas and in a variety of colors.

Be creative and have fun with them.

Sally's 2010 Heart Ornaments

Satin Hearts #3 in a Series of 12



Materials

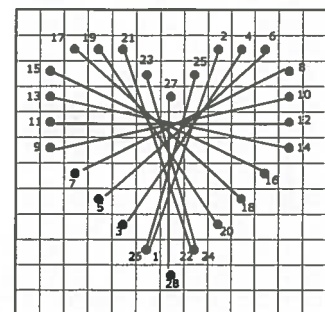
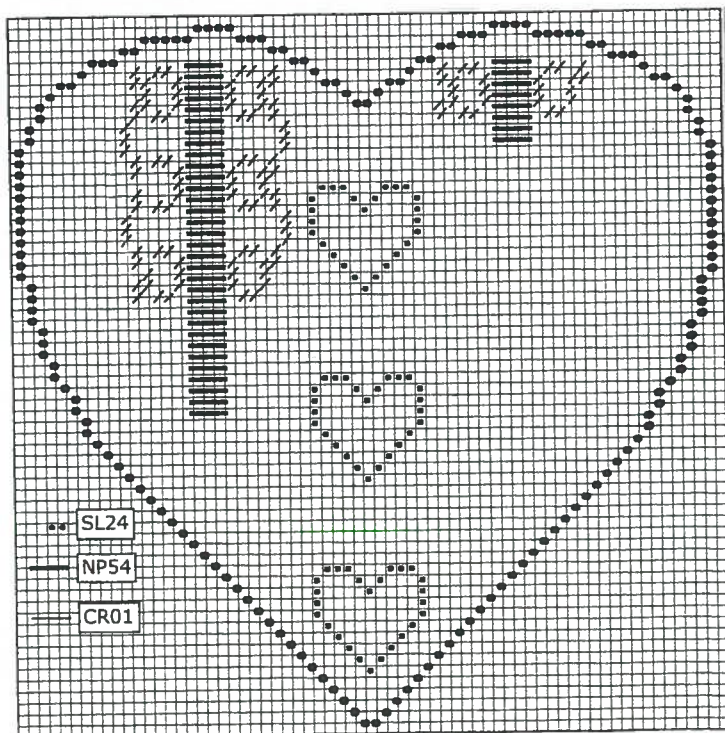
7" x 7" #18 Mono Metallic Canvas-White
Opalescent
#22 or #24 Tapestry needles
Stretcher bars to fit
Blue invisible pen or Zig Textile Marker

1 card of the following

Silk Lame Braid #18 SL24-Baby Pink
Neon Rays Plus NP54-Pale Blue
Crystal Braid CR01-White Pearl

Finished Size - 3 1/2" x 3 1/2"

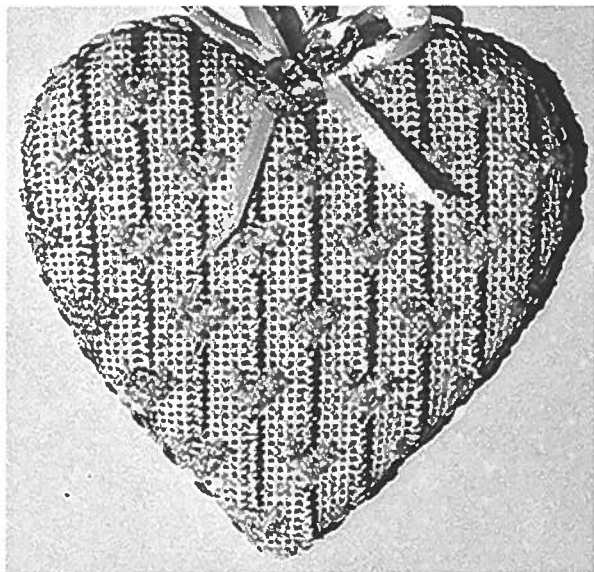
1. Outline - Before mounting your canvas on stretcher bars trace heart shape on canvas with marker.
2. From center point of the Rhodes Heart count down 15 threads and 1 thread the left using SL24. See chart for stitch count. Stitch 3 hearts.
2. Count over from Rhodes Hearts and begin with NP54 with straight stitches that create a satin ribbon look, finishing with lacy Tent Stitches using CR01. See chart for count. Fill in heart shape.



Finish as flat or stuffed ornaments.
Hearts may be done on different size canvas
and in a variety of colors.
Be creative and have fun with them.

Sally's 2010 Heart Ornaments

Hearts Delight #4 in a Series of 12



Materials

7" x 7" #18 Mono Metallic Canvas-White
Opalescent

#22 or #24 Tapestry needles

Stretcher bars to fit

Blue invisible pen or Zig Textile Marker

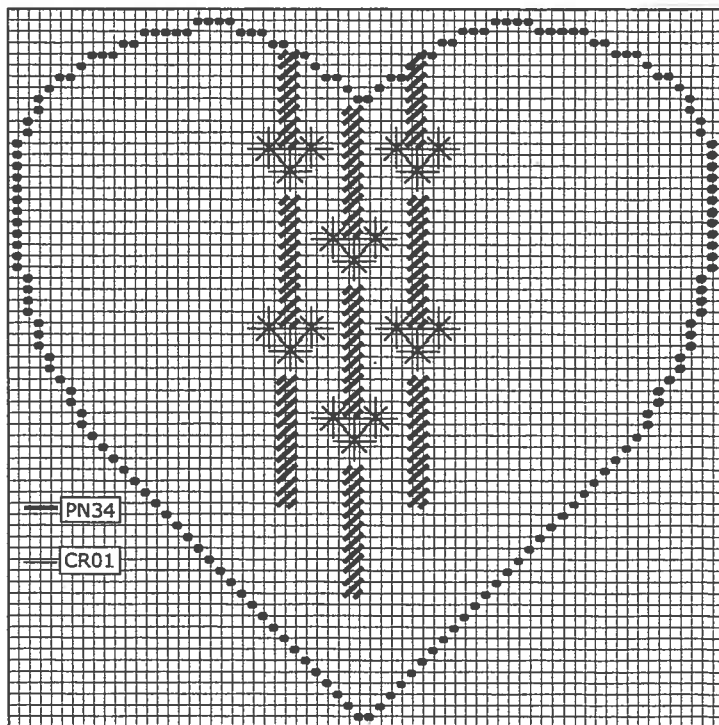
1 card of the following

Panache PN34-Lite Sky Blue

Crystal Braid CR01-White Pearl

Finished Size – 3 1/2" x 3 1/2"

1. Outline - Before mounting your canvas on stretcher bars trace heart shape on canvas with marker.
2. At center point of your heart shape stitch Elongated Cashmere stitches with PN34 working in a vertical row. See chart for placement.
3. In open areas, stitch three Double Straight Crosses using CR01.
4. Your next row of Elongated Cashmere stitches is staggered. Please refer to chart for placement. Alternate rows across until heart shape is filled. Compensate when necessary.



Finish as flat or stuffed ornaments.

Hearts may be done on different size canvas and in a variety of colors.

Be creative and have fun with them.

Sally's 2010 Heart Ornaments

Hearts Desire #5 in a Series of 12



Materials

7" x 7" #18 Mono Metallic Canvas—Eggshell/Gold
#22 or #24 Tapestry needles

Stretcher bars to fit

Blue invisible pen or Zig Textile Marker

1 card of the following

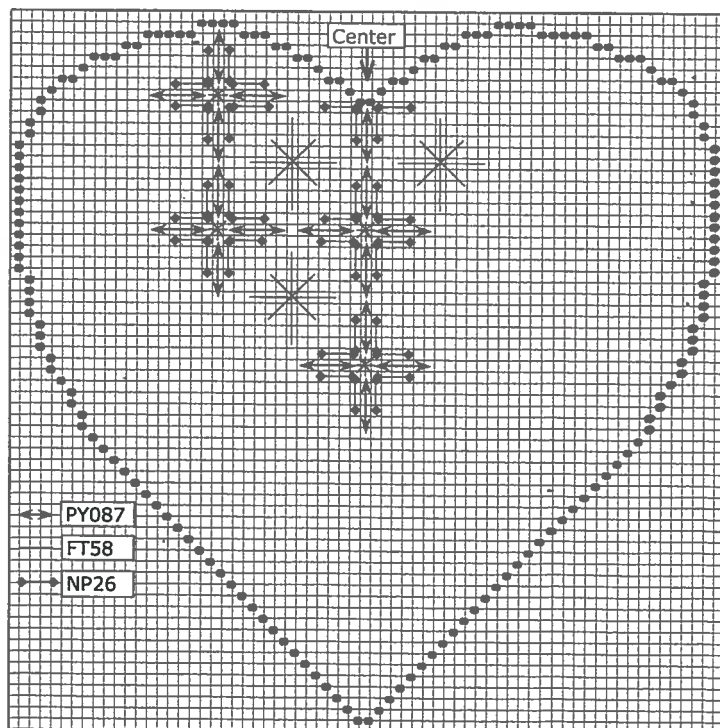
Petite Frosty Rays® PY087-Very Dark Olive Green

Fyre Werks® Soft Sheen FT58-Gold

Neon Rays Plus NP26-Burgundy

Finished Size - 3 1/2" x 3 1/2"

1. Outline - Before mounting your canvas on stretcher bars trace heart shape on canvas with marker.
2. At center point begin using PY087, working the stitch in vertical rows. Continue with NP26, finishing centers using Smyrna Crosses with FT58.
You can hide your threads behind each stitch as you work each row. Refer to chart. Continue till heart shape is filled. Compensate at edges.
3. After all rows are completed fill in with Large Double Straight Crosses using FT58. Refer to chart for count and placement. Compensate when necessary.



Finish as flat or stuffed ornaments.

Hearts may be done on different size canvas and in a variety of colors.

Be creative and have fun with them.

Sally's 2010 Heart Ornaments

Quilted Heart #6 in a Series of 12



Materials

7" x 7" #18 Mono Metallic Canvas--Eggshell/Gold
#22 or #24 Tapestry needles

Stretcher bars to fit

Blue invisible pen or Zig Textile Marker

1 card of the following

Petite Frosty Rays® PY318-Midnight Red Gloss

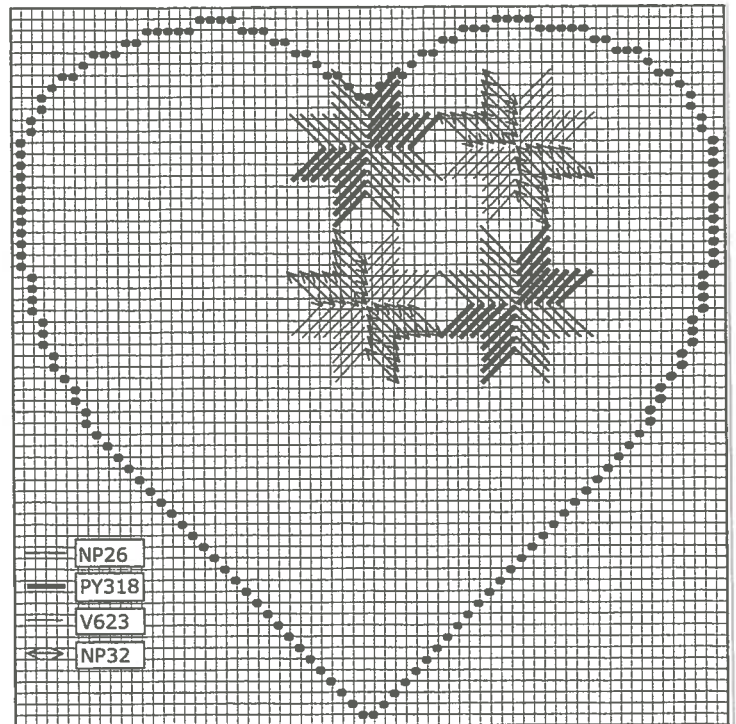
Petite Very Velvet® V623-Dark Green

Neon Rays® Plus NP26-Burgundy

Neon Rays® Plus NP32-Spruce Green

Finished Size – 3 1/2" x 3 1/2"

1. Outline - Before mounting your canvas on stretcher bars trace heart shape on canvas with marker.
2. At center point begin with PY318 and NP26 for red stitch, working each one separately. Alternate with V623 and NP32 for green stitches. Work in vertical rows. Refer to chart.
3. Continue working stitches till heart shape is filled. Compensate at edges.



Finish as flat or stuffed ornaments.

Hearts may be done on different size canvas and in a variety of colors.

Be creative and have fun with them.

Sally's 2010 Heart Ornaments

Hearts of Gold #7 in a Series of 12



Materials

7" x 7" #18 Mono Metallic Canvas—Eggshell/Gold
#22 or #24 Tapestry needles
Stretcher bars to fit
Blue invisible pen or ZigTextile Marker

1 card of the following

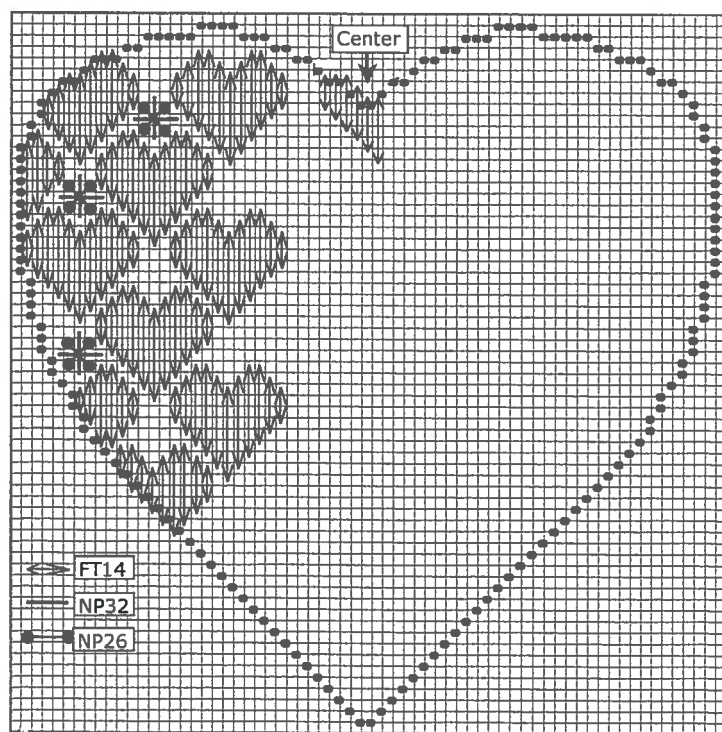
Neon Rays® Plus NP26-Burgundy
Neon Rays® Plus NP32-Spruce Green

2-Cards of

Fyre Werks® Soft Sheen FT14-Vatican Gold

Finished Size - 3 1/2" x 3 1/2"

1. Outline - Before mounting your canvas on stretcher bars trace heart shape onto canvas with marker.
2. At center point of heart use FT14 for a compensated heart stitch to fill center. Then work to the left or right to begin full heart stitches. Work in horizontal rows. See chart.
3. Continue working stitches till heart shape is filled. Compensate at edges.
4. With NP26 and NP32 fill in open areas between hearts with Double Straight Crosses. Refer to chart for stitch and placement.



Finish as flat or stuffed ornaments.

Hearts may be done on different size canvas and in a variety of colors.

Be creative and have fun with them.

Sally's 2010 Heart Ornaments

Cross My Heart #8 in a Series of 12



Materials

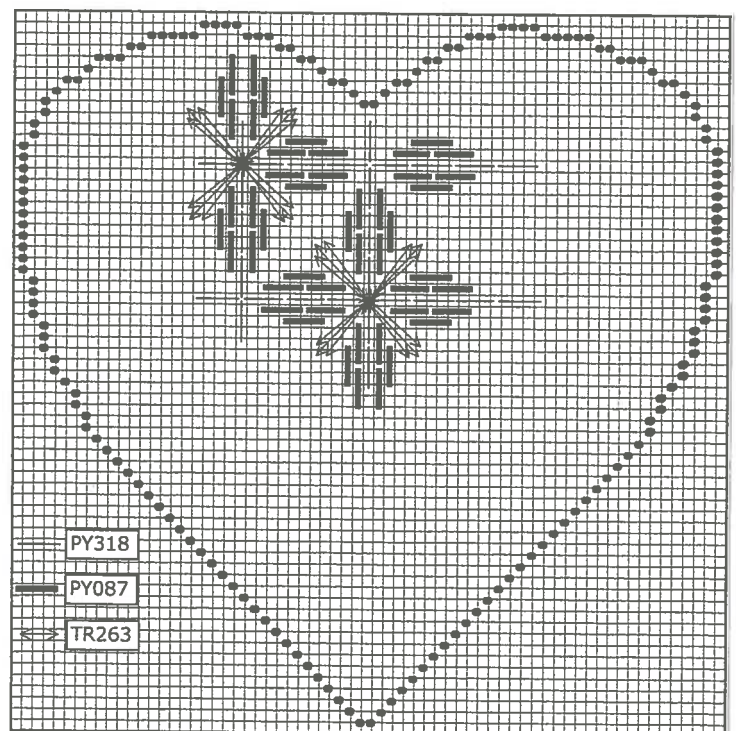
7" x 7" #18 Mono Metallic Canvas—Eggshell/Gold
#22 or #24 Tapestry needles
Stretcher bars to fit
Blue invisible pen or Zig Textile Marker

1 card of the following

Petite Frosty Rays® PY087-Very Dark Olive Green
Petite Frosty Rays® PY318-Midnight Red Gloss
Treasure Braid® #12 TR263-True Gold

Finished Size – 3 1/2" x 3 1/2"

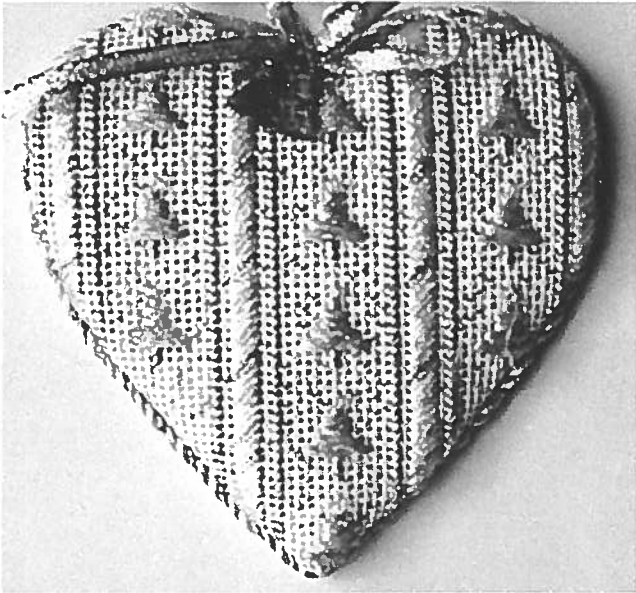
1. Outline - Before mounting your canvas on stretcher bars trace heart shape on canvas with marker.
2. At center point of your heart shape start with PY318, and PY087. Work each motif in vertical rows until heart shape is filled. See chart for stitch.
3. With TR263 put in crosses working from the center out. Refer to chart for placement.



Finish as flat or stuffed ornaments.
Hearts may be done on different size canvas and in a variety of colors.
Be creative and have fun with them.

Sally's 2010 Heart Ornaments

Christmas Heart #9 in a Series of 12



Materials

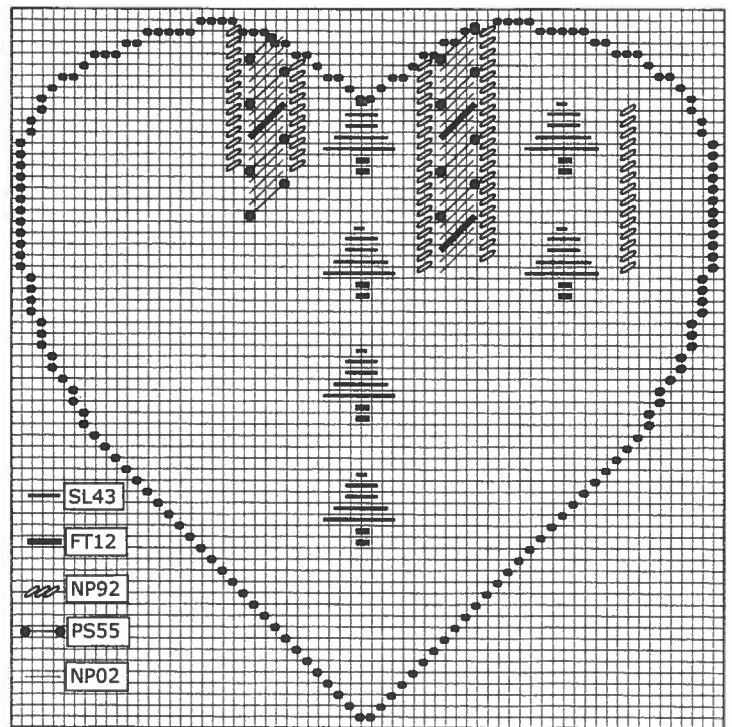
7" x 7" #18 Mono Metallic Canvas-White/Silver
#22 or #24 Tapestry needles
Stretcher bars to fit
Blue invisible pen or Zig Textile Marker

1 card of the following

Silk Lame Braid #18 SL43-Lite Mint
Fyre Werks® Soft Sheen FT12-Pewter
Petite Sparkle Rays PS55-Pale Aqua
Neon Rays® Plus NP02-White
Neon Rays® Plus NP92-Silver

Finished Size – 3 1/2" x 3 1/2"

1. Outline - Before mounting your canvas on stretcher bars trace heart shape on canvas with marker.
2. At center point of your heart shape start with SL43 for Christmas tree. Stitch twice. Use FT12 for tree trunk, stitch twice. Work in a vertical row. See chart for stitch and placement.
3. On left and right sides of Christmas trees use NP92 for a Tent Stitch border. With NP02, PS55 and FT12 stitch candy cane. End with another tent stitch border of NP92. See chart for placement.
4. Continue working each side with another row of Christmas trees ending with border and candy cane. Optional-Place a bead on top of each Christmas tree.



Finish as flat or stuffed ornaments.

Hearts may be done on different size canvas and in a variety of colors.

Be creative and have fun with them.

Sally's 2010 Heart Ornaments

Neon Heart #10 in a Series of 12



Materials

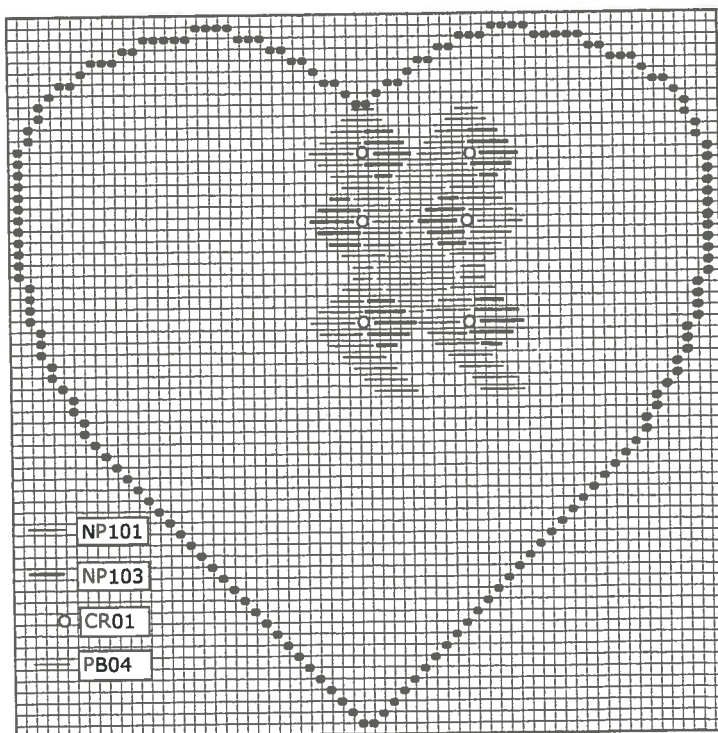
7" x 7" #18 Mono Metallic Canvas-White/Silver
#22 or #24 Tapestry needles
Stretcher bars to fit
Blue invisible pen or Zig Textile Marker

1 card of the following

Neon Rays® Plus NP101-Rose
Neon Rays® Plus NP103-Indigo Blue
Crystal Braid CR01-White Pearl
Treasure Braid® Petite PB04-Silver

Finished Size – 3 1/2" x 3 1/2"

1. Outline-Before mounting your canvas on stretcher bars trace heart shape on canvas with marker.
2. At center point of your heart shape start with NP101 stitching in vertical rows. Begin again at the top of the row finishing with NP103. See chart for stitch and placement. Fill in heart shape. Compensate when necessary.
3. In small open areas add a French Knot with CR01.
4. For remaining open areas fill in with horizontal Satin stitches using PB04. Work in vertical rows. See chart for placement.



Finish as flat or stuffed ornaments.
Hearts may be done on different size canvas and in a variety of colors.
Be creative and have fun with them.

Sally's 2010 Heart Ornaments

Heart Full of Diamonds #11 in a Series of 12



Materials

7" x 7" #18 Mono Metallic Canvas-White/Silver
#22 or #24 Tapestry needles
Stretcher bars to fit
Blue invisible pen or Zig Textile Marker

1 card of the following

Neon Rays® Plus NP56-Lite Blue
Arctic Rays AR2-White
Hi-Lights H605-Silver

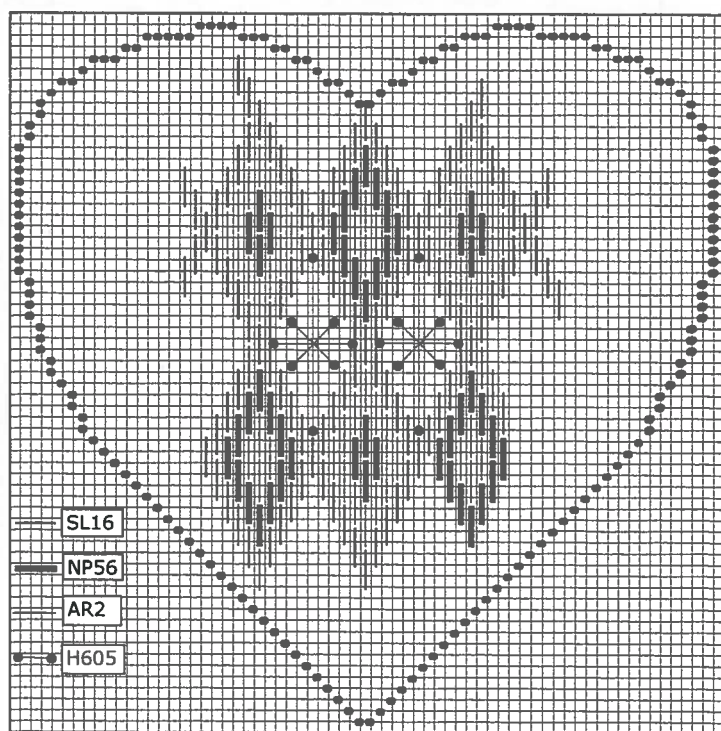
Substitution for H605
Use Silk Lame Petite SP48

2 cards

Silk Lame Braid #18 SL16-Navy

Finished Size – 3 1/2" x 3 1/2"

1. Outline - Before mounting your canvas on stretcher bars, trace heart shape on canvas with marker.
2. At center point of your heart shape start with SL16 stitching the Bargello Diamond outline. Stitch twice so that your outline is solid and none of the canvas peeks through. See chart for stitch and placement. Fill in heart shape. Compensate when necessary.
3. Fill in alternate Bargello Diamond rows with NP56 and AR2. See chart for stitch and placement of fibers. Compensate when necessary.
4. With H605, fill in open rows with extra large Diamond Straight Crosses. See chart for stitch and placement.



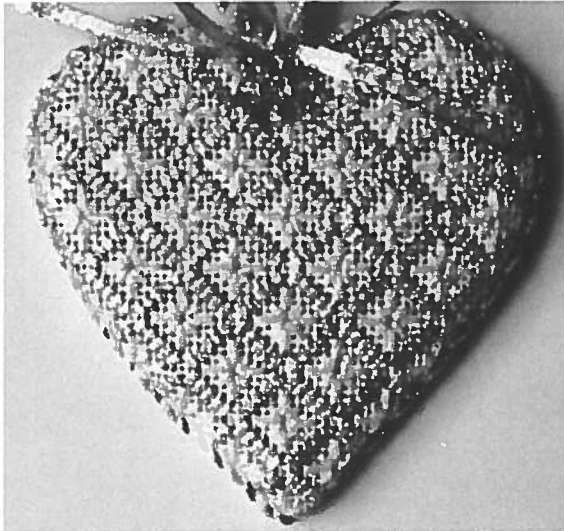
Finish as flat or stuffed ornaments.

Hearts may be done on different size canvas and in a variety of colors.

Be creative and have fun with them.

Sally's 2010 Heart Ornaments

Snowflake Heart #12 in a Series of 12



Materials

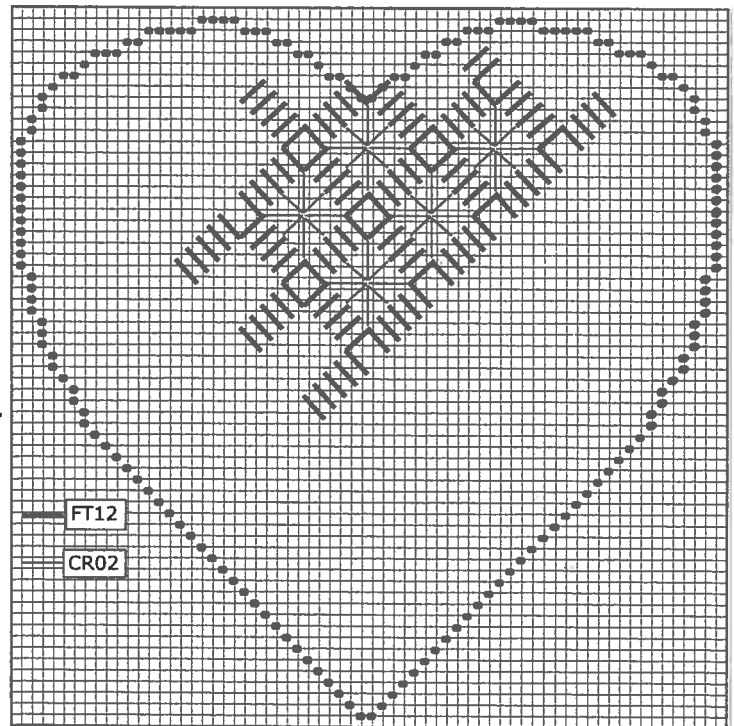
7" x 7" #18 Mono Metallic Canvas-White/Silver
#22 or #24 Tapestry needles
Stretcher bars to fit
Blue invisible pen or Zig Textile Marker

1 card of the following

Fyre Werks® Soft Sheen FT12-Pewter
Crystal Braid CR02-Baby Blue Pearl

Finished Size – 3 1/2" x 3 1/2"

1. Outline - Before mounting your canvas on stretcher bars trace heart shape on canvas with marker.
2. At center point of your heart shape start with FT12 stitching in diagonal rows. See chart for stitch and placement. Fill in heart shape with rows in both directions. Compensate when necessary.
3. In open areas fill in with Eyelet stitches using CR02. Each Eyelet is worked from the center out. Compensate when necessary.



Finish as flat or stuffed ornaments.
Hearts may be done on different size canvas and in a variety of colors.
Be creative and have fun with them.