

Crazy Quilt Egg

A Design by Barbara Baker
especially for *Rainbow Gallery*

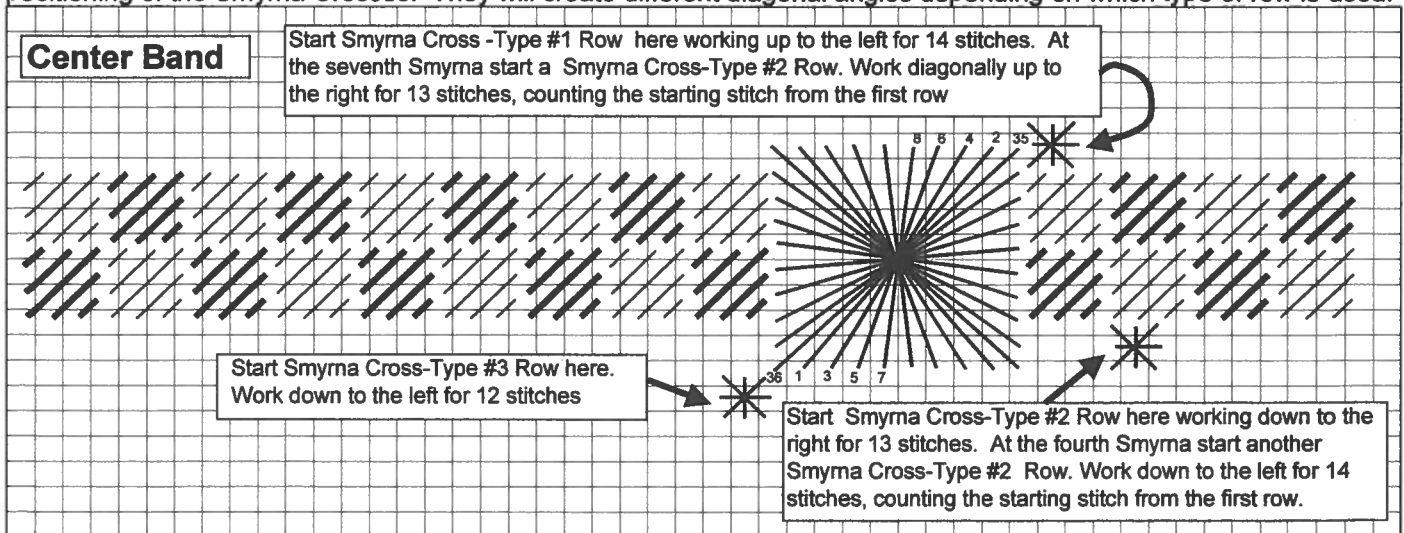
Materials:

- #18 Mono Canvas 8" X 7"
- Stretcher Bars to Fit
- #22 tapestry needle
- 1 card each thread in chosen color pallet.
- Finished Size 3 1/2" X 4 1/2"

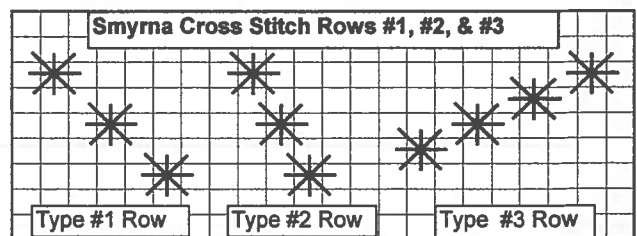
THREAD	#	PURPLES	WHITES	BLUES
Neon Rays® †	1	NP79-Brite Gold	NP100-Brassy Gold	NP02-White
Neon Rays® †	2	NP10-Creme	NP10-Crème	NP92-Clay
Treasure Ribbon Petite	3	PR90-Spanish Gold	PR03-Gold	PR04-Silver
Panache	4	PN11-Lt. Lavender	PN39-Ecru	PN19-Wedgwood
Panache	5	PN12-Purple	PN40-Champagne	PN33-Royal Blue
Fyre Werks® Soft Sheen	6	FT24-Purple	FT10-White Pearl	FT28-Royal Blue
Splendor® - 4 Strands	7	S1117-Iris	S899-Dark Ecru	S1001-Dark Delft Blue
Petite Very Velvet	8	V626-Purple	V602-White	V664-Indigo Blue
Neon Rays®	9	N127-Violet	N90-Platinum	N124-Delft Blue
Crystal Braid	10	CR03-Lavender Pearl	CR01-White Pearl	CR02-Baby Blue Pearl
Neon Rays® † or Petite Sparkle Rays	11	NP07-Lavender	PS70-Ecru	PS54-Pale Cornflower

Start by tracing egg shape from back page on your canvas before mounting on stretcher bars. Mark center. This shape is a guideline. Your stitched piece can overlap the edges. It will be evened out when finished into an egg.

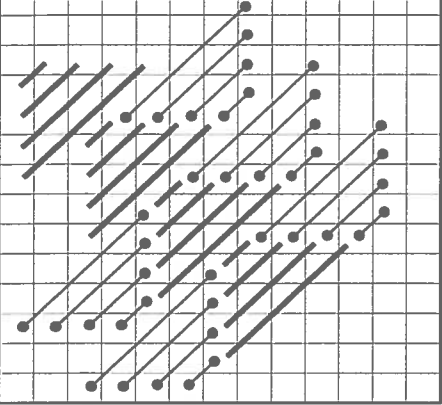
Center Band From the center count down 5 threads and left 3 threads. Begin the 9 X 9 Rhodes Stitch here using Thread #3. Stitch the Scotch Stitch band alternating Threads #1 and #2. (Right side is same as left side.) Start diagonal dividing rows of Smyrna Cross Stitches as indicated on the chart using Thread #4. Please note the positioning of the Smyrna Crosses. They will create different diagonal angles depending on which type of row is used.



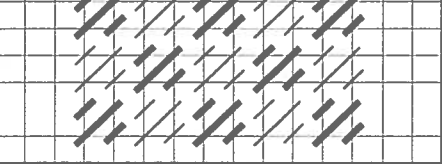
You now have seven different areas in your egg. Area 1 is in the top part of the egg and is the farthest left. Continue clockwise to Area 2 and then 3. Area 4 is in the bottom half of the egg and the farthest to the right. Area 5 is below that and Area 6 is the Bargello area to the left of that. Area 7 is above and to the left of Area 6. Compensating stitches will be necessary at the edges of each area.



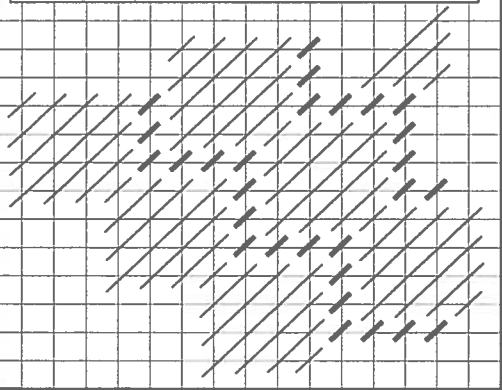
Area 1 - Milanese Stitch
 Stitch in Threads #6 and 4 Ply Thread #7



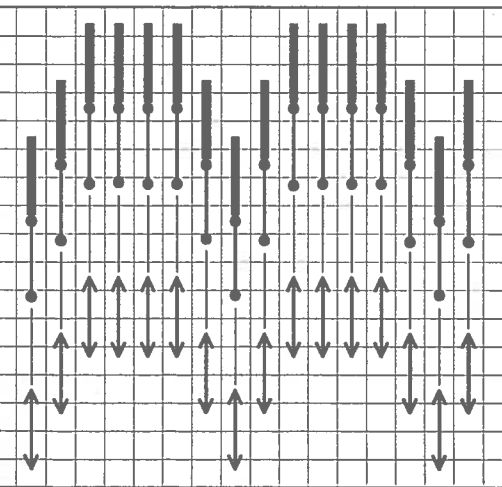
Area 2 - Mosaic Stitch
 Stitch in Threads #8 and #9



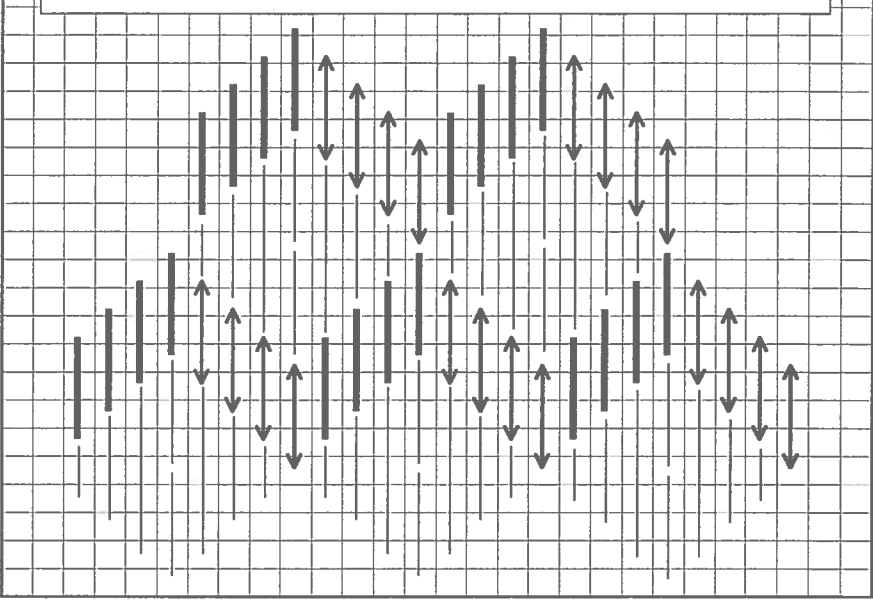
Area 4 - Giant Moorish
 Stitch Scotch Stitches in Thread #11 and Tent Stitches in Thread #10



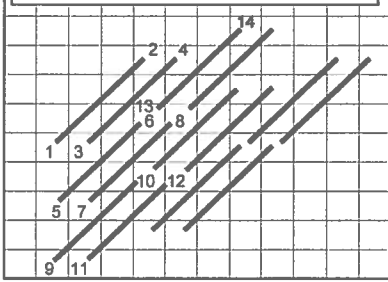
Area 6 - Bargello Pattern
 First row - Thread #8 Second row - Thread #9
 Third row Thread #11 Fourth row - Thread #10



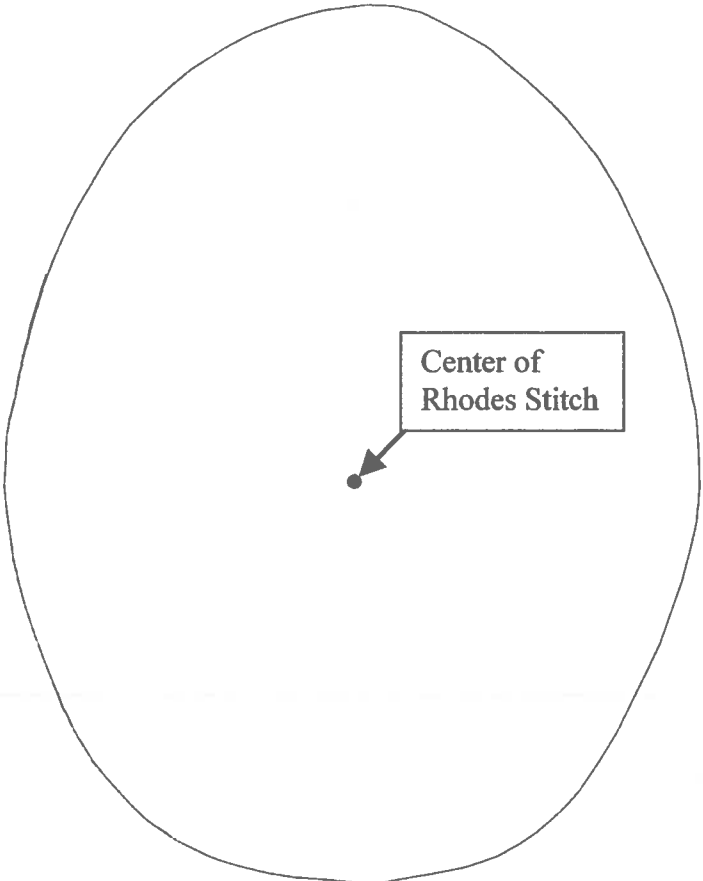
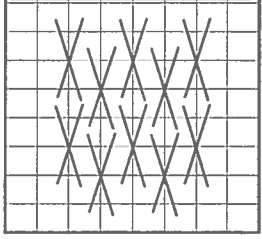
Area 3 - Diamond Pattern
 Stitch the Diamonds first with Thread #6, then stitch the dark straight stitches with Thread #5 and the Arrow ended stitches in Thread #4



Area 5 - Brick Stitch Variation
 Stitch in 4 Ply Thread #7



Area 7 - Alternating Oblong Cross
 Stitch in Thread #5



Crazy Quilt Egg - color possibilities

<u>THREAD</u>	<u>#</u>	<u>PURPLES</u>	<u>WHITES</u>	<u>BLUES</u>
Neon Rays® †	1	NP79-Brite Gold	NP100-Brassy Gold	NP02-White
Neon Rays® †	2	NP10-Creme	NP10-Crème	NP92-Clay
Treasure Ribbon Petite	3	PR90-Spanish Gold	PR03-Gold	PR04-Silver
Panache	4	PN11-Lt. Lavender	PN39-Ecru	PN19-Wedgwood
Panache	5	PN12-Purple	PN40-Champagne	PN33-Royal Blue
Fyre Werks® Soft Sheen	6	FT24-Purple	FT10-White Pearl	FT28-Royal Blue
Splendor® - 4 Strands	7	S1117-Iris	S899-Dark Ecru	S1001-Dark Delft Blue
Petite Very Velvet	8	V626-Purple	V602-White	V664-Indigo Blue
Neon Rays®	9	N127-Violet	N90-Platinum	N124-Delft Blue
Crystal Braid	10	CR03-Lavender Pearl	CR01-White Pearl	CR02-Baby Blue Pearl
Neon Rays® † or Petite Sparkle Rays	11	NP07-Lavender	PS70-Ecru	PS54-Pale Cornflower
<u>THREAD</u>	<u>#</u>	<u>CREAMS</u>	<u>PINKS</u>	<u>AQUAS</u>
Neon Rays® †	1	NP79-Brite Gold	NP02-White	NP02-White
Neon Rays® †	2	NP10-Creme	NP92-Clay	NP92-Clay
Treasure Ribbon Petite	3	PR90-Spanish Gold	PR04-Silver	PR04-Silver
Panache	4	PN40-Champagne	PN04-Carnation	PN36-Blue Aqua
Panache	5	PN41-Mocha	PN06-Fuschia	PN37-Teal
Fyre Werks® Soft Sheen	6	FT33-Moonglow	FT9-Rose	FT19-Aqua
Splendor®	7	S1135-Lite Mocha	S1134-Dark Orchid	S866-Aqua
Petite Very Velvet	8	V603-Ecru	V665-Dark Raspberry	V617-Peacock
Neon Rays®	9	N03-Pale Beige	N15-Rose Pink	N63-Aqua
Crystal Braid	10	CR01-White Pearl	TR290-Baby Pink	CR02-Baby Blue Pearl
Neon Rays® † or Petite Sparkle Rays	11	PS70-Ecru	NP14-Hot Pink	NP63-Lite Aqua
<u>THREAD</u>	<u>#</u>	<u>GREENS</u>	<u>REDS</u>	<u>YOUR OWN COLORS</u>
Neon Rays® †	1	NP79-Brite Gold	NP02-White	
Neon Rays® †	2	NP10-Creme	NP92-Clay	
Treasure Ribbon Petite	3	PR90-Spanish Gold	PR04-Silver	
Panache	4	PN44-Old Gold	PN14-Christmas Red	
Panache	5	PN13-Christmas Green	PN15-Ruby Red	
Fyre Werks® Soft Sheen	6	FT22-Emerald Green	FT6-Brite Christmas Red	
Splendor®	7	S828-Lt. Christmas Green	S911-Christmas Red	
Petite Very Velvet	8	V623-Dark Green	V612-Cherry Red	
Neon Rays®	9	N129-Lite Christmas Green	N118 Christmas Red	
Crystal Braid	10	CR05-Pale Mint Green	CR01-White Pearl	
Neon Rays® † or Petite Sparkle Rays	11	NP105-Christmas Green	NP22-Crimson	

NOTE: Threads #1, 2, and 3 are for the center band and clasp. Thread #4 is for the dividing Smyrna's and should be a lighter value but in the same family as thread #5.