

Cross Stitcher's Surprise Series from *Rainbow Gallery*

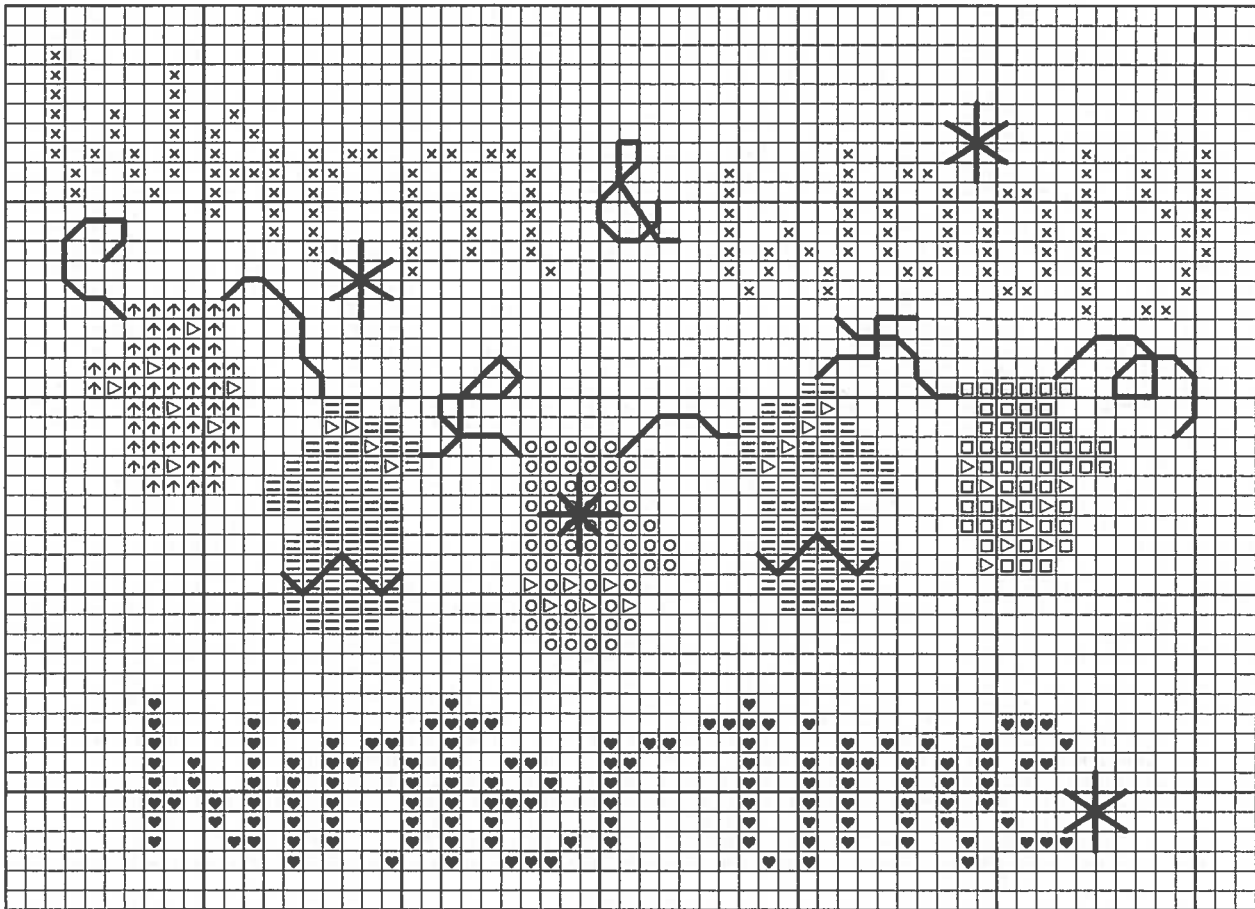
*January's "Wooly Winter Mittens"*

Stitch count: 42h x 59w - 4¼" h x 6" w ♡ 10ct natural brown Betsy Ross linen from Wichelt (#56-B)

**Rainbow Gallery Fibers - 1 card each**

- |   |                                     |
|---|-------------------------------------|
| ▷ Rainbow Angora RA2-Off White - 1 strand     | × Grandeur® G826-Burgundy- 1 strand |
| ○ Rainbow Cashmere H11-Burgundy - 1 strand    | = Rainbow Tweed RT15-Denim- 2 ply   |
| ♥ Rainbow Cashmere H16-Dk Blue- 1 strand      | ↑ Rainbow Tweed RT21-Violet- 2 ply  |
| □ Rainbow Cashmere H20-Dk Sea Green- 1 strand | Arctic Rays AR10-Brown- 1 strand    |

**Mill Hill Treasure** (1pkg) #15001 metal snowflakes



After completing cross stitches, use 1 strand dark blue Cashmere to backstitch the "&" and for the star stitch on the center burgundy mitten. Use 1 strand off white Angora for the straight stitches on the denim blue mittens. Use 1 strand brown Arctic Rays to backstitch the string linking the mittens together. Use white floss or thread and attach 3 metal snowflakes as noted on the chart by the large bold star lines.

Designed by

**ERICA MICHAELS**  
DESIGNS FOR COUNTED CROSS STITCH

Go to [www.ericamichaels.com](http://www.ericamichaels.com) for more designs by Linda Stolz

**Come back for each new monthly design!**

Cross Stitcher's Surprise Series from **Rainbow Gallery**



February's "Pastel Hearts"

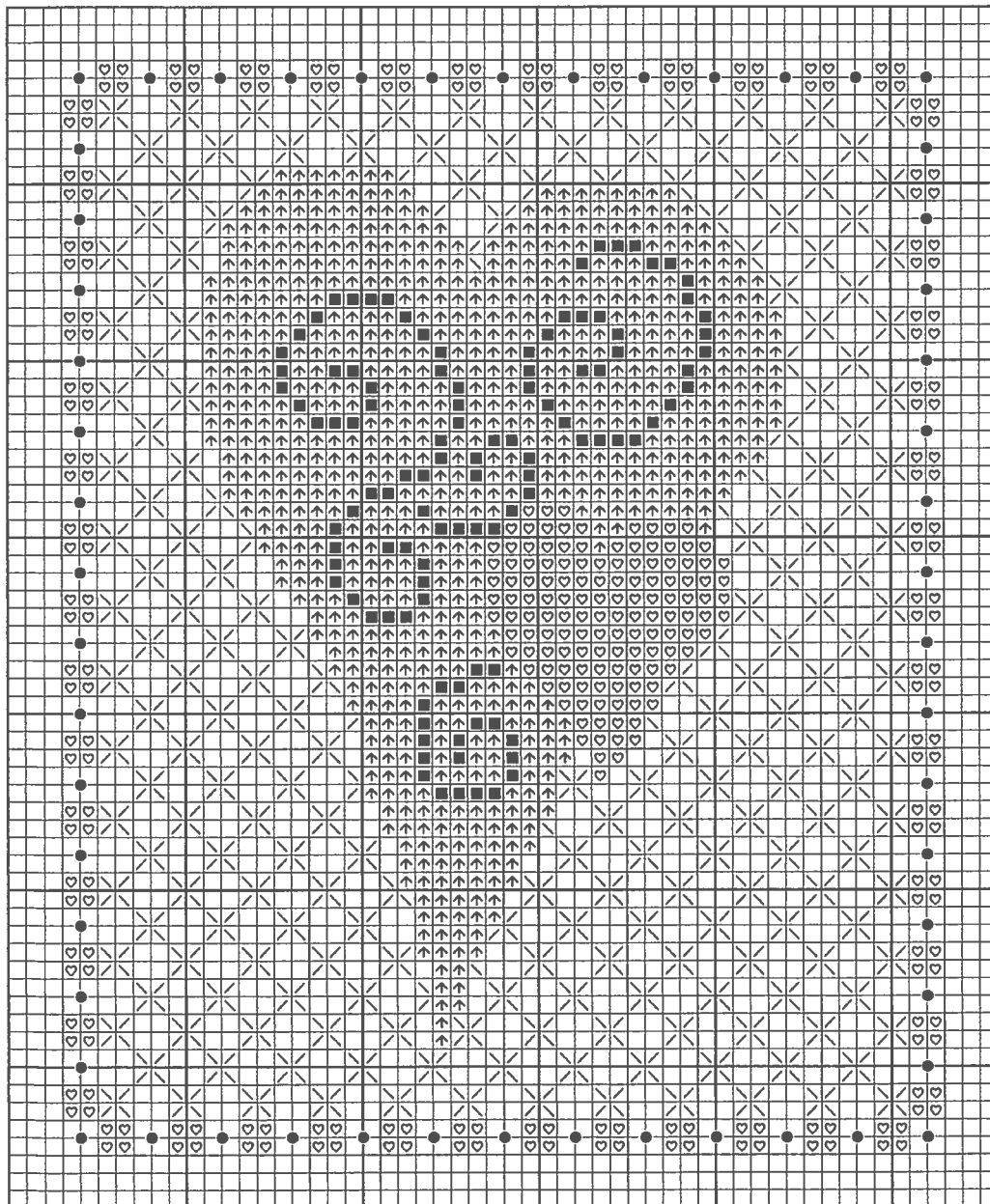
Stitch count: 62h x 50w – 4½”h x 3½”w ♡ Wichelt 28ct Star Sapphire linen (#76-113)

Rainbow Gallery Fibers – 1 card each

- Hi-Lights H605-Silver – 1 strand
- ♡ Splendor® S812-Dark Lavender – 2 ply
- ↑ Splendor® S824-Antique Mauve – 2 ply

Mill Hill

- #10093 Magnifica beads
- Just Another Button Co.
- Med. lavender heart #3344.M



X symbols are smyma stitches over 4 threads using silver Hi-Lights; these form the background checkerboard pattern. Where these stitches meet the large central hearts, just stitch the parts of the smymas needed to compensate. Another option is to stitch groups of four individual cross stitches. Use matching thread or floss to stitch the beads at the ● symbols The clay heart is placed inside the smaller heart stitched in lavender Splendor.

See many more of our designs and learn about our products at [www.rainbowgallery.com](http://www.rainbowgallery.com)

Designed by

**ERICA MICHAELS**  
DESIGNS FOR COUNTED CROSS STITCH

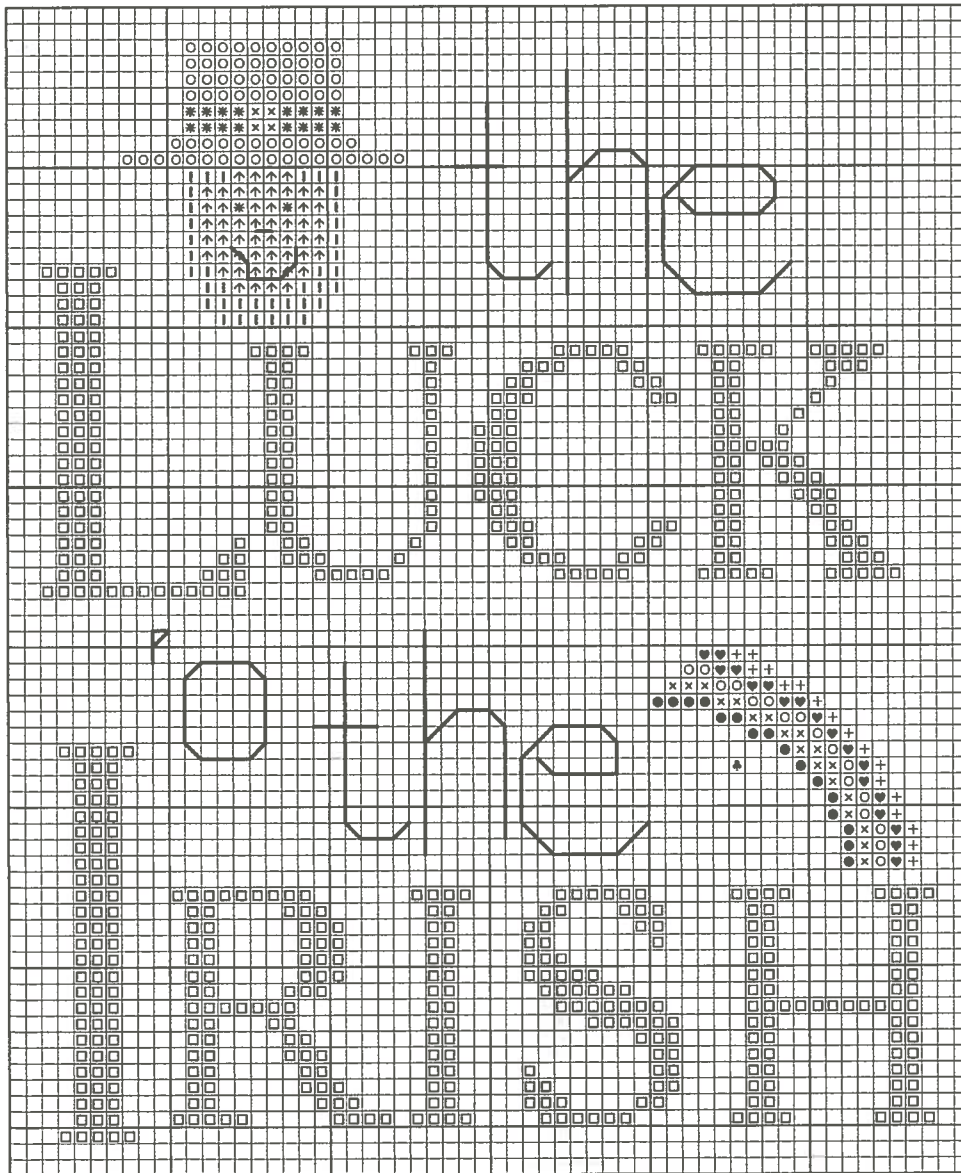
Go to [www.ericamichaels.com](http://www.ericamichaels.com) for more designs by Linda Stolz.

## March's "Luck o' the Irish"

Stitch count: 69h x 56w - 7 1/2"h x 6 1/4"w ♡ 18ct Rosemary linen from Wichelt (#59-148)

### Rainbow Gallery Fibers - 1 card each\*

- |  |   |   |
|--|---|---|
| ▣ Grandeur® G836-Dk Forest Green – 1 strand (2 cards)* | × | Fyre Werks® F9B-Bronze – 1 strand       |
| * Grandeur® G801-Black – 1 strand                      | ○ | Fyre Werks® F34-Green – 1 strand        |
| ↑ Splendor® S923-Med Dk Flesh – 4 ply                  | ♥ | Fyre Werks® F36-Royal Blue – 1 strand   |
| ! Wisper W77-Russet – 2 ply                            | + | Fyre Werks® F43-Purple – 1 strand       |
| ● Fyre Werks® F38-Red – 1 strand                       |   | Pebby Perle® P62-Dk Amethyst – 1 strand |
- Honey Bee Creations ♣- shamrock button w/glitter



\*Grandeur #G836 is the only fiber for which you will need a second card.

Use 1 strand Pebby Perle to backstitch lettering and 1 strand black Grandeur for mouth and nose detail on face.

Use matching thread or floss to attach the shamrock button at the rainbow. Fluff the Wisper beard with a nap brush if you like that effect.

See many more of our designs and learn about our products at [www.rainbowgallery.com](http://www.rainbowgallery.com)

Designed by

**ERICA MICHAELS**  
DESIGNS FOR COUNTED CROSS STITCH

Go to [www.ericamichaels.com](http://www.ericamichaels.com) for more designs by Linda Stolz

XX

Cross Stitcher's Surprise Series from *Rainbow Gallery*

XX

April's "Easter Duckling"

Stitch count: 47w x 36h - 6¾" w x 5" h ♥ 7ct white Klostern from Zweigart

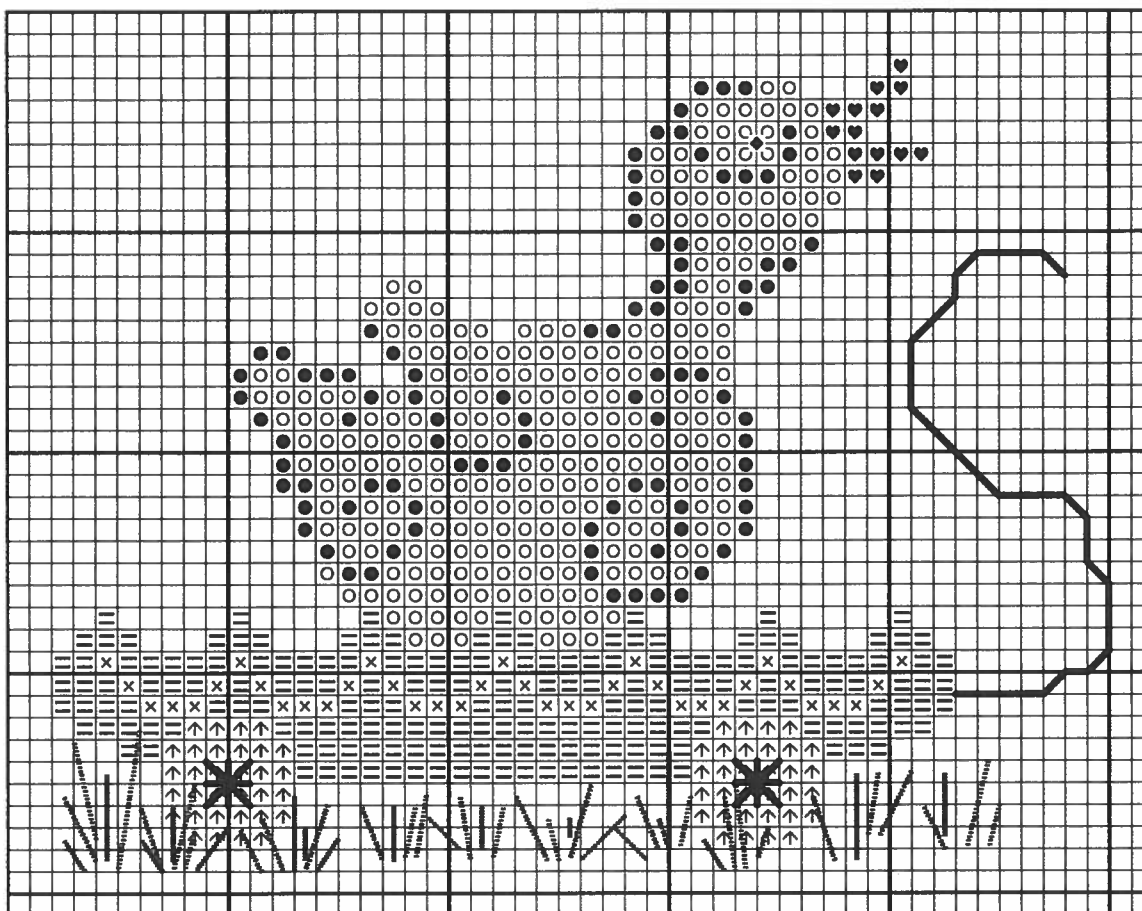
**Rainbow Gallery Fibers - 1 card each**

- Rainbow Tweed RT20-Yellow – 1 strand
- Arctic Rays AR15-Yellow– 2 strands
- = Fuzzy Stuff FZ04-Brite Blue – 2 strands
- ♥ Splendor® S944-Orange Sherbet – 8 ply
- × Fyre Werks® F41-Pink – 1 strand
- ↑ Splendor® S808-Med. Purple– 1 strand (all 12 ply)
- Arctic Rays AR11-Grass Green – 1 strand

**JHB International**

- (1) ¼" tan 'barbie button' from JHB
- Just Another Button Co.**
- (1 each) #4493,4494,4495 Easter egg buttons

TIP: Stitch with the Arctic Rays and Fuzzy Stuff last so the "fuzzy" fibers don't get in the way of your other stitches.



Use 1 full strand of purple Splendor to backstitch the pull string; pink Fyre Werks for large smyrna stitches over the center 4 stitches of the "wheels"; and green Arctic Rays for straight stitching the grass – use the lines on the chart as a guideline and fill in as much as you like. Attach the tan button for the eye at the ♦ symbol; attach the pink egg button at the end of the string, and place the other 2 egg buttons so they are "nestled" in under the duckling.

Designed by

**ERICA MICHAELS**  
DESIGNS FOR COUNTED CROSS STITCH

Go to [www.ericamichaels.com](http://www.ericamichaels.com) for more designs by Linda Stolz

XX

**Come back for each new monthly design!**

XX

XX

# Cross Stitcher's Surprise Series from *Rainbow Gallery*

XX

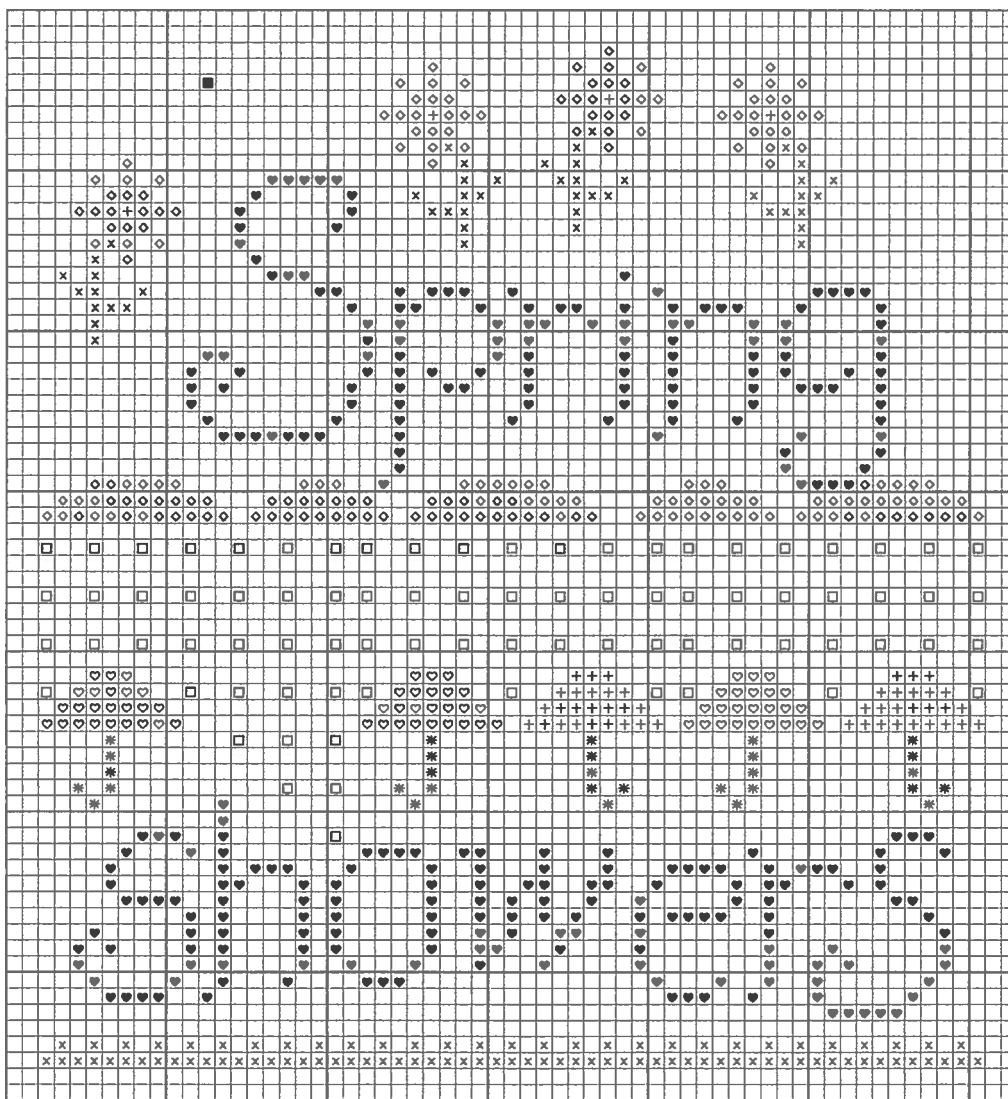
## May's "Spring Showers"

Stitch count: 64h x 59w - 6½"h x 6"w ♥ 10ct Winter White Betsy Ross linen from Wichelt (#56-150)

### Rainbow Gallery Fibers - 1 card each

- Fyre Werks® F42 Pale Blue – 1 strand
- \* Grandeur® G891 Smoke Gray – 1 strand
- + Grandeur® G878 Maize – 1 strand
- x Rainbow Tweed RT10 Leaf Green – 2 ply
- ♥ Splendor® S864 Dk Periwinkle – 4 ply
- ◇ Splendor® S800 Cool White – 4 ply
- ♡ Splendor® S996 Lite Orchid – 4 ply

**Just Another Button Co.** (1) yellow butterfly #1142



After completing all cross stitches, attach the butterfly button at the ■ symbol.

Designed by

**ERICA MICHAELS**  
DESIGNS FOR COUNTED CROSS STITCH

Go to [www.ericamichaels.com](http://www.ericamichaels.com) for more designs by Linda Stolz

XX

**Come back for each new monthly design!**

XX



## July's "Liberty Star"

Stitch count: 71w x 66h – 5"w x 4 3/4"h ♥ 28ct Morning Glory linen from Wichelt (#76-147)

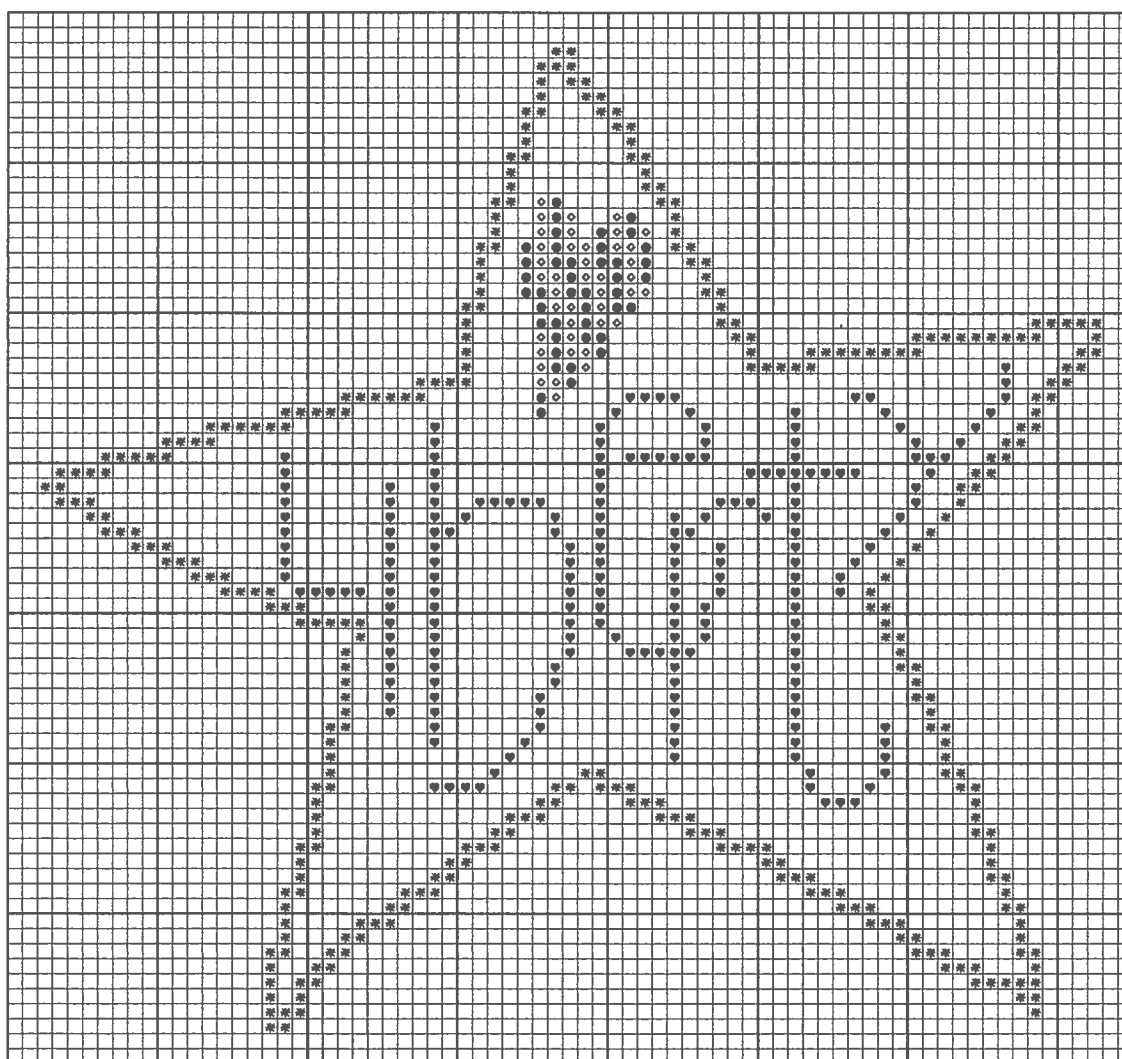
**Rainbow Gallery Fibers - 1 card each**

- Nordic Gold® ND6-Red– 1 strand
- ♥ Nordic Gold® ND9-Royal Blue– 1 strand
- ◇ Splendor® S800-Cool White– 2 ply
- × Splendor® S933-Golden Yellow– 2 ply

**Just Another Button Co.**

(1) medium white star #3313.m

After all cross stitching, attach the star button to dot the letter "i" – using white silk. If you prefer larger count fabrics, stitch this design on Wichelt's 18ct Morning glory linen using red and blue Fyre Werks® and yellow and white Grandeur®.



Designed by

**ERICA MICHAELS**  
 DESIGNS FOR COUNTED CROSS STITCH

Go to [www.ericamichaels.com](http://www.ericamichaels.com) for more designs by Linda Stolz





XX

# Cross Stitcher's Surprise Series from *Rainbow Gallery*

XX

## September's "Summer's Done!"

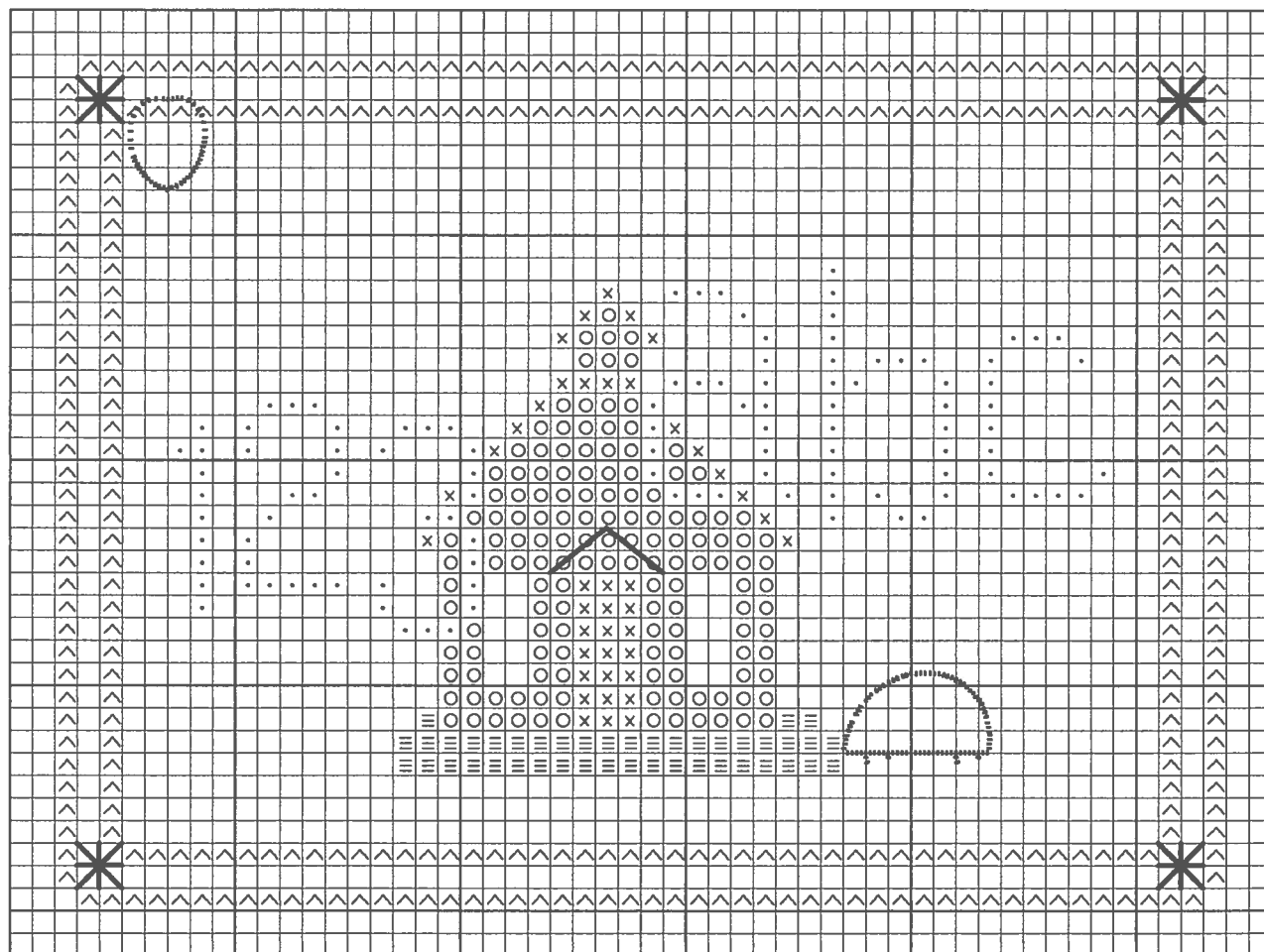
Stitch count: 51w x 38h – 5"w x 3½"h ♥ 10ct black Heatherfield from Wichelt (#9424-95)

**Rainbow Gallery Fibers - 1 card each**

- ^ Pebbly Perle® P40-Copper – all 4 ply
- x Pebbly Perle® P57-Marine Blue– all 4 ply
- Rainbow Tweed RT01-Ecru– 2 ply
- o Rainbow Tweed RT33-Dk Christmas Red – 2 ply
- ≡ Splendor® S829-Christmas Green– 4 ply

**Mill Hill Buttons**

- (1) #86103 apple
- (1) #86117 school bus



Straight stitch the "roof" over the door with 4-ply blue Pebbly Perle. Use 2 ply copper Pebbly Perle for the smyrna stitches in the corners. You can use the red Rainbow Tweed to attach the apple button in the upper left corner – at a bit of an angle. The school bus is "parked" to the right of the schoolhouse and attached with a yellow thread or floss.

Designed by

**ERICA MICHAELS**  
DESIGNS FOR COUNTED CROSS STITCH

Go to [www.ericamichaels.com](http://www.ericamichaels.com) for more designs by Linda Stolz

XX

**Come back for each new monthly design!**

XX



# Cross Stitcher's Surprise Series from *Rainbow Gallery*



## October's "Corn Treats"

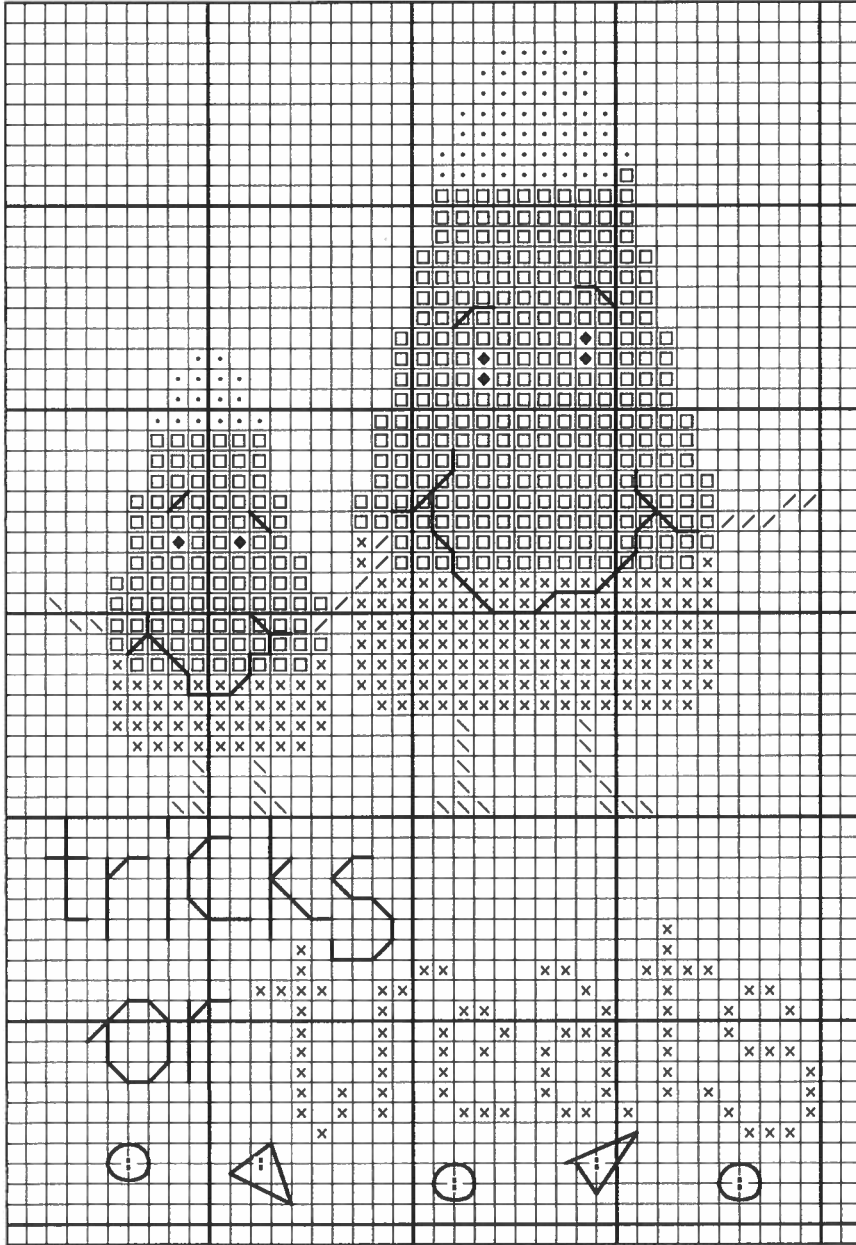
Stitch count: 38w x 57h - 3 3/4" w x 5 3/4" h ♡ 10ct Navy Tula from Zweigart

### Rainbow Gallery Fibers - 1 card each

- \ / Frosty Rays Y081-Grass Green Gloss - (1/2 crosses)\*\*
- Fuzzy Stuff FZ08-Brite Orange - 1 strand
- ◆ Fyre Werks® F43-Purple - 1 strand
- x Rainbow Tweed RT20-Yellow - 3 ply
- Silk & Cream BG34-White - 1 strand

### Just Another Button Co.

- (2) tiny candy corn buttons #4414.T
- (3) lime konfetti buttons #kp-1004.L



**\*\*NOTE:** A few of the 1/2 crosses of Frosty Rays are stitched in the opposite direction to give the lines a better visual direction. Use 1 strand and follow the direction of the slash symbols.

Backstitch eyebrows and smiles with 1 strand purple Fyre Werks; backstitch "tricks or" with 1 strand white Silk & Cream.

Attach buttons at the bottom using the chart for guidance.

See many more of our designs and learn about our products at [www.rainbowgallery.com](http://www.rainbowgallery.com)

Designed by

**ERICA MICHAELS**  
DESIGNS FOR COUNTED CROSS STITCH

Go to [www.ericamichaels.com](http://www.ericamichaels.com) for more designs by Linda Stolz



Come back for each new monthly design!



XX

# Cross Stitcher's Surprise Series from *Rainbow Gallery*

XX

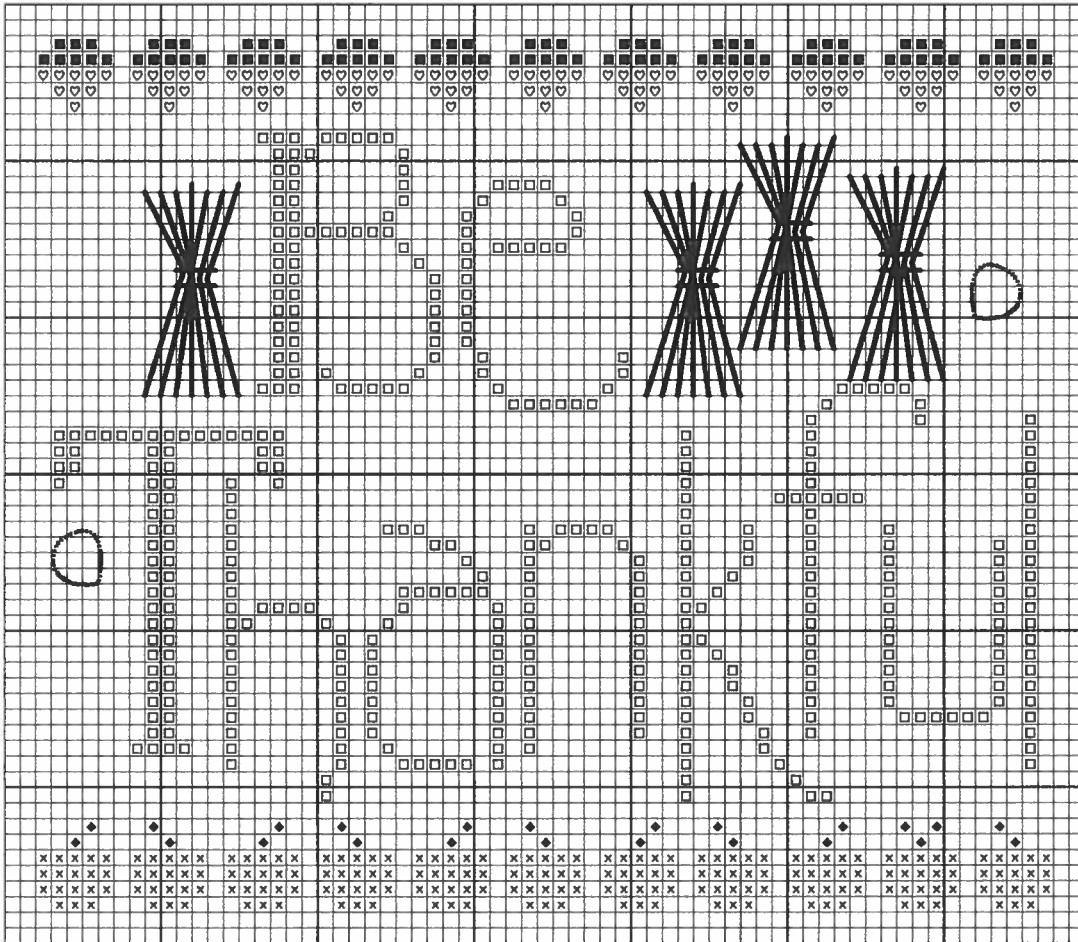
## November's "Be Thankful"

Stitch count: 65w x 56h – 6½"w x 5½"h ♡ 10ct Chili Pepper Heatherfield from Wichelt (#9424-34)

### Rainbow Gallery Fibers - 1 card each

- |                                     |  |
|-------------------------------------|--|
| □ Grandeur® G817-Pumpkin – 1 strand | ■ Alpaca AL82-Light Brown – 1 strand     |
| ◆ Grandeur® G848-Olive – 1 strand   | ♡ Splendor® S904-Dk Golden Brown – 4 ply |
| × Grandeur® G887-Rust – 1 strand    | Arctic Rays AR9-Golden Straw – 1 strand  |

### Mill Hill Buttons (2) #86166 acorn buttons



Stitch all cross stitches per chart. Shocks of wheat are made with long straight stitches (12-13 squares high – vary the height a bit to shape the top) of golden Arctic Rays. Don't make these too tight because you are going to "pull" them in with short horizontal straight stitches to create the sheaf or shock shape. Use some G817 to attach the acorn buttons – one to the left of the capital "T" and the other next to the shock of wheat at the far right.

Designed by

**ERICA MICHAELS**  
DESIGNS FOR COUNTED CROSS STITCH

Go to [www.ericamichaels.com](http://www.ericamichaels.com) for more designs by Linda Stolz

XX

**Come back for each new monthly design!**

XX

XX

*Cross Stitcher's Surprise Series* from *Rainbow Gallery*

XX

*December's "O Christmas Tree"*

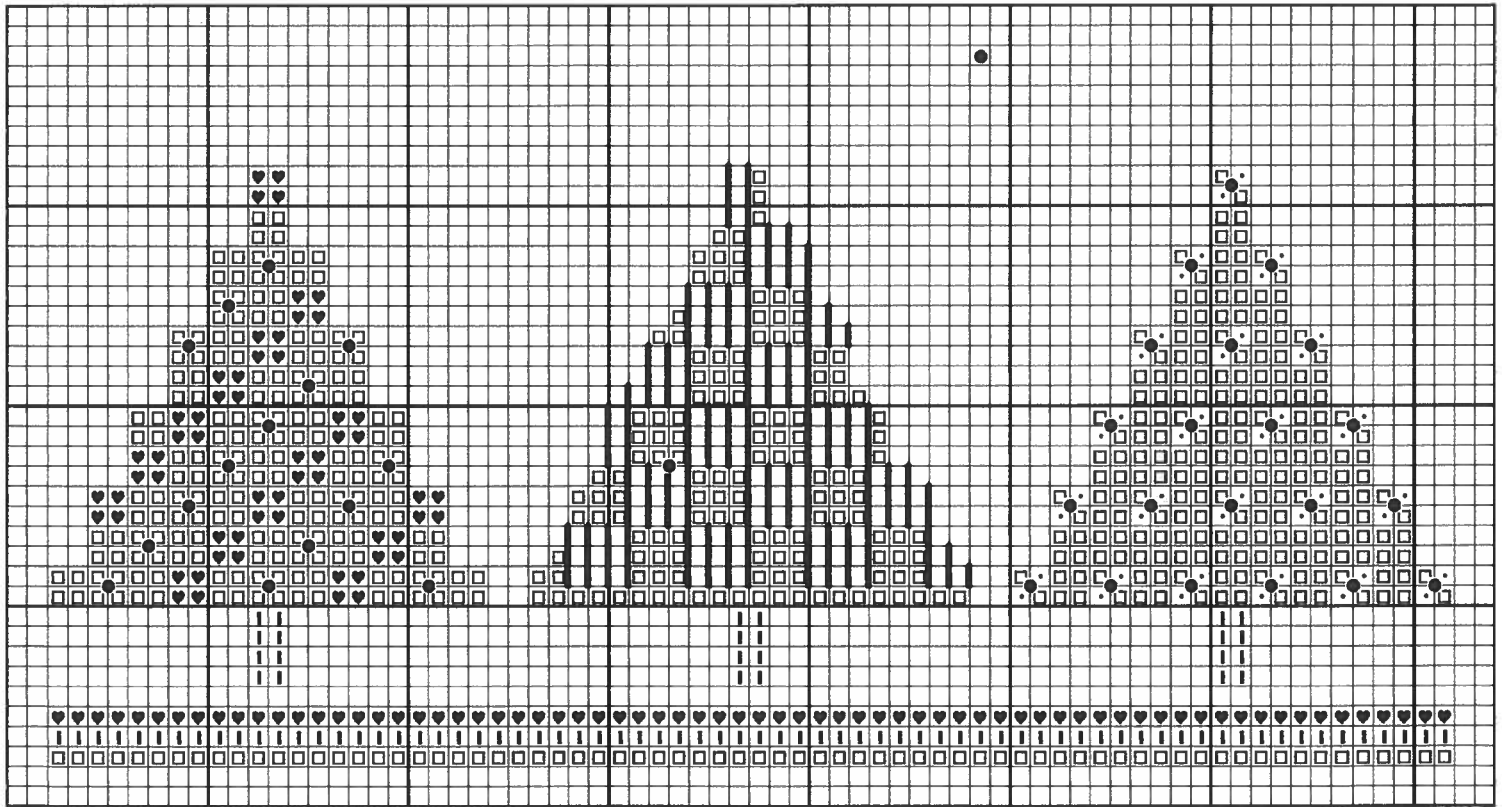
Stitch count: 70w x 36h – 4½”w x 2¼”h ♡ Wichelt 16ct Antique White Betsy Ross linen (# 55-101)

**Rainbow Gallery Fibers - 1 card each**

- Elegance® E907-Dk Pistachio Green – 1 strand
- Nordic Gold® ND2-Gold – 1 strand
- ♥ Nordic Gold® ND6-Red – 1 strand
- ! Splendor® S904-Dk Golden Brown – 2 ply
- Fuzzy Stuff FZ10-Tree Green – 1 strand

**Embellishments from Mill Hill**

- #00557 gold seed beads
- #41023 cream petite beads
- #12167 lt topaz star
- #12235 matte ruby petite flat heart



TIP: Stitching the cross stitches in a "continental" type style on the first pass or half of the cross stitch will help keep the fibers from slipping under the fabric threads on this 16ct linen. Complete your cross stitches as with usual cross stitching. After completing all cross stitches, make straight stitches with Fuzzy Stuff in the center tree where noted by the solid lines.

All embellishments are noted with a ● symbol on the chart. Attach gold beads in the left tree; attach the red heart treasure with a gold bead in the center tree; attach cream petite beads in the tree on the right. Finally, use a cream bead to attach the topaz star at the ● above and between the center and right trees.

Designed by

**ERICA MICHAELS**  
DESIGNS FOR COUNTED CROSS STITCH

Go to [www.ericamichaels.com](http://www.ericamichaels.com) for more designs by Linda Stolz.

XX

**Come back for each new monthly design!**

XX