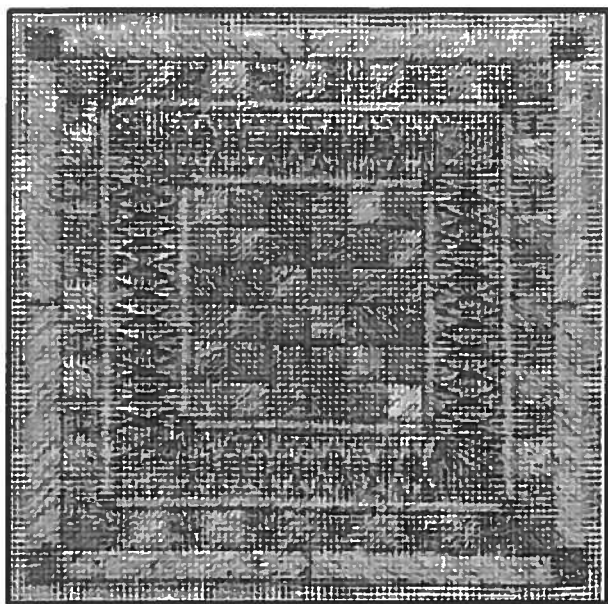


# Spring Fling

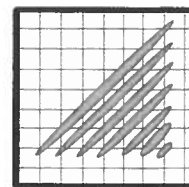
Designed for Rainbow Gallery by:

**LAURA J. PERIN DESIGNS**

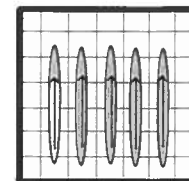
26040 ELENA RD. LOS ALTOS HILLS, CA 94022 650-948-6768  
For more designs, visit: [www.laurajperindesigns.com](http://www.laurajperindesigns.com)



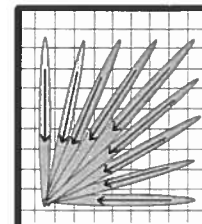
Symbol	Materials
	Overture, V78 - 'Waterfall'
	Pebbly Perle, P61 - Orchid
	Rainbow Tweed, RT09 - Baby Green
	Nordic Gold, ND13 - Ice Blue
	Hi-lights, H639 - Pale Violet
	#22 tapestry needle
	8' x 8' 18 ct. mono canvas, light blue, or complementary color
Design size on 18 ct. mono canvas: 5" x 5"	



**Diagonal Satin Stitch**



**Straight Stitch**



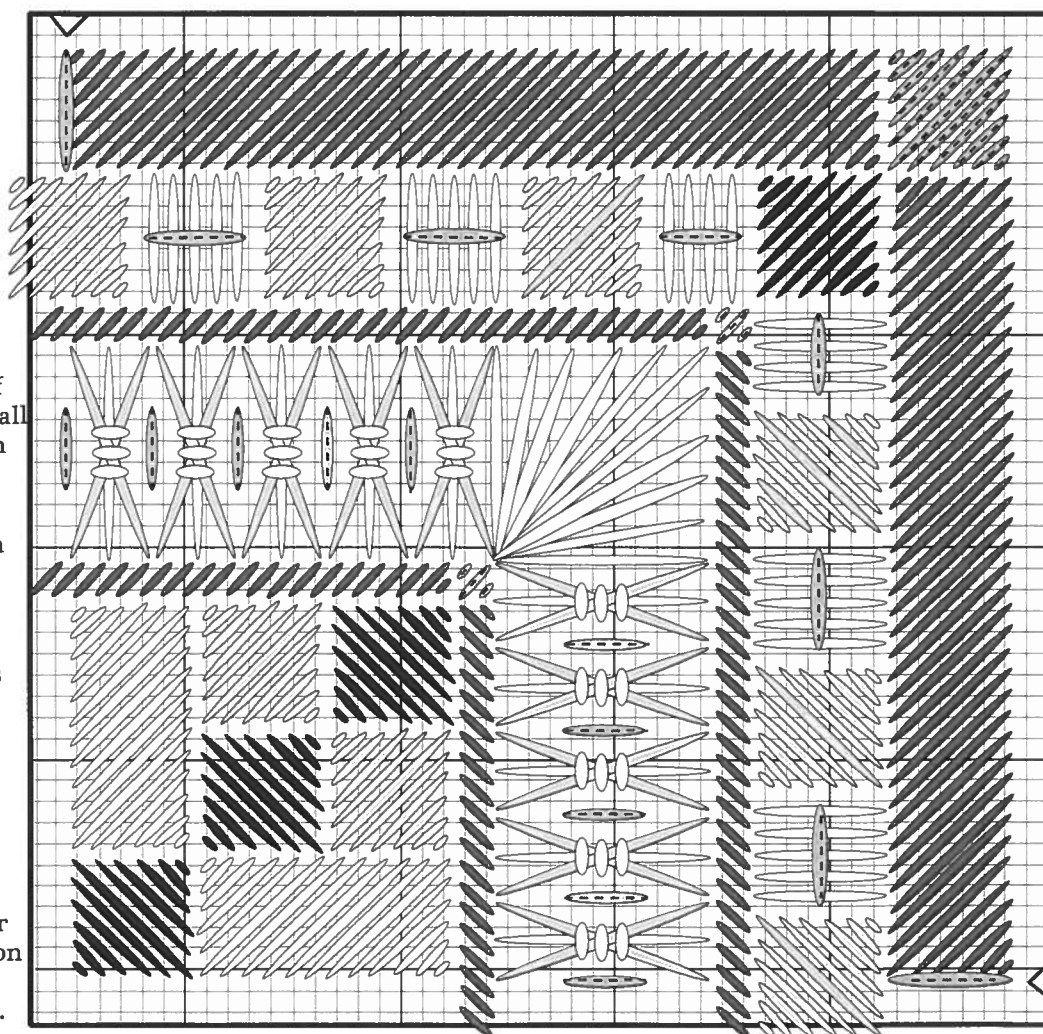
**Fan Stitch**

*DESIGN IDEAS: This design can be worked up as an ornament, or as a small pillow or box insert. It can also be turned 'on point' and a tassel added, for a fancy ornament.*



## INSTRUCTIONS:

- 1. Central Motif:** Beginning at the center of your canvas, work the four-patch blocks, with one strand P61, then one ply of Overture. Work the remaining rectangles with one strand of Hi-lights. Work narrow border with two ply of RT09; in each corner add a tiny mosaic square of one strand of metallic ND13.
- 2. Long Cross Border:** Lay one strand of Hi-lights first, then put long crosses on top with one ply Overture. On top of each long cross, tie down with three small stitches of *two* ply Hi-lights. In between each cross, add a straight stitch of one strand of metallic ND13.
- 3. Fan Corners:** Create fan corners with one strand of Hi-lights H639, placing stitches in every other hole, and going *down* into the same center hole.
- 4. Checker Border:** First, make squares with one ply of variegated Overture, going over six canvas threads. Between each square, put straight stitches of one strand of Hi-lights. Add straight stitch on top with ND13. In corners, make a square with one strand Pebbly Perle.
- 5. Outer Border:** Stitch wide outer border with *two* ply of RT09, going over six canvas threads; change stitch direction at border centers. At corners make a square with one strand of metallic ND13.



**NOTE: THIS GRAPH SHOWS ONLY A QUARTER OF THE WHOLE PATTERN.**  
Stitch this section first, then rotate the pattern to stitch the other sections.

