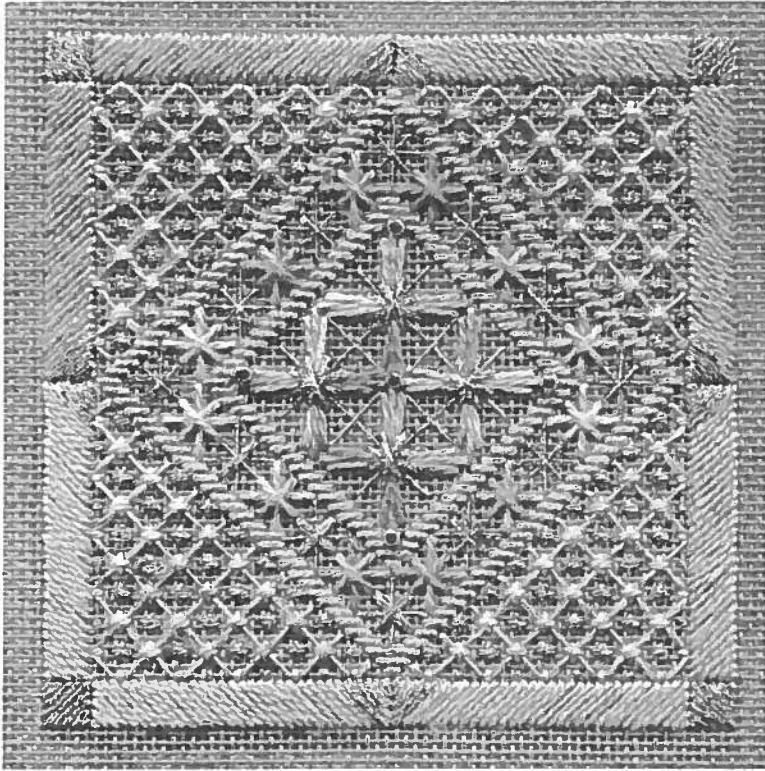


Winter Stars



General Instructions:

- To keep work taut, stretcher bars or scroll bars are highly recommended.
- Start all threads with a waste knot on top of canvas; end all threads by weaving them into the back of existing work. Avoid carrying threads across the back of unstitched canvas.
- When using the variegated thread, stitch with 1 ply of the 4-ply cotton. Cut a length of thread, then separate it into 4 plies - but stitch with only 1 ply.
- When using the solid color Grandeur, stitch with the whole strand.
- Before attaching canvas to stretcher bars or scroll bars, mark your starting point in the center of canvas.
- When using metallic threads or braids, cut and stitch with shorter pieces to avoid fraying.
- NOTE: Each LINE on the graphs represent one THREAD of the canvas.

Stitching Instructions:

Center Stars: Find and mark the center of your canvas. From the center of your canvas, Fan Stitch the arms of each star shape using 1 ply of the variegated 4-ply Overture. Put a Triple Cross on top of each large star: first, make a large cross stitch on top with 1 strand of Sparkle! Braid SK18; next, add two elongated crosses on top of that, with 1 strand of Tiara T132.

Narrow Diamond Borders: Straight Stitch both narrow borders that frame the central star box using 1 strand of Grandeur S932.

Winter Star Border: Fill the border with winter stars. First work the finer Smyrna Stars with 1 strand of Sparkle! Braid SK18, topping them with a cross stitch of 1 strand of Tiara T132. Next, create the remaining Smyrna Stars with 1 ply of the variegated 4-ply Overture.

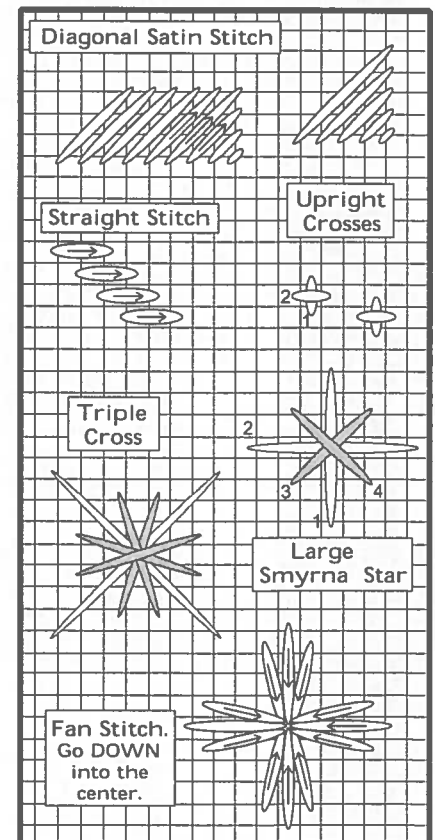
Starry Fields: Fill in each quadrant with a field of small stars. First, work the four-way background lattice with 1 strand Sparkle! Braid SK18. Second, add a small Upright Cross at each lattice intersection, using 1 ply of the variegated Overture. Third, place a small Upright Cross inside each lattice opening, using 1 strand of Tiara T132. [Note: for a different look, you can also switch the variegated crosses with the metallic crosses.]

Wide Outer Border: Diagonal Satin Stitch the wide outer border, going over 5 threads of canvas, with 1 strand of Grandeur. NOTE: The border stitch direction changes in each quadrant of the design. At the centers, add diagonal stitches of Tiara T132. In the corners, make diagonal satin stitch squares with 1 strand of Tiara T132.

[OPTIONAL: Add some beads - of your own color choice - wherever you want. I've shown a few places to put beads on the main graph.]

Finishing Ideas: This small square design can be inset in a pillow; put on a wooden box top; set on point and made into an ornament; or framed. Enjoy these winter stars!

These are the different stitches used in this design:




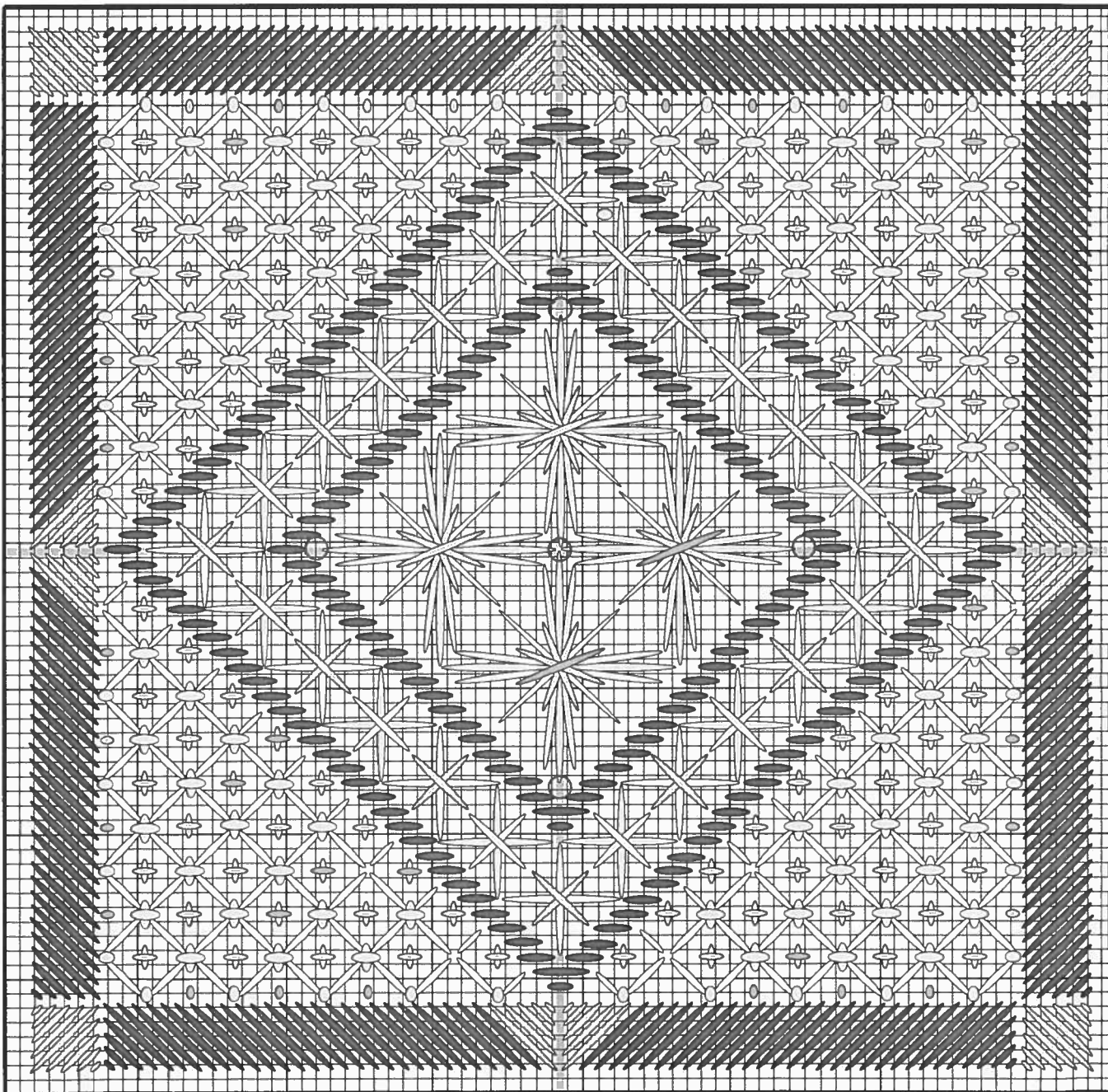
Designed for Rainbow Gallery
by

LAURA J. PERIN DESIGNS

712 COLLEGE ST. HEALDSBURG, CA 95448 650-823-5373
website: www.ljperindesigns.com

Winter Stars

Symbol	Materials	Design
	<p>Overture (a 4-ply cotton), V90 - "Anemone"</p> <p>Grandeur, S932 - lite blue violet</p> <p>Tiara, T132 - sky blue</p> <p>Sparkle! Braid, SK18 - silver blue</p> <p><i>OPTIONAL: beads of your choice</i></p> <p>#22 tapestry needle</p> <p>8" x 8" 18 ct. mono canvas, in leventeen blue</p>	<p>Count: 72h x 72w threads</p> <p>Size: 18 ct: apprx. 4.5"h x 4.5"w (Cut canvas at least 8" x 8")</p> <p><i>This design can be done in lots of different thread colors, on lots of different canvas colors. Use pale, bright or dark thread colors on light, medium or dark canvas. Pick your variegated thread first, then match one solid color and two sparkly metallics to it. Have fun playing with this design!</i></p>



NOTE: Each LINE on this graph represent ONE thread of the canvas.

Copyright © 2009 Rainbow Gallery. Permission granted to make duplicate copies.