

Thumbelina's Present

#18 Mesh Hand Painted Canvas from **JP Needlepoint**
Stitch Guide by Sally London



Materials List

Stretcher Bars to Fit

One card of the following **Rainbow Gallery** threads:

Glisten G01-Jet Black

Glisten G02-Snow White

Glisten G04-Silvery Moon

Glisten G15-High Risk Red

Glisten G24-Chocolate Pudding

Flair F505-Pale Pink

Neon Rays N02-White

Neon Rays Plus NP22-Crimson

Splendor S1000-Very Dark Taupe

Entice E217-Emerald

Entice E258-Jasmine Green

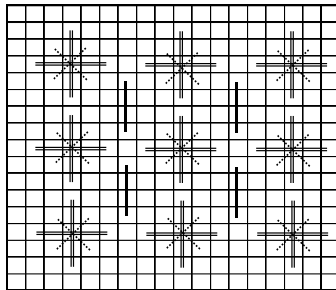
Sparkle Rays SR02-Lime

Crystal Braid CR01-White Pearl

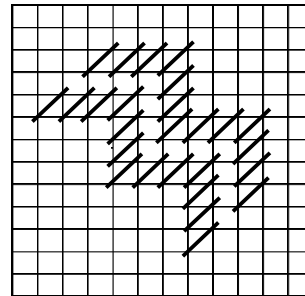
Silk Lane Braid Petite SP11-Yellow

Silk Lane Braid Petite SP02-White

Double Cross
Gobelin



Byzantine
Stitch



1. **HAT AND POM-POM**-First thing that needs to be stitched is the fur on the hat and the pom-pom. With 1 very long length of G02, folded in the eye of the needle to make 2 strands begin Turkey Work Stitch. You can stitch Turkey Work the traditional way or you can stitch this Basketweave style pushing your loops off to the side. Once you have filled in the area cut down and sculpt to desired height. With 1 strand of G15 fill in hat with Byzantine Stitch. See chart and picture.
2. **KITTY'S FACE AND PAWS**-Basketweave fur with G01, G04 and N02. Outline paws with G04, fill in with N02. Nose use F505, mouth NP22. Ears F505. Eyes are E258, S1000-Splendor use 4 strands, G04, G01 and CR01 for center.
3. **PRESENT**-Background of present is Basketweave with SP11. Christmas trees are French Knots done only on the vertical threads, tent stitch on the horizontal threads with E217. For tree trunks use G24. Cross Stitch tree topper with NP22. Bow on present leave to the very end after background is completed. For bow work in sections Ruching SR02. Anchor a length of SR02 in back and bring your needle to the front, take one filament from the middle of SR02 and pull it. Your Sparkle Rays will gather up. Put your needle to the back and tack down with a filament from SR02 threaded in a smaller needle. You can tie this off or you can move over to the next section of your bow. This takes time to do but the effect is great once you have it all done. A practice stitch is helpful off to the side of your canvas if necessary.
4. **BACKGROUND**-Starting at the middle of your canvas work to the left filling in area with 1 strand of SP02 for Double Straight Crosses. For the Gobelin running stitch use CR01. Continue working from the middle filling in the right side of background. See chart & picture.