

Susan Portra's "SALLY'S CHRISTMAS LIGHTS" for Rainbow Gallery



Instructions for 7 new designs as well as the 6 original lights.

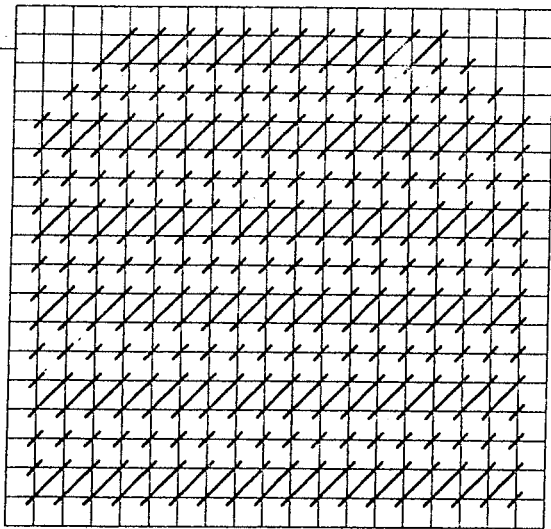
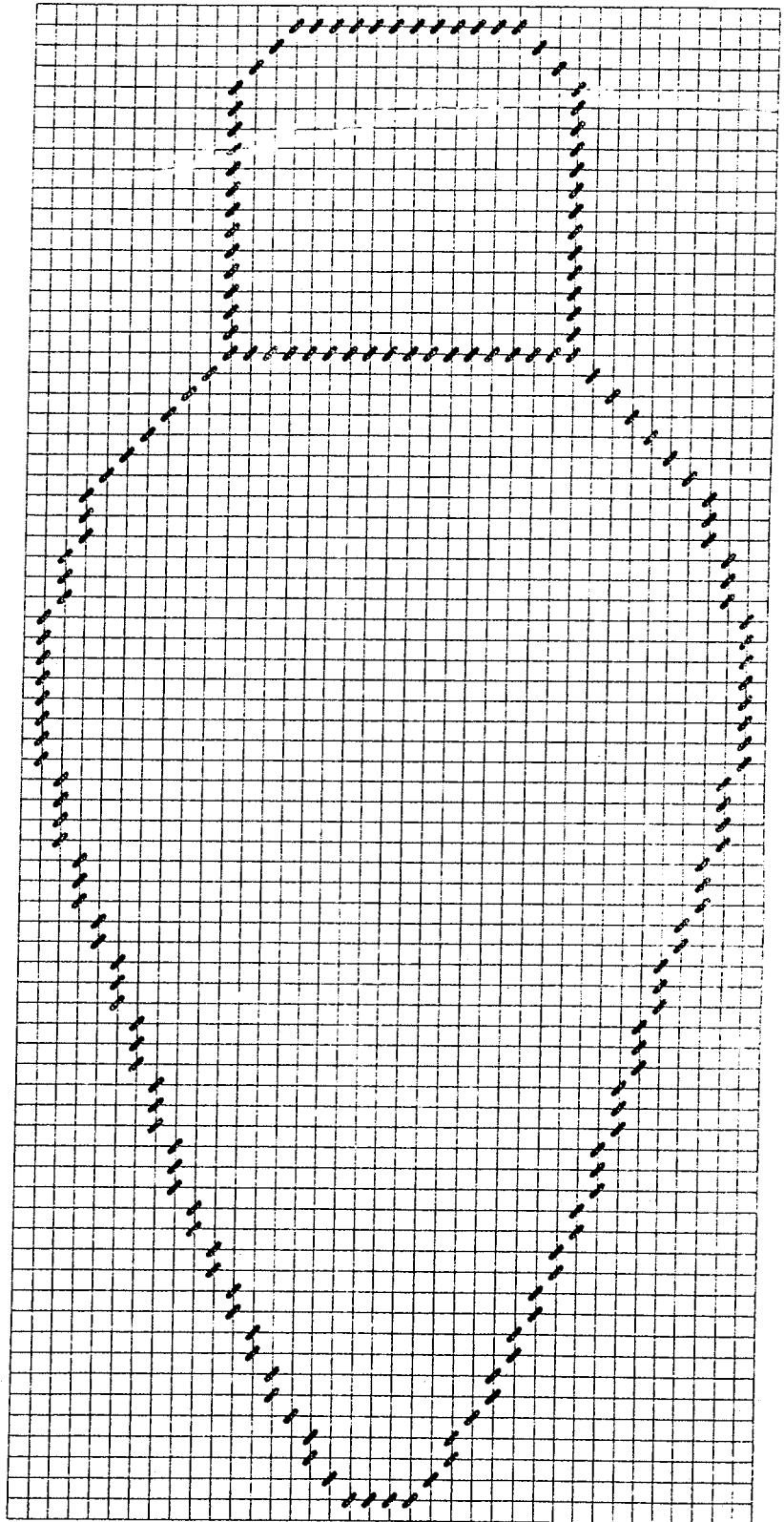
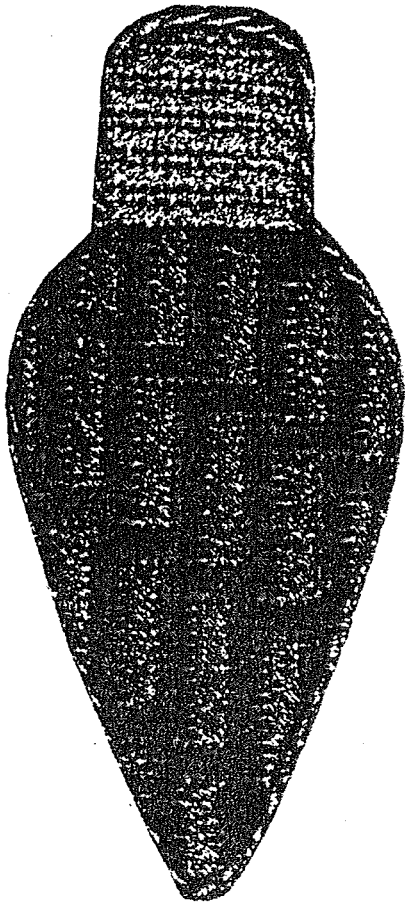


Diagram for top of all lights

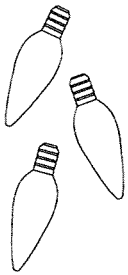
Stitch outline for all lights.

Photocopying of this design is invited.

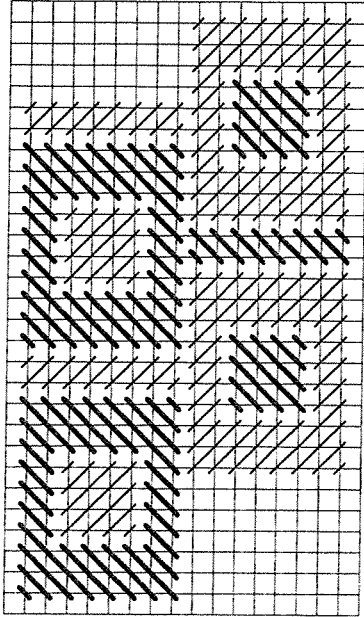
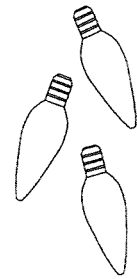
Rainbow Gallery

7412 Fulton Ave., #5, North Hollywood, CA 91605

Production by Lightworks

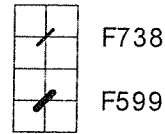


Susan Portra's "SALLY'S CHRISTMAS LIGHTS" for Rainbow Gallery



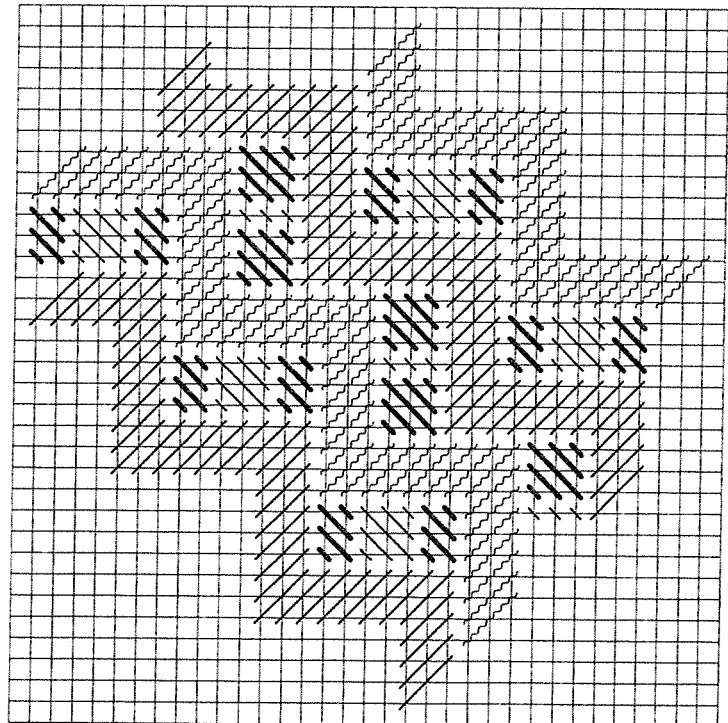
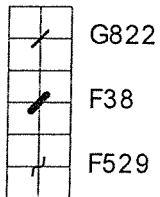
YELLOW LIGHT (#1)

Fiesta! F738-Yellow
Flair F599-Brite Yellow



RED LIGHT (#1)

Flair F529-Dark Red
Fyre Werks F38-Red
Grandeur G822-Dark Red



Photocopying of this design is invited.

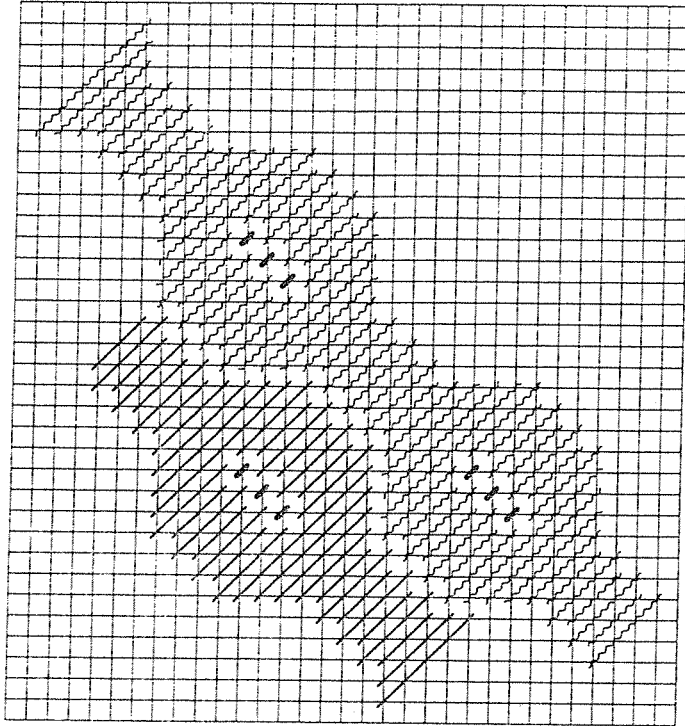
Rainbow Gallery

7412 Fulton Ave., #5, North Hollywood, CA 91605

Production by Lightworks



Susan Portra's "SALLY'S CHRISTMAS LIGHTS" for Rainbow Gallery

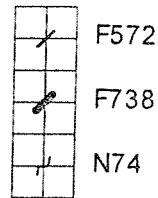


YELLOW LIGHT (#2)

Neon Rays N74-Golden Yellow

Flair F572- Yellow

Fiesta! F578-Yellow

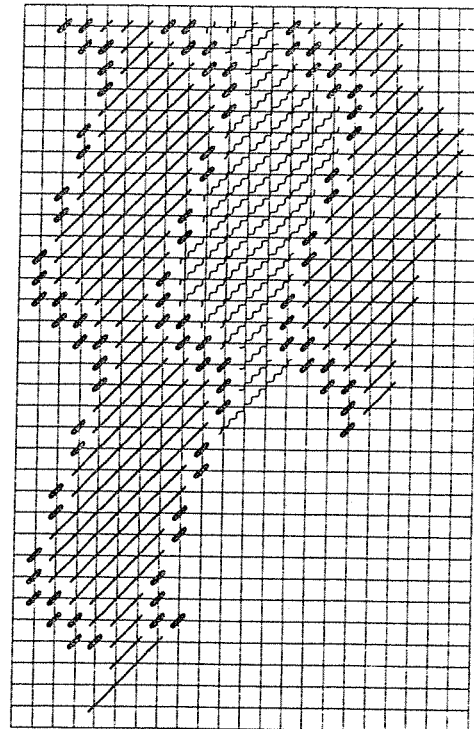
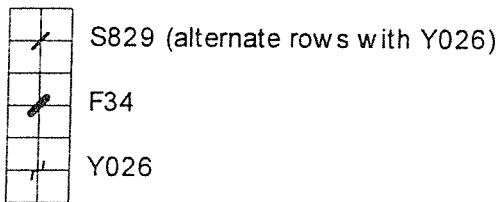


GREEN LIGHT (#2)

Frosty Rays Y026-Christmas Green

Fyre Werks F34- Green

Splendor S829-Christmas Green

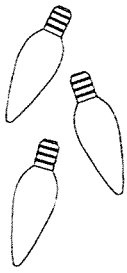


Photocopying of this design is invited.

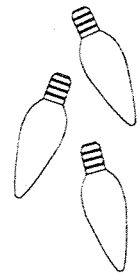
Rainbow Gallery

7412 Fulton Ave., #5, North Hollywood, CA 91605

Production by Lightworks

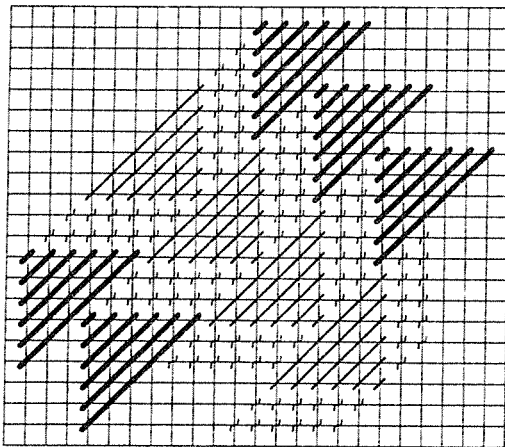
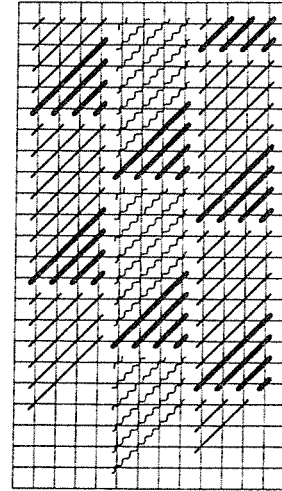
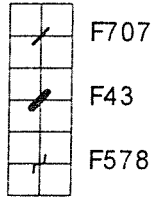


Susan Portra's "SALLY'S CHRISTMAS LIGHTS" for Rainbow Gallery



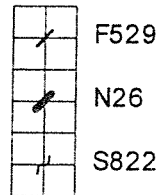
PURPLE LIGHT

Flair F578-Med. Purple
Fiesta! F707-Deep Violet
Fyre Werks F43-Purple



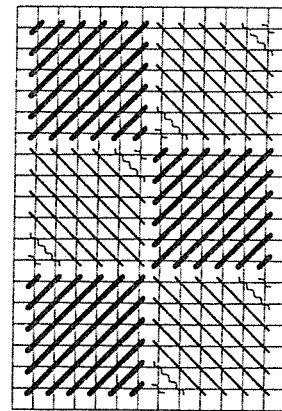
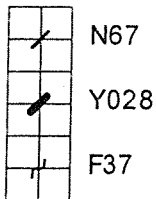
RED LIGHT (#2)

Neon Rays N26-Burgundy
Flair F529-Dk. Red
Splendor S822-Dk. Red



TEAL LIGHT

Frosty Rays Y028-Dk. Aqua
Neon Rays N67-Dk. Teal
Fyre Werks F37-Aqua

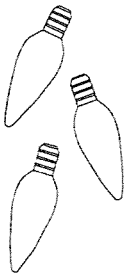


Photocopying of this design is invited.

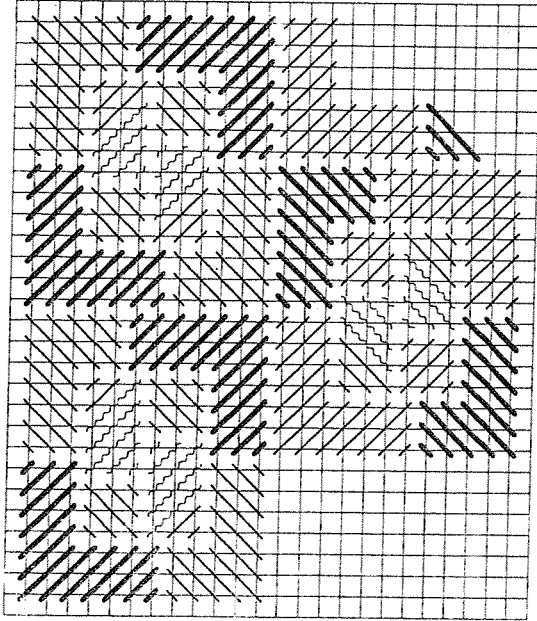
Rainbow Gallery

7412 Fulton Ave., #5, North Hollywood, CA 91605

Production by Lightworks

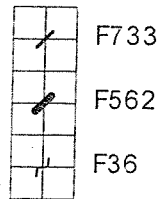


Susan Portra's "SALLY'S CHRISTMAS LIGHTS" for Rainbow Gallery



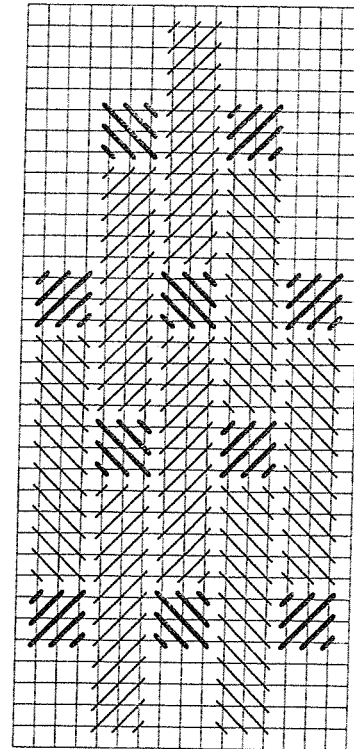
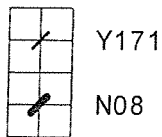
BLUE LIGHT (#1)

Fiesta! F733-Blue
Flair F562-Dark Blue
Fyre Werks F36-Royal Blue



LAVENDER LIGHT

Frosty Rays Y171-Md. Periwinkle Pearl
Neon Rays-Amethyst



Photocopying of this design is invited.

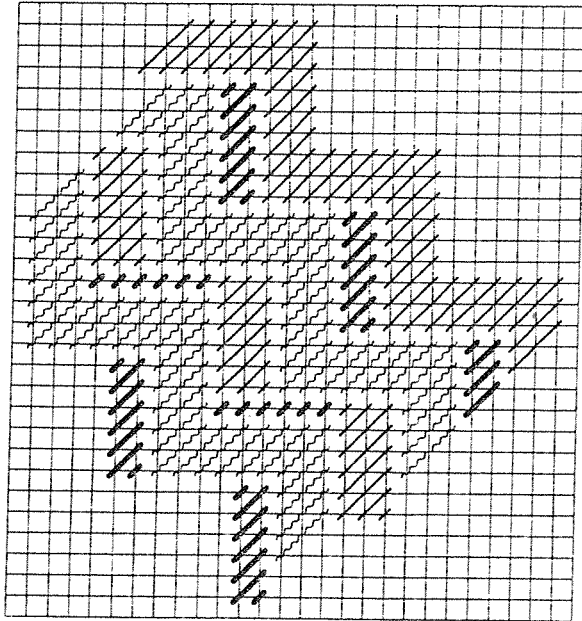
Rainbow Gallery

7412 Fulton Ave., #5, North Hollywood, CA 91605

Production by Lightworks

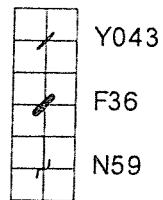


Susan Portra's "SALLY'S CHRISTMAS LIGHTS" for Rainbow Gallery



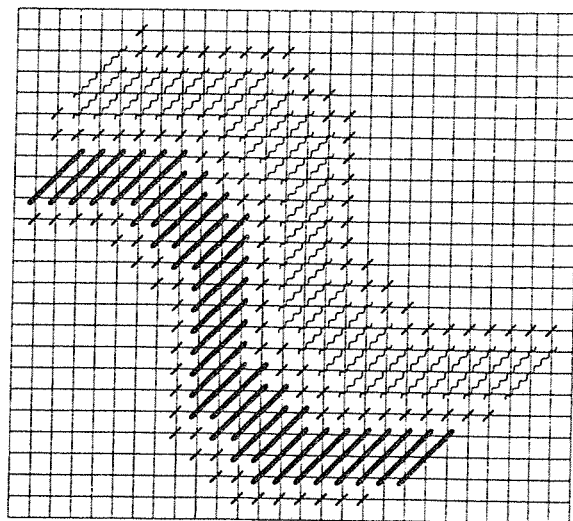
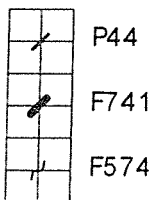
BLUE LIGHT (#2)

Frosty Rays Y043-Very Dk. Blue
Neon Rays N59- Royal
Fyre Werks F36-Royal Blue



ORANGE LIGHT

Flair F574-Orange
Fiesta! F741-Deep Orange
Pebbly Perle P44-Persimmon

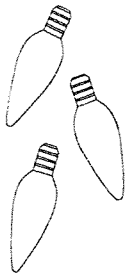


Photocopying of this design is invited.

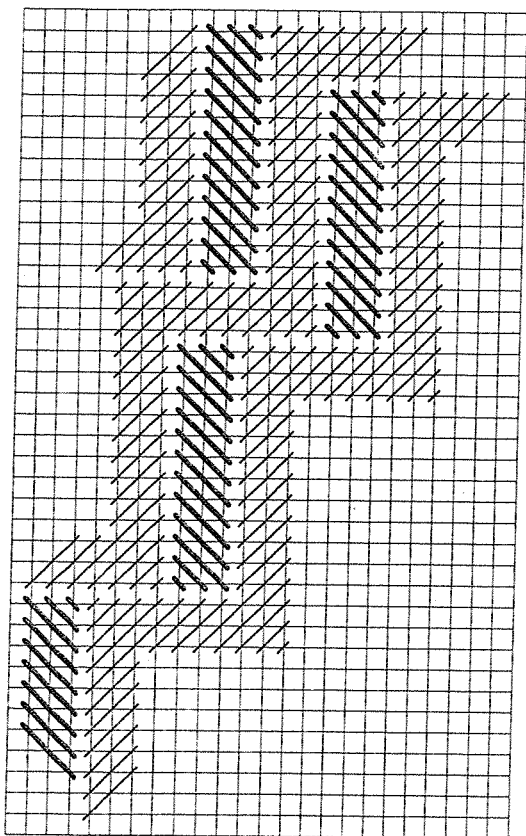
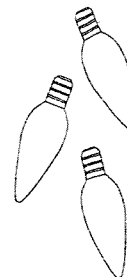
Rainbow Gallery

7412 Fulton Ave., #5, North Hollywood, CA 91605

Production by Lightworks

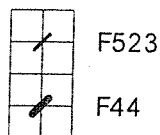


Susan Portra's "SALLY'S CHRISTMAS LIGHTS" for Rainbow Gallery



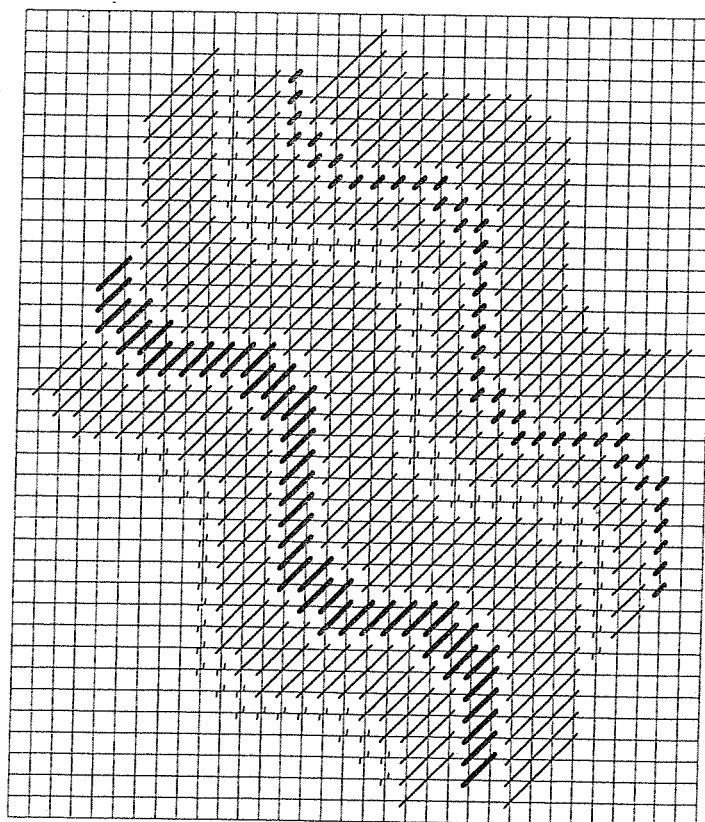
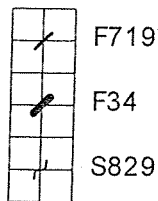
PINK LIGHT

Fyre Werks F44-Rose Violet
Flair F523-Fuchsia



GREEN LIGHT (#1)

Fyre Werks F34-Green
Fiesta! F719-Xmas Green
Splendor F829-Christmas Green



Photocopying of this design is invited.

Rainbow Gallery

7412 Fulton Ave., #5, North Hollywood, CA 91605

Production by Lightworks

Susan Portra's
"SALLY'S CHRISTMAS LIGHTS"
for Rainbow Gallery

Here, for your enjoyment, are thirteen charted decorative stitches, the shape of a Christmas light and yarn suggestions. These may be stitched on 24, 22, 20, 18, 16, 14 or 13 count canvas. Keep in mind the larger the canvas mesh the more intricate detail is lost.

Cut canvas 6 x 7 inches with the 7 being the height (selvage to the left or right). Tack or staple firmly on the top side of stretcher bars.

Use one strand in your selected color to outline the light bulb or mark with a Zig textile or Nepo marker from the chart on the first page. When executing the decorative stitches, work over outline. Choose yarns appropriate for your canvas mesh. Also stitch with a needle right for the mesh you are working on: #28-26 tapestry needle for congress cloth, #24 for 18 mesh, #22 for 16, 14 and 13.

Fibers might include cotton, silk, rayon, nylon and metallic. Fyre Werks lays beautifully on 16 mesh. I would not recommend using flower thread or wools as these yarns have little to no shine. Overdyes will also complement these lights as long as your second yarn is the same color as the major color of the overdye. Use two or three colors in the same color family but different fibers to add interest to each light. I selected gold or silver Fyre Werks to work the base on each light, then matched cording and ribbon for the finishing.

The finishing for each light should be a lightly padded flat ornament with a twisted cord around each light. Add a 15-20 inch ribbon to the top so it can be tied in a bow and attached to a tree, garland, wreath, or extension cord. Curl the ends of the wired ribbon around a pencil for a beautifully finished ornament. These lights are easy "take along projects" to keep you stitching throughout the year.

COLOR SELECTIONS FOR MODELS

(These were done on 16 count mono canvas.)

The yarns for the lights require a card each with the exception of the Frosty Rays (2 cards). Each card of gold or silver Fyre Werks will stitch the base for three lights.

When preparing these yarns for stitching, follow these simple hints to make stitching easier.

FLAIR- Cut both ends on a severe diagonal to prevent raveling.

FROSTY RAYS – Place a knot in the end you cut, stretch the two ends toward the lead end, cut even and thread. Only bend over the needle by two inches.

NEON RAYS – Once the yarn has been cut, knotted and threaded, wrap around index finger on both hands and with a swift pull "pop" the yarn to relax the creases. Lay in with a trolley needle for best results.

FYRE WERKS – A trolley needle is a must.

GRANDEUR – Double when stitch on 16 and larger mesh.

SPLENDOR – Use 6 ply for French Knots. Work this stitch last.

FIESTA! – Cut 40 inches long, wet, ply, thread and hang to dry. Once dry, place knot in doubled length (2 ply doubled for 16 mono). Start with an away knot off to the side, stitch one or two bargello tucks in the area you will be working over, comb and lay in with a trolley needle and never let the yarn relax –keep taut top and bottom side of canvas.